

# GRANT COUNTY CERTIFIED LAND CORNER

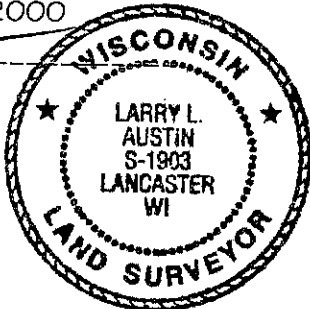
CORNER NUMBER 74

**CERTIFICATE:**

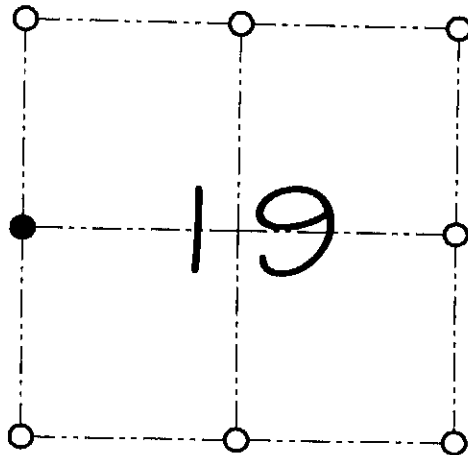
I, Larry L. Austin, do hereby certify that on the 19th day of June, 2000, I found no evidence of the West 1/4 corner of Section 19, Town 8 North, Range 2 West, of the 4th Principal Meridian, and I re-established said corner according to the Wisconsin statutes as shown and described hereon.

Dated this 23rd day of June, 2000

*Larry L. Austin*  
Larry L. Austin S-1903



SEAL



● = CORNER LOCATION

WEST 1/4 CORNER OF  
SECTION 19, T 8 N R 2 W  
TOWN OF WATTERSTOWN

**HISTORY OF ORIGINAL CORNER ESTABLISHMENT:**

Corner was never originally set.  
No other record of the corner was found.

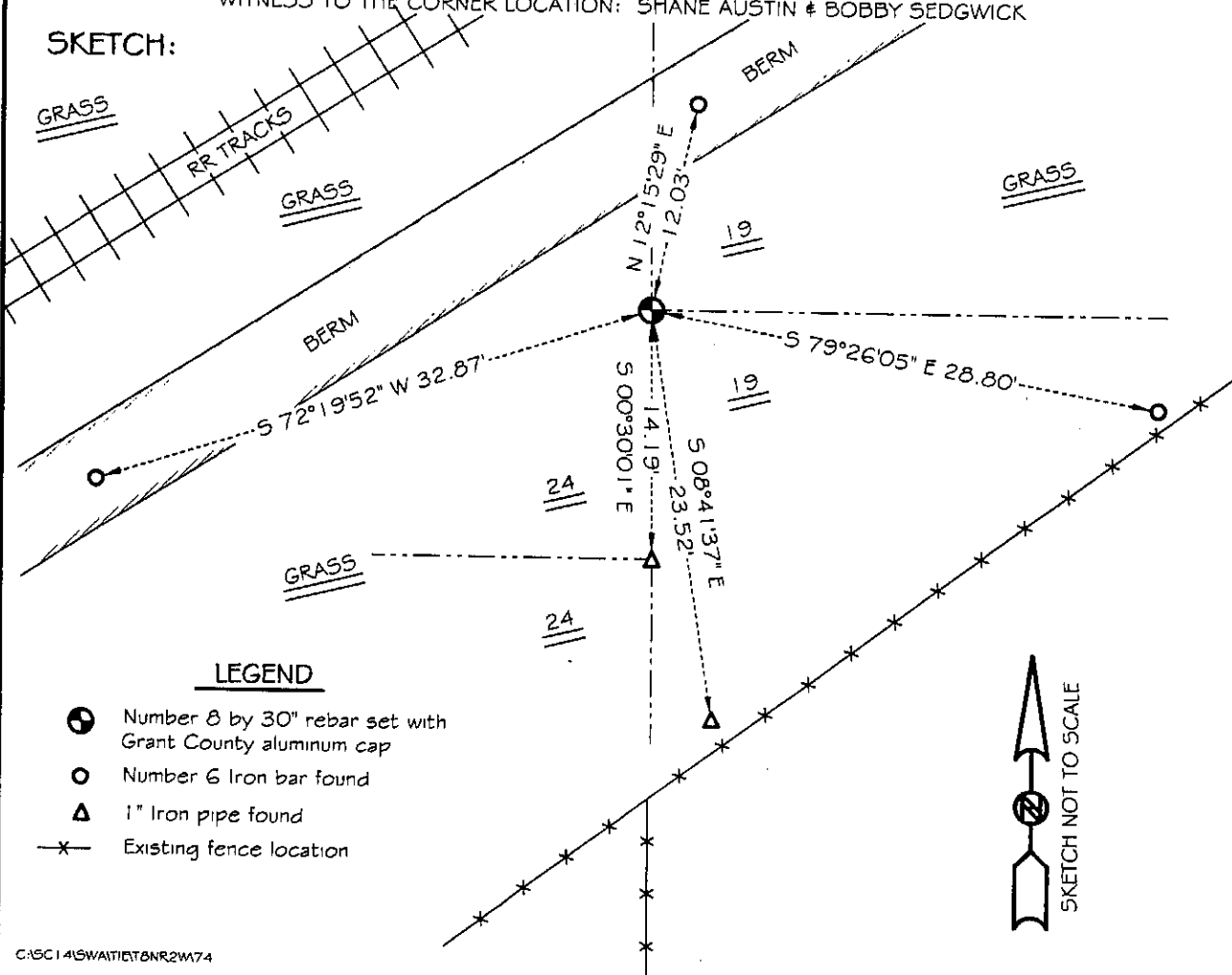
**DESCRIPTION OF CORNER EVIDENCE FOUND:**

I found the existing East 1/4 of Section 24 and set the West 1/4 corner of Section 19 at the proportioned offset and online between the Northeast corner of Section 24 and the East 1/4 of Section 24, T8N R3W. Verified this location using EDM & GPS methods.

**DESCRIPTION OF CORNER AND WITNESS MONUMENTS, references and accessories used to perpetuate the original or re-established location of this corner**

WITNESS TO THE CORNER LOCATION: SHANE AUSTIN & BOBBY SEDGWICK

**SKETCH:**



**LEGEND**

- Number 8 by 30" rebar set with Grant County aluminum cap
- Number 6 Iron bar found
- △ 1" Iron pipe found
- x— Existing fence location

