

U. S. PUBLIC LAND SURVEY MONUMENT TIE SHEET - GRANT COUNTY WISCONSIN.

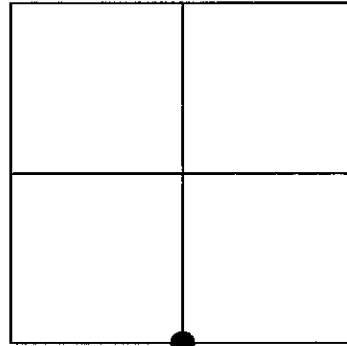
Section # 36, Town 8 North, Range 3 West, Town of
Boscobel.

Certificate

I, Craig E Hardy, do hereby certify that the corner location on this record was determined by me and/or under my direct supervision and that this U.S. public land survey monument record is correct and complete to the best of my knowledge and belief.

Dated this 21st day of March, 2007.

Craig E Hardy
Craig E. Hardy, WI-RLS #2304



History of Corner Establishment

Original corner was set in 1832.

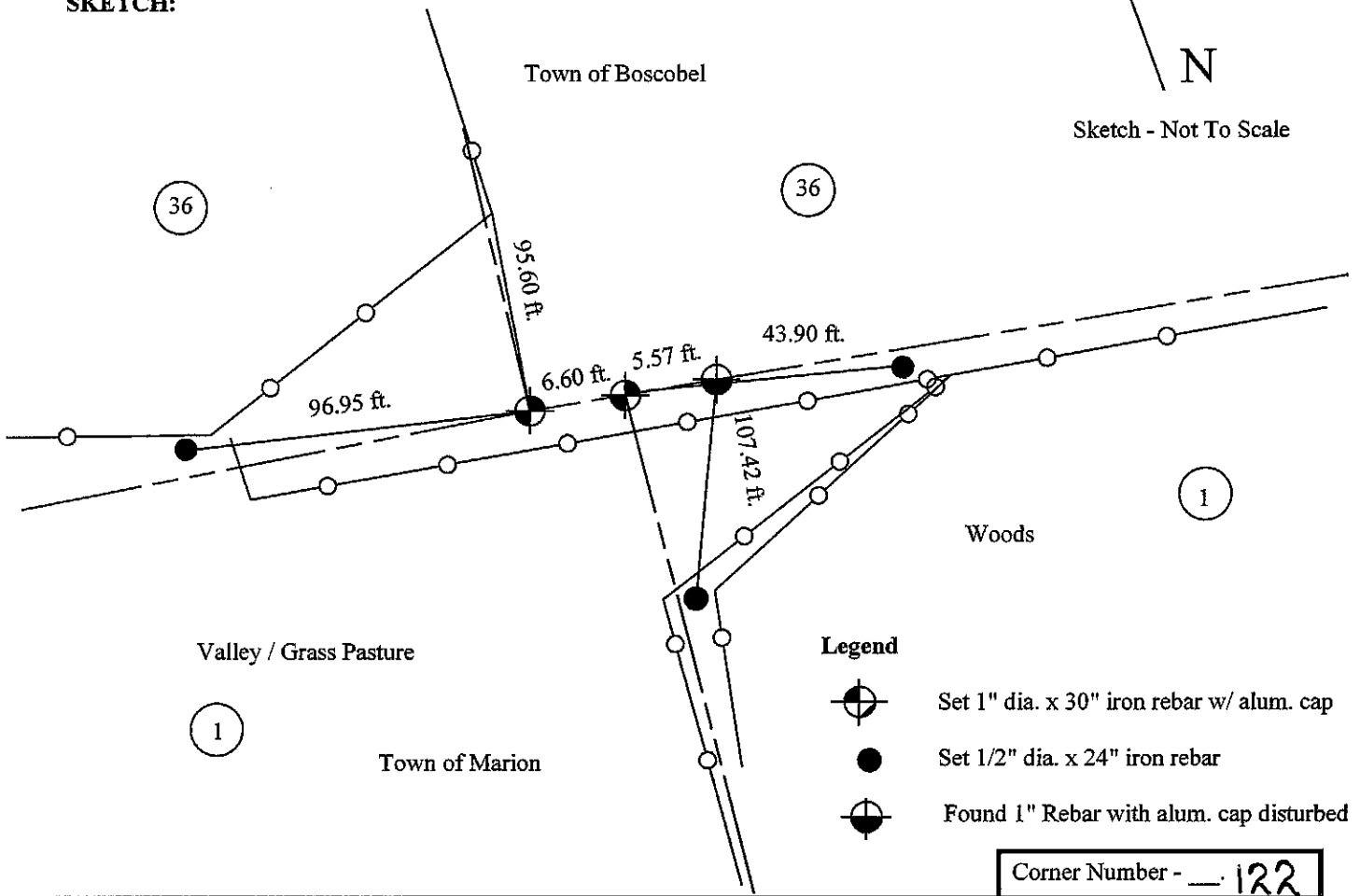
Description of Corner Evidence Found:

I found at the location of this corner an unreferenced disturbed 1" dia. rebar with a county aluminum cap monument. There is no record or tie sheet to this monument on file in the county surveyor's office or tax lister's office records. I set two new county aluminum monuments at this location as acceptance of the occupancy of the fences of sections 1 and 36.

Description of Corner and Witness Monuments, references and accessories used to perpetuate the original or re-established location of this corner.

Witnesses to corner location _____

SKETCH:



Corner Number - 122

U. S. PUBLIC LAND SURVEY MONUMENT TIE SHEET - GRANT COUNTY WISCONSIN.

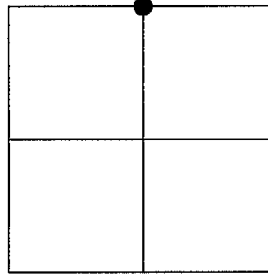
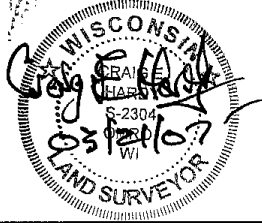
Section # 1, Town 7 North, Range 3 West, Town of Marion.

Certificate

I, Craig E Hardy, do hereby certify that the corner location on this record was determined by me and/or under my direct supervision and that this U.S. public land survey monument record is correct and complete to the best of my knowledge and belief.

Dated this 21st day of March, 2007.

Craig E Hardy
 Craig E Hardy, WI-RES #2304



History of Corner Establishment

Original corner was set in 1832.

Description of Corner Evidence Found:

I found at the location of this corner an unreferenced disturbed 1" dia. rebar with a county aluminum cap monument. There is no record or tie sheet to this monument on file in the county records. I set two new county aluminum monuments at this location as acceptance of the occupancy of sections 1 and 36 fences.

Description of Corner and Witness Monuments, references and accessories used to perpetuate the original or re-established location of this corner.

Witnesses to corner location _____

SKETCH:

