

**U.S. PUBLIC LAND SURVEY MONUMENT RECORD - GRANT COUNTY, WI**

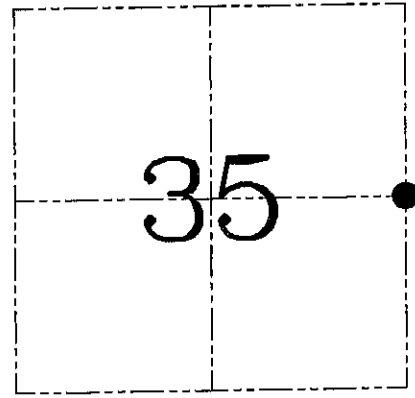
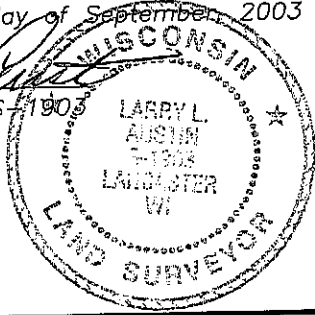
**Section 35, Town 8 North Range 3 West, Town of Boscobel**

CERTIFICATE

I, Larry L. Austin, do hereby certify that the corner location on this record was determined by me and/or under my direct supervision and that this U.S. public land survey monument record is correct and complete to the best of my knowledge and belief.

Dated this 25th day of September, 2003

*Larry L. Austin*  
Larry L. Austin S-1905



● = CORNER LOCATION

HISTORY OF CORNER ESTABLISHMENT

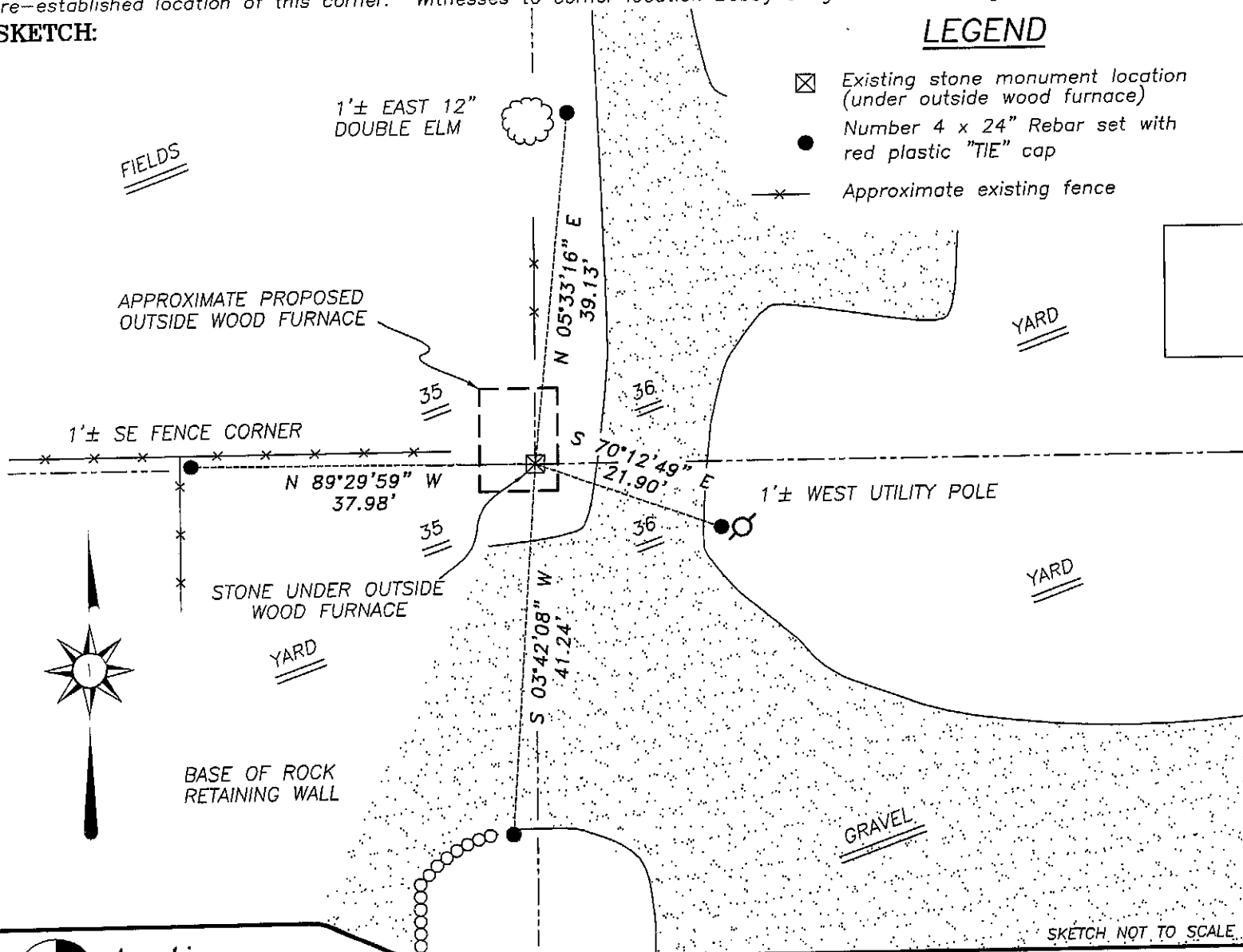
Corner was originally set in 1833 by Parke.  
In 1985 Marks found a stone at this location.

DESCRIPTION OF CORNER EVIDENCE FOUND

I set new ties to the location of the stone due to the fact that the wood furnace was going to make the stone inaccessible.

DESCRIPTION OF CORNER AND WITNESS MONUMENTS, references and accessories used to perpetuate the original or re-established location of this corner. Witnesses to corner location Bobby Sedgwick & Brad Digman & Shane Austin

**SKETCH:**



SKETCH NOT TO SCALE



**Austin Engineering LLC**

4211 HWY 81 E, LANCASTER, WI 53813  
PHONE 608-723-6363 FAX 608-723-6702

JOB NUMBER 06S031  
 FIELDBOOK: TDSR, 2209  
 G:\T8NR3W\26  
 H:\TIE\T8NR3W\119

DRAWN BY: SW AUSTIN  
 APPROVED: LL AUSTIN