

GRANT COUNTY

REC'D MAY 7 1996

Survey Monument Record

TYPE OF MONUMENT 1" IRON PIPE FND

STATE PLANE COORDINATES: N _____
E _____

ELEVATION — M.S.L. DATUM: _____

THETA ANGLE: _____

FIELD BOOK: 95-15

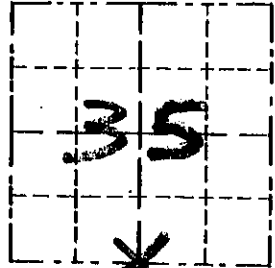
PAGE _____

CORNER NO. 124

SECTION 35

TOWN 8N

RANGE 3W



LOCATION
(Indicated by "X")

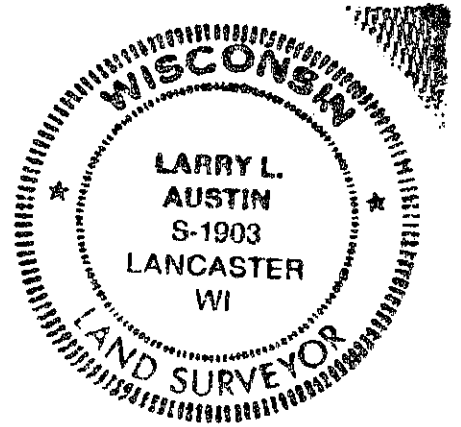
BASIS FOR MONUMENT LOCATION

(Use reverse side if necessary)

FOUND 1" IRON PIPE AND ACCEPTED IT AFTER VERIFICATION BY EDM TRAVERSE OF THE AREA. THE PIPE WAS SHOWN ON A 1987 CSM (C.S.M. #267) BY MARKS

CORNER WAS ORIGINALLY SET IN 1832 BY SIBLEY.

SEAL:



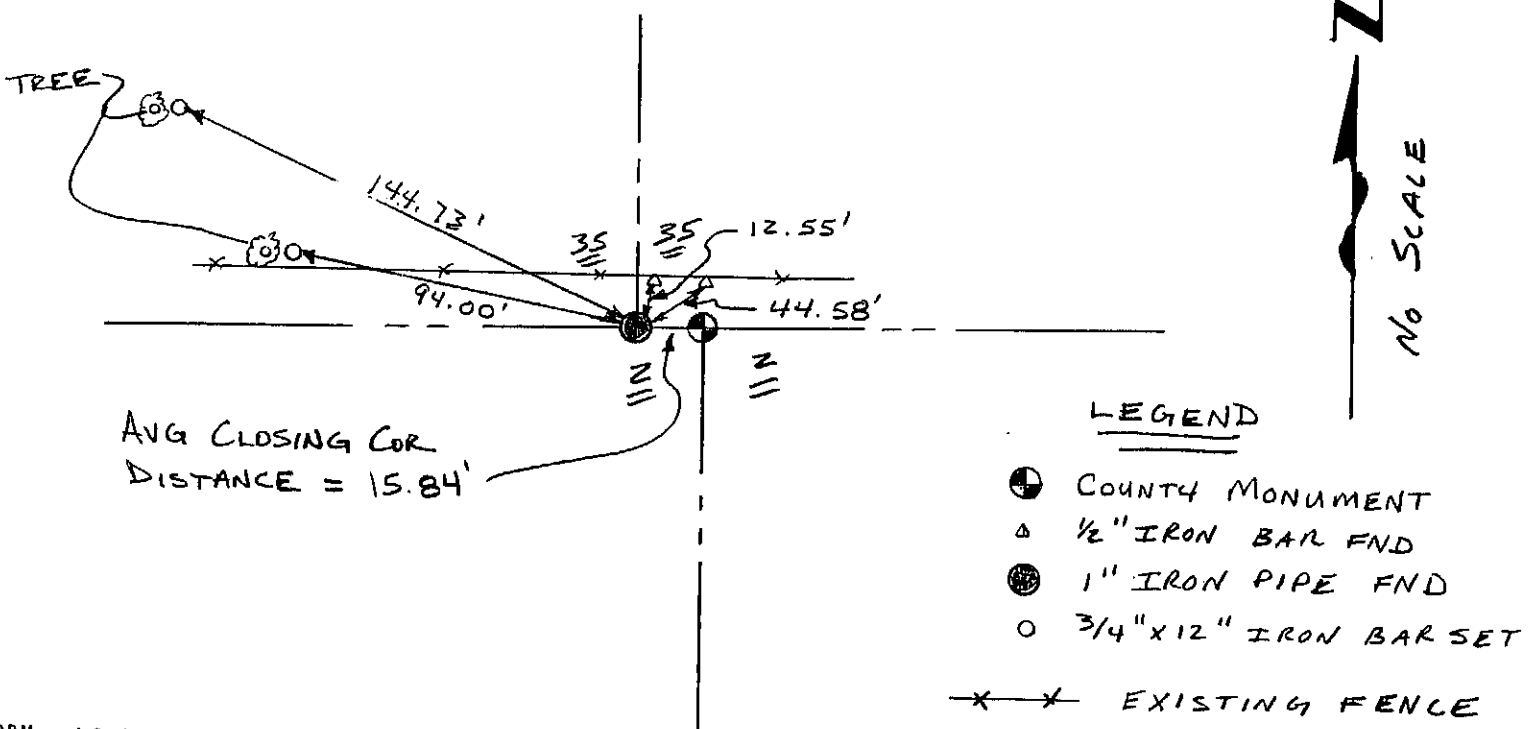
CERTIFIED CORRECT

Larry L. Austin
Registered Land Surveyor

DATE: 2/16/96

TIE SKETCH

Show at least three (3) ties and monument



AVG CLOSING COR
DISTANCE = 15.84'

LEGEND

- COUNTY MONUMENT
- △ 1/2" IRON BAR FND
- 1" IRON PIPE FND
- 3/4" x 12" IRON BAR SET
- X—X— EXISTING FENCE

GRANT COUNTY

Survey Monument Record

TYPE OF MONUMENT COUNTY MONUMENT SET

STATE PLANE COORDINATES: N _____
E _____

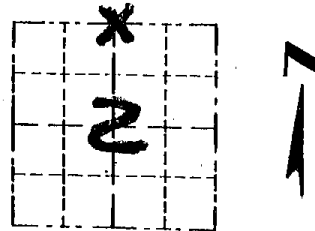
ELEVATION — M.S.L. DATUM: _____

THETA ANGLE: _____

FIELD BOOK: 95-15

PAGE _____

CORNER NO. 4
SECTION 2
TOWN 7N
RANGE 3W



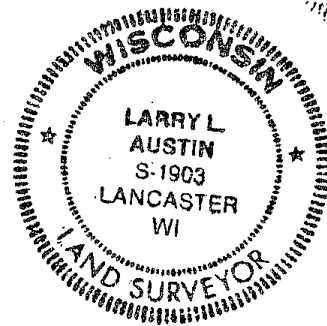
LOCATION
(Indicated by "X")

BASIS FOR MONUMENT LOCATION

(Use reverse side if necessary)

COUNTY MONUMENT SET
ON THE SOUTH LINE OF
THE SOUTHEAST 1/4 OF
SECTION 35 — T8N, R3W — AT
THE AVERAGE DISTANCE OF
THE CLOSING CORNER DISTANCES
AT THE NE COR. & NW COR.
OF SECTION 2, FROM A
1" IRON PIPE FOUND AT THE
SOUTH 1/4 COR. OF SEC 35 — T8N, R3W.

SEAL:



VERIFIED BY EDM TRAVERSE
OF THE AREA.

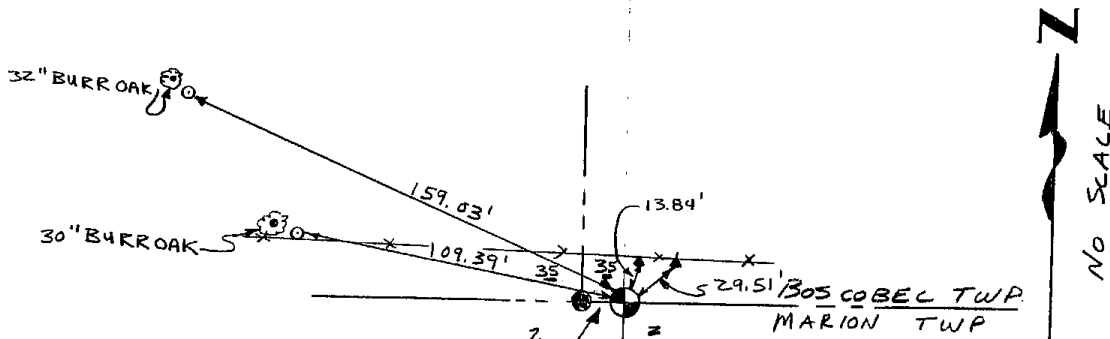
CERTIFIED CORRECT

Larry L. Austin
Registered Land Surveyor

DATE: 2/16/96

TIE SKETCH

Show at least three (3) ties and monument



AVG CLOSING COR
DISTANCE = 15.84'

LEGEND

- ⊕ COUNTY MONUMENT SET
- 1" IRON PIPE FND.
- ▲ 1/2" IRON BAR FND.
- 3/4" x 12" IRON BAR SET
- EXISTING FENCE