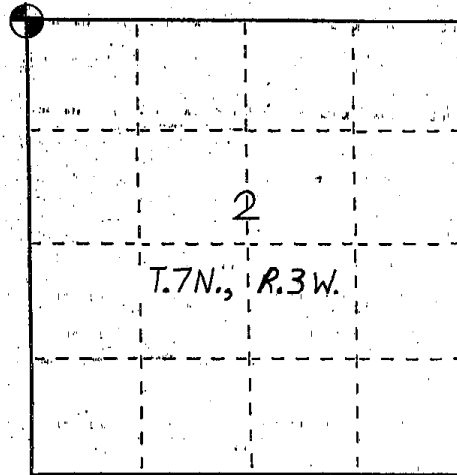


U. S. PUBLIC LAND SURVEY MONUMENT RECORD

INSTRUCTIONS: This record shall show the location of the corner and shall include all of the following nine elements (a through i).

- (a) Identify the corner by reference to the U.S. public land survey system.
- = Corner monument restored.

The Northwest Corner of Section 2, Town 7 North, Range 3 West, Marion Township, Grant County, Wisconsin.



- (b) Describe any record evidence, monument evidence, occupational evidence, testimonial evidence or any other material evidence you considered, and whether the monument was found or placed.

Grant County Aluminum Monument found and accepted as shown on Austin tie sheet. Monument and corner ties are in danger of being disturbed due to erosion of sand slope to North of corner. New ties were set farther from corner location.

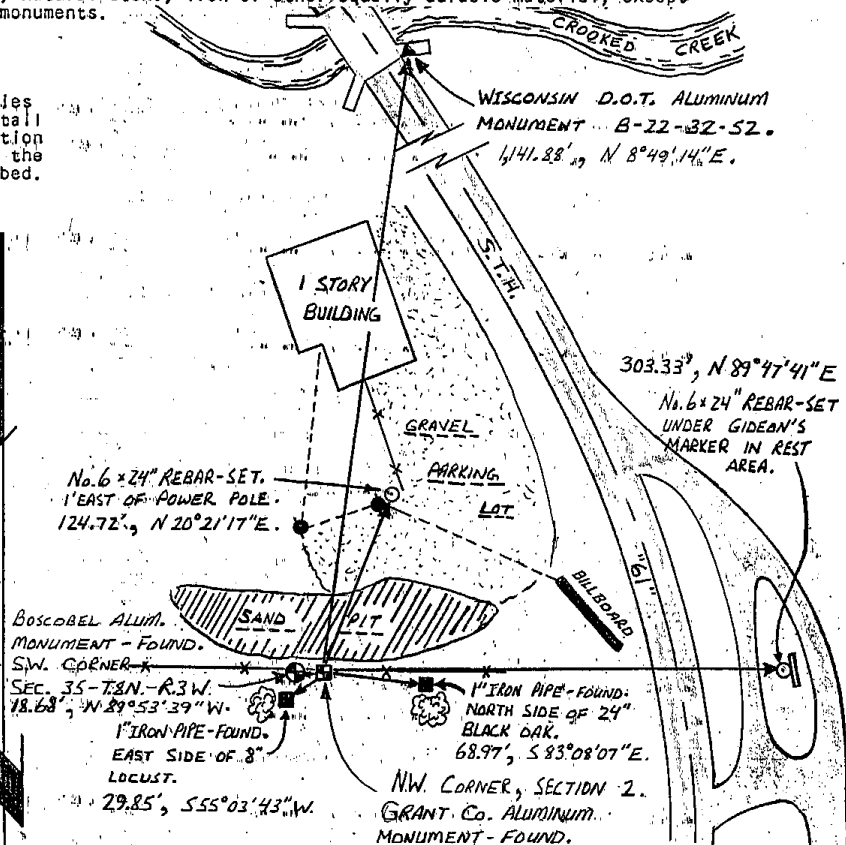
- (c) In the plan view drawing below, provide reference ties to at least 4 witness monuments, or, if the location is within a municipality, to at least 2 witness monuments. (Witness monuments shall be made of concrete, natural stone, iron or other equally durable material, ~~except wood~~.) Describe witness monuments.

- (d) Show a plan view drawing depicting the relevant monuments and reference ties which is sufficient in detail to enable accurate relocation of the corner monument if the corner monument is disturbed. Indicate north.

GRANT COUNTY COORDINATES

x = 820,181.1
y = 622,531.5

Scale: 1" = 100'



BOSCOBEL ALUM. MONUMENT - FOUND. S.W. CORNER. SEC. 35-T.8N.-R.3W. 78.68', N 89°53'39" W.
1" IRON PIPE - FOUND. EAST SIDE OF 8" LOCUST. 29.85', S55°03'43" W.

WISCONSIN D.O.T. ALUMINUM MONUMENT B-22-32-52. 141.28', N 8°49'14" E.

303.33', N 89°47'41" E No. 6 x 24" REBAR-SET UNDER GIDEAN'S MARKER IN REST AREA.

1" IRON PIPE - FOUND. NORTH SIDE OF 24" BLACK OAK. 68.97', S 83°08'07" E.

NW CORNER, SECTION 2, GRANT Co. ALUMINUM MONUMENT - FOUND.

e) Describe any material discrepancy between the location of the corner as restored or reestablished and the location of that corner as previously restored or reestablished by distance and direction. Show the discrepancy on the plan view drawing under (d), above. Show the distances between the corner as previously restored or reestablished and (1) the corner as restored or reestablished, and (2) to at least 2 of the witness monuments shown on the drawing in (d), above.

None.

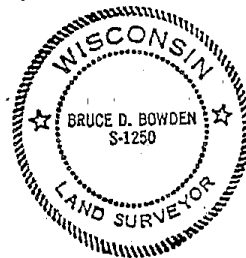
f) Was the corner restored through acceptance of (1) an obliterated evidence location, or, (2) a found perpetuated location?

a) found perpetuated location.

g&h) Was the corner reestablished through lost corner proportionate methods? If so, show the method, including the directions and distances to other public land survey corners used as evidence or used for proportioning in determining the corner location?

No.

Affix Land Surveyor Seal



i) I, BRUCE D. BOWDEN
(type or print name) certify that the corner location shown on this record was determined by me or under my direction and control and that this U.S. Public Land Survey Monument Record is correct and complete to the best of my knowledge and belief.

Signature

Date

Bruce D. Bowden
Aug 12, 1997

GRANT COUNTY

Survey Monument Record

TYPE OF MONUMENT COUNTY MONUMENT SET

STATE PLANE COORDINATES: N _____
E _____

ELEVATION - M.S.L. DATUM: _____

THETA ANGLE: _____

FIELD BOOK: 95-15

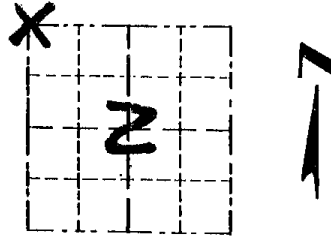
PAGE 6

CORNER NO. 5

SECTION 2

TOWN 7N

RANGE 3W



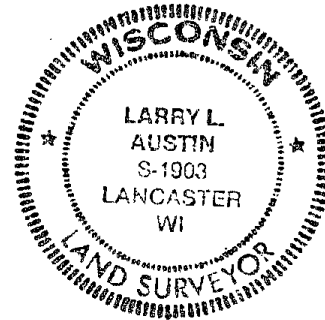
LOCATION
(Indicated by "X")

BASIS FOR MONUMENT LOCATION

(Use reverse side if necessary)

GRANT COUNTY MONUMENT SET ON THE SOUTH LINE OF THE SW 1/4, SEC. 35, T8N, R3W AND AT THE CLOSING CORNER DISTANCE OF 28 LINKS FROM THE SW COR. SEC 35-T8N, R3W.

SEAL:



VERIFIED BY EDM TRAVERSE OF THE AREA

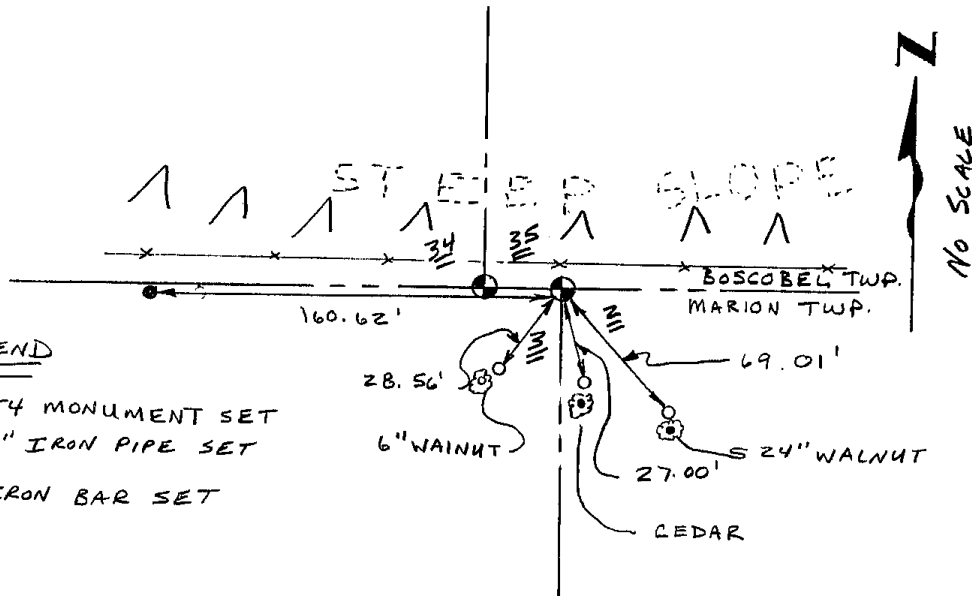
CERTIFIED CORRECT

Larry L. Austin
Registered Land Surveyor

DATE: 2/16/96

TIE SKETCH

Show at least three (3) ties and monument



LEGEND

- COUNTY MONUMENT SET
- 1"X12" IRON PIPE SET
- 3/4" IRON BAR SET

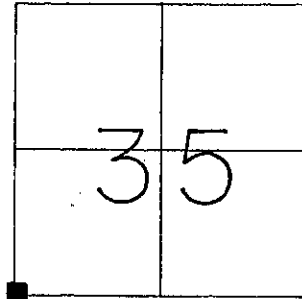
W1190
JUN 17 1990

GRANT COUNTY U.S. PUBLIC LAND SURVEY MONUMENT RECORD

TYPE OF MONUMENT: City of Boscobel Aluminum Monument
TIES ARE AS INDICATED ON SKETCH

WITNESSES TO CORNER LOCATION

Sean M. Walsh
Christopher G. Reedy
Derik L. Tracy



CORNER LOCATION
Section 35, T8N, R3W, Town of
Boscobel

BASIS FOR MONUMENT LOCATION

Corner was re-established by L. Schmitt in 1977. Corner was used again in 1987 by R. Marks in conjunction with the preparation of CSM #267.

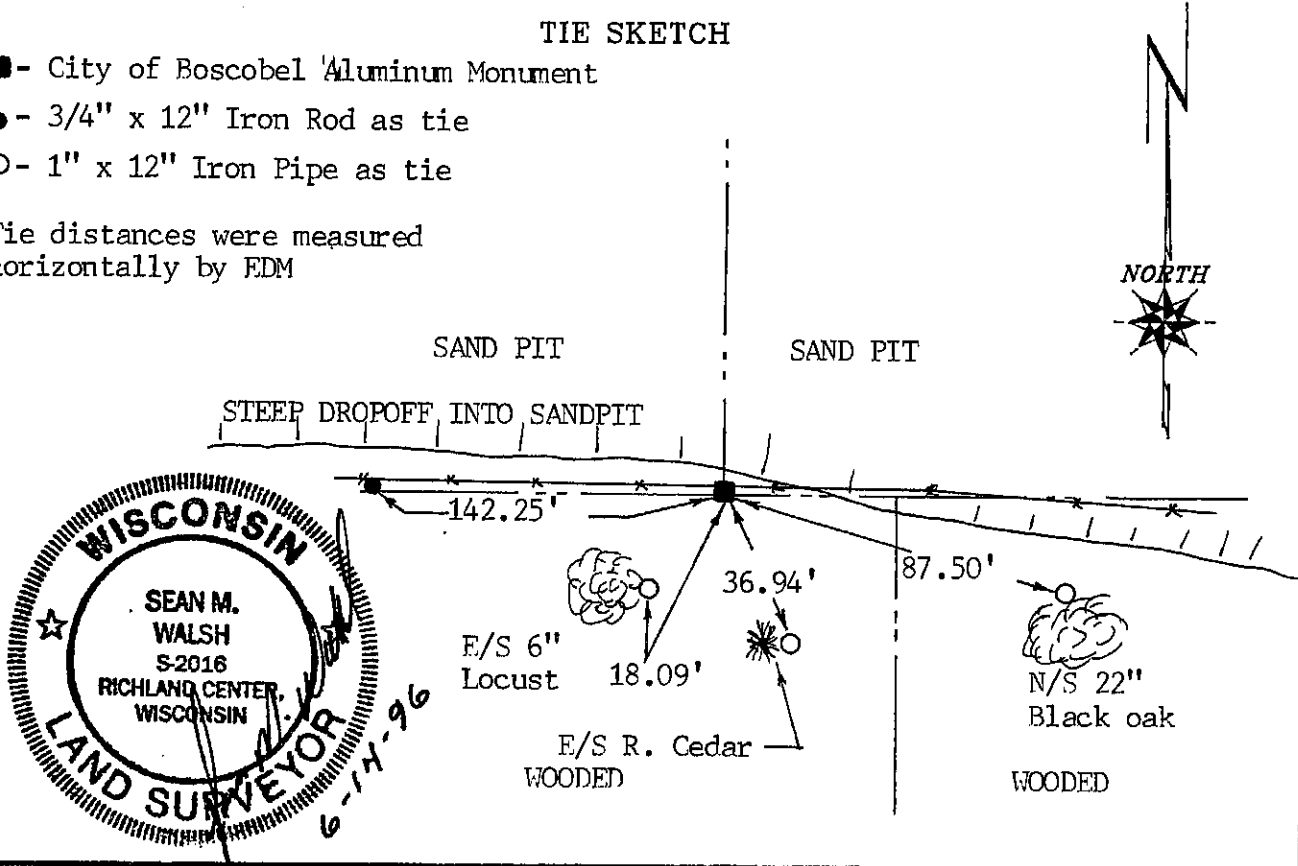
This location fits very well with the data which was recorded by L. Schmitt and the data which was recorded by R. Marks .

I have accepted and perpetuated this corner in accordance with the information contained hereon and I do hereby certify that this information is true and correct to the best of my knowledge and belief.

TIE SKETCH

- - City of Boscobel Aluminum Monument
- - 3/4" x 12" Iron Rod as tie
- - 1" x 12" Iron Pipe as tie

Tie distances were measured horizontally by EDM



WISCONSIN
SEAN M. WALSH
S-2016
RICHLAND CENTER, WISCONSIN
LAND SURVEYOR
6-14-96

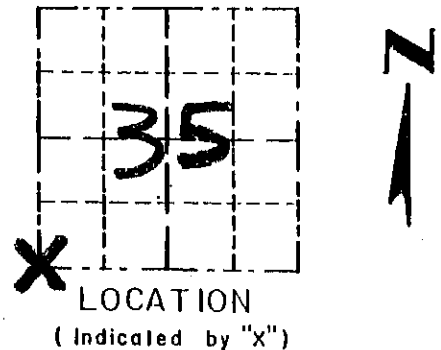
Survey Monument Record

TYPE OF MONUMENT COUNTY MONUMENT
 STATE PLANE COORDINATES: N _____
 E _____
 ELEVATION — M.S.L. DATUM: _____
 THETA ANGLE: _____
 FIELD BOOK: _____
 PAGE _____

CORNER NO. 125
 SECTION 35
 TOWN 8N
 RANGE 3W

BASIS FOR MONUMENT LOCATION

(Use reverse side if necessary)



CORNER ORIGINALLY SET IN 1832 BY SIBLEY; CORNER WAS SHOWN ON A 1987 C.S.M. (CSM#267) BY RICHARD MARKS AS A 1" IRON PIPE; I RE-ESTABLISHED THE CORNER AT THE LOCATION USED BY MARKS BY RETRACEMENT METHODS. I ACCEPTED THIS AS THE CORNER LOCATION AFTER VERIFICATION BY EDM TRAVERSE OF THE AREA.



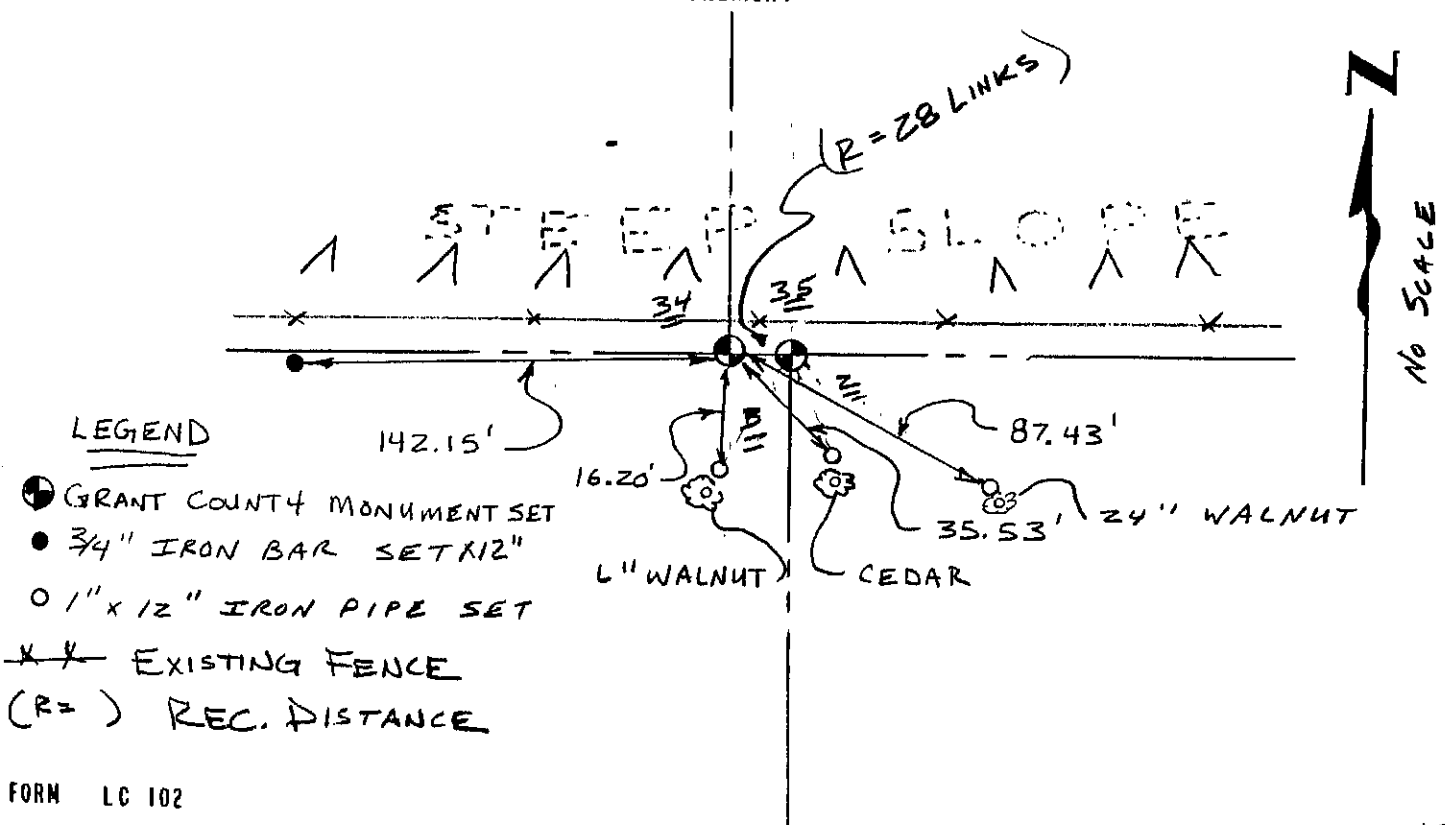
CERTIFIED CORRECT

Larry L. Austin
 Registered Land Surveyor

DATE: 2/16/96

TIE SKETCH

Show at least three (3) ties and monument



LEGEND

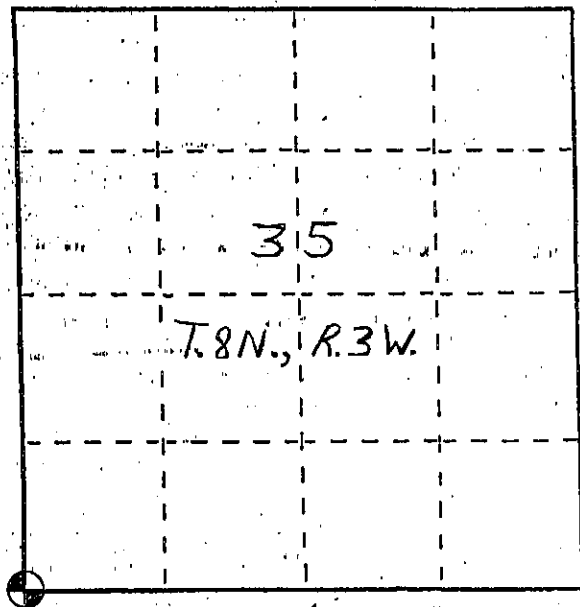
- GRANT COUNTY MONUMENT SET
- 3/4" IRON BAR SET 12"
- 1" x 12" IRON PIPE SET
- X X EXISTING FENCE
- (R=) REC. DISTANCE

U. S. PUBLIC LAND SURVEY MONUMENT RECORD

INSTRUCTIONS: This record shall show the location of the corner and shall include all of the following nine elements (a through i).

- (a) Identify the corner by reference to the U.S. public land survey system.
- = Corner monument restored.

The Southwest Corner of Section 35, Town 8 North, Range 3 West. City of Boscobel, Grant County, Wisconsin.



- (b) Describe any record evidence, monument evidence, occupational evidence, testimonial evidence or any other material evidence you considered, and whether the monument was found or placed.

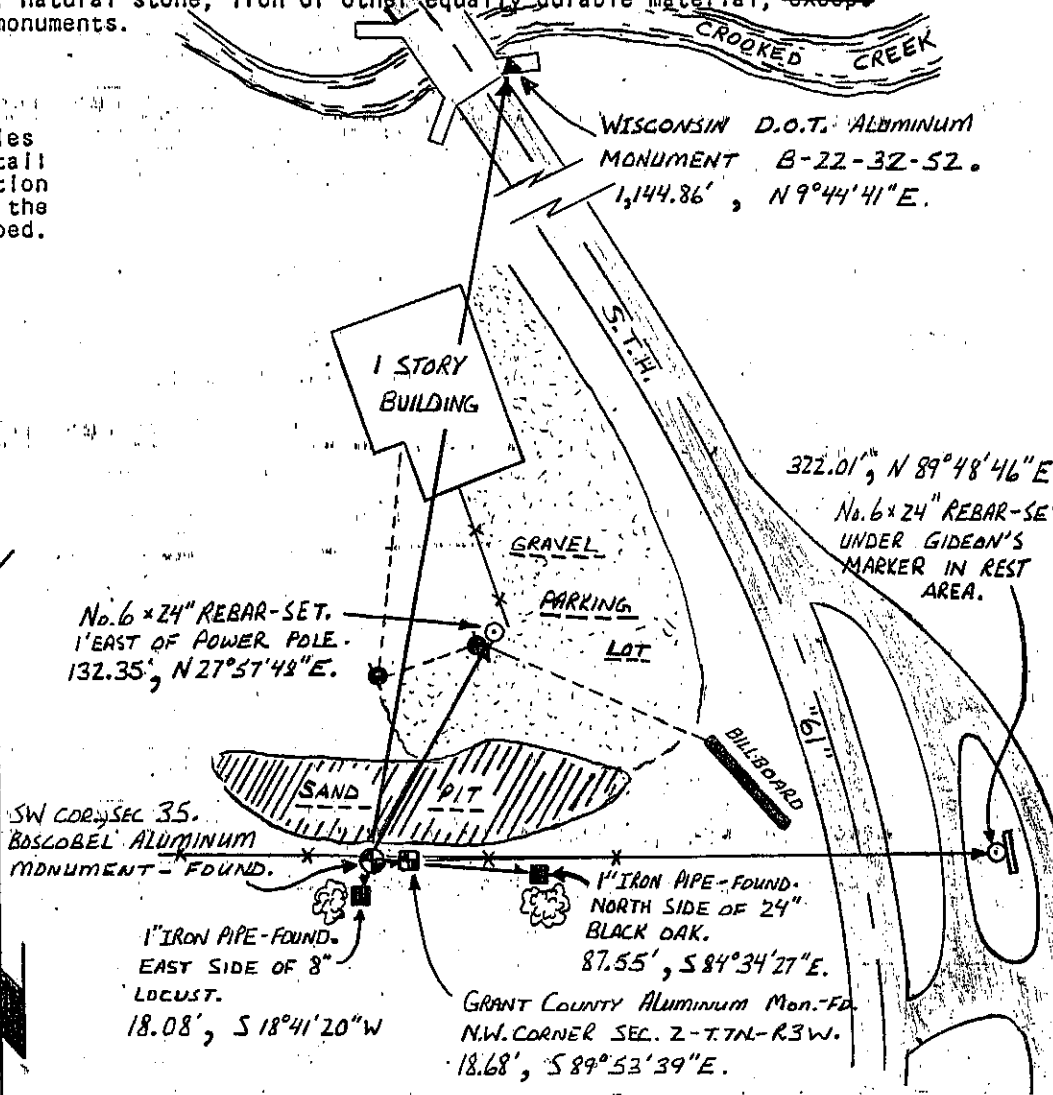
Boscobel Aluminum Monument found and accepted. Monument and corner ties set by Walsh recorded on monument record dated 6-14-96 are in danger of being disturbed due to erosion of sand slope to the North of corner. New ties were set farther from corner location.

- (c) In the plan view drawing below, provide reference ties to at least 4 witness monuments, or, if the location is within a municipality, to at least 2 witness monuments. (Witness monuments shall be made of concrete, natural stone, iron or other equally durable material, except wood.) Describe witness monuments.

- (d) Show a plan view drawing depicting the relevant monuments and reference ties which is sufficient in detail to enable accurate relocation of the corner monument if the corner monument is disturbed. Indicate north.

GRANT COUNTY COORDINATES

x = 820,162.4'
y = 622,531.5'



Scale: 1" = 100'

(e) Describe any material discrepancy between the location of the corner as restored or reestablished and the location of that corner as previously restored or reestablished by distance and direction. Show the discrepancy on the plan view drawing under (d), above. Show the distances between the corner as previously restored or reestablished and (1) the corner as restored or reestablished, and (2) to at least 2 of the witness monuments shown on the drawing in (d), above.

None.

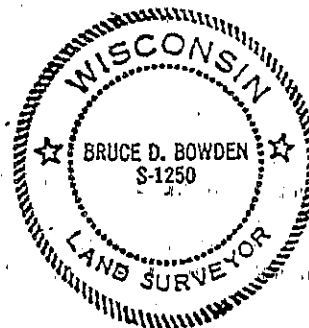
f) Was the corner restored through acceptance of (1) an obliterated evidence location, or, (2) a found perpetuated location?

No found perpetuated location.

g&h) Was the corner reestablished through lost corner proportionate methods? If so, show the method, including the directions and distances to other public land survey corners used as evidence or used for proportioning in determining the corner location?

No.

Affix Land Surveyor Seal



BRUCE D. BOWDEN

(type or print name) certify that the corner location shown on this record was determined by me or under my direction and control and that this U.S. Public Land Survey Monument Record is correct and complete to the best of my knowledge and belief.

Signature

Date

Bruce D. Bowden
Aug 12, 1997