

RECORD OF CORNER MONUMENTATION

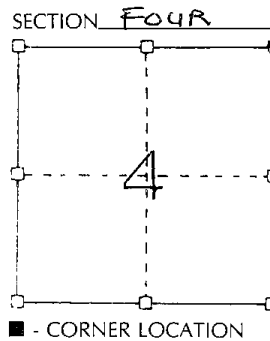
NORTHEAST CORNER SECTION 4 TOWNSHIP 7 N RANGE 3 WEST
GRANT COUNTY, WISCONSIN

STATE PLANE COORDINATES OF _____
(Y) NORTH _____ ELEVATION _____
(X) EAST _____

HORIZONTAL DATUM: WISCONSIN STATE PLANE COORDINATE SYSTEM, SOUTH ZONE

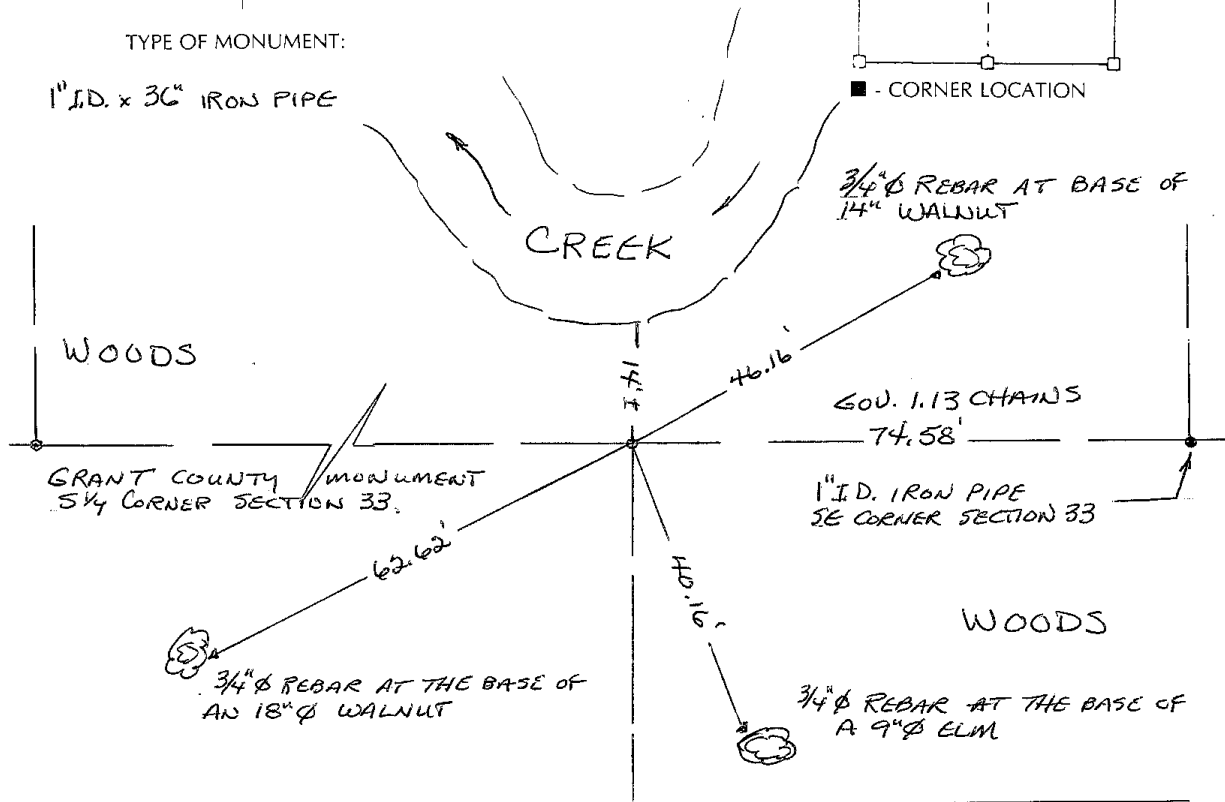


SKETCH OF CORNER REFERENCE TIES



TYPE OF MONUMENT:

1" I.D. x 36" IRON PIPE

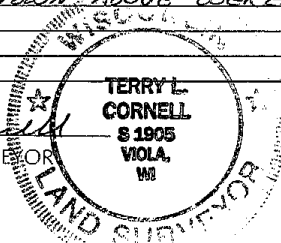


SURVEYOR'S CERTIFICATE
(STATE OF WISCONSIN)

I HEREBY CERTIFY THAT THIS MONUMENT WAS SET ACCORDING TO THE GOVERNMENT NOTES AT 1.13 CHAINS DISTANT FROM THE SOUTHEAST CORNER OF SECTION 33, ON LINE BETWEEN THE SE CORNER OF SECTION 33 AND THE SW CORNER OF SECTION 33. TIES AS SHOWN ABOVE WERE SET FOR THE PERPETUATION OF THIS CORNER.

DATED THIS 3rd DAY OF
February 2003.

Terry L. Cornell
REGISTERED LAND SURVEYOR
S-1905



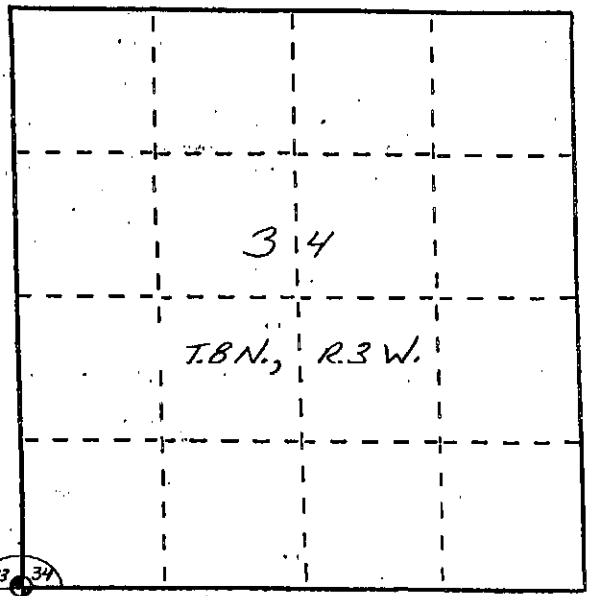
U. S. PUBLIC LAND SURVEY MONUMENT RECORD

INSTRUCTIONS: This record shall show the location of the corner and shall include all of the following nine elements (a through i).

(a) Identify the corner by reference to the U.S. public land survey system.

○ = Corner monument restored.

The Southwest Corner of Section 34,
Town 8 North, Range 3 West,
Boscobel Township, Grant
County, Wisconsin.

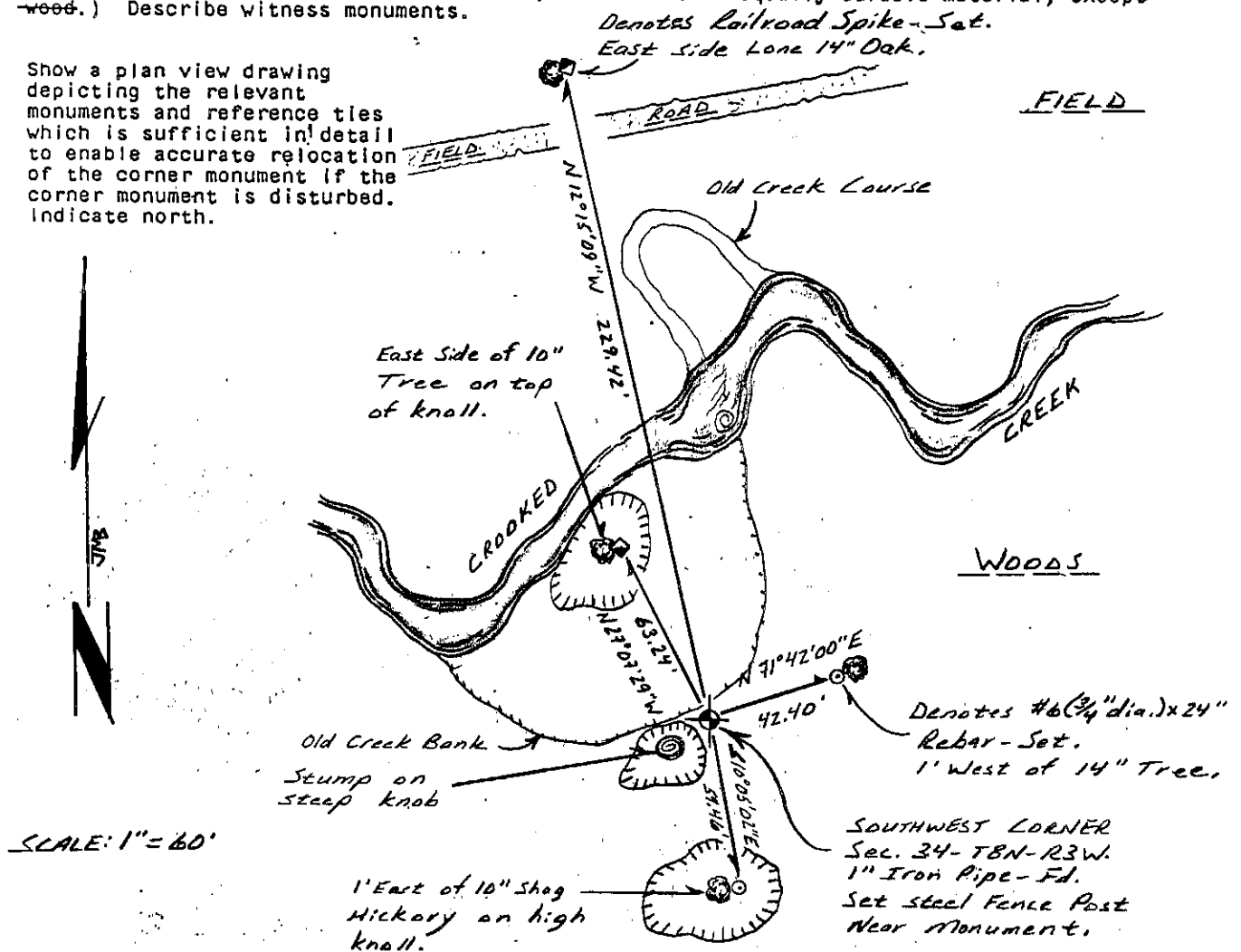


(b) Describe any record evidence, monument evidence, occupational evidence, testimonial evidence or any other material evidence you considered, and whether the monument was found or placed.

A 1" Iron Pipe was found and accepted as the corner location, said pipe being noted on various surveys in the area.

(c) In the plan view drawing below, provide reference ties to at least 4 witness monuments, or, if the location is within a municipality, to at least 2 witness monuments. (Witness monuments shall be made of concrete, natural stone, iron or other equally durable material, ~~except~~ wood.) Describe witness monuments.

(d) Show a plan view drawing depicting the relevant monuments and reference ties which is sufficient in detail to enable accurate relocation of the corner monument if the corner monument is disturbed. Indicate north.



(e) Describe any material discrepancy between the location of the corner as restored or reestablished and the location of that corner as previously restored or reestablished by distance and direction. Show the discrepancy on the plan view drawing under (d), above. Show the distances between the corner as previously restored or reestablished and (1) the corner as restored or reestablished, and (2) to at least 2 of the witness monuments shown on the drawing in (d), above.

None.

(f) Was the corner restored through acceptance of (1) an obliterated evidence location, or, (2) a found perpetuated location?

A found perpetuated location.

(g&h) Was the corner reestablished through lost corner proportionate methods? If so, show the method, including the directions and distances to other public land survey corners used as evidence or used for proportioning in determining the corner location?

No.

Affix Land Surveyor Seal



(i) I, BRUCE D. BOWDEN,

(type or print name) certify that the corner location shown on this record was determined by me or under my direction and control and that this U.S. Public Land Survey Monument Record is correct and complete to the best of my knowledge and belief.

Bruce D. Bowden
Signature

April 12, 1999
Date