

AUG 21 1990

1161

GRANT COUNTY GOVERNMENT CORNER RECORD

S W CORNER, SECTION 27, TOWNSHIP 8 NORTH, RANGE 3 EAST - WEST,
TOWN, CITY OR VILLAGE OF BOSCOBEL, RICHLAND CO.

TYPE OF MONUMENT: 1" IRON PIPE FOUND ELEVATION - M.S.L. DATUM _____

STATE PLANE COORDINATES: N _____

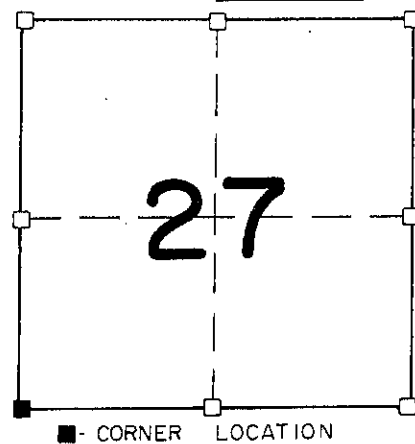
WISCONSIN SOUTH ZONE E _____

WITNESSES TO CORNER LOCATION

SEAN M. WALSH

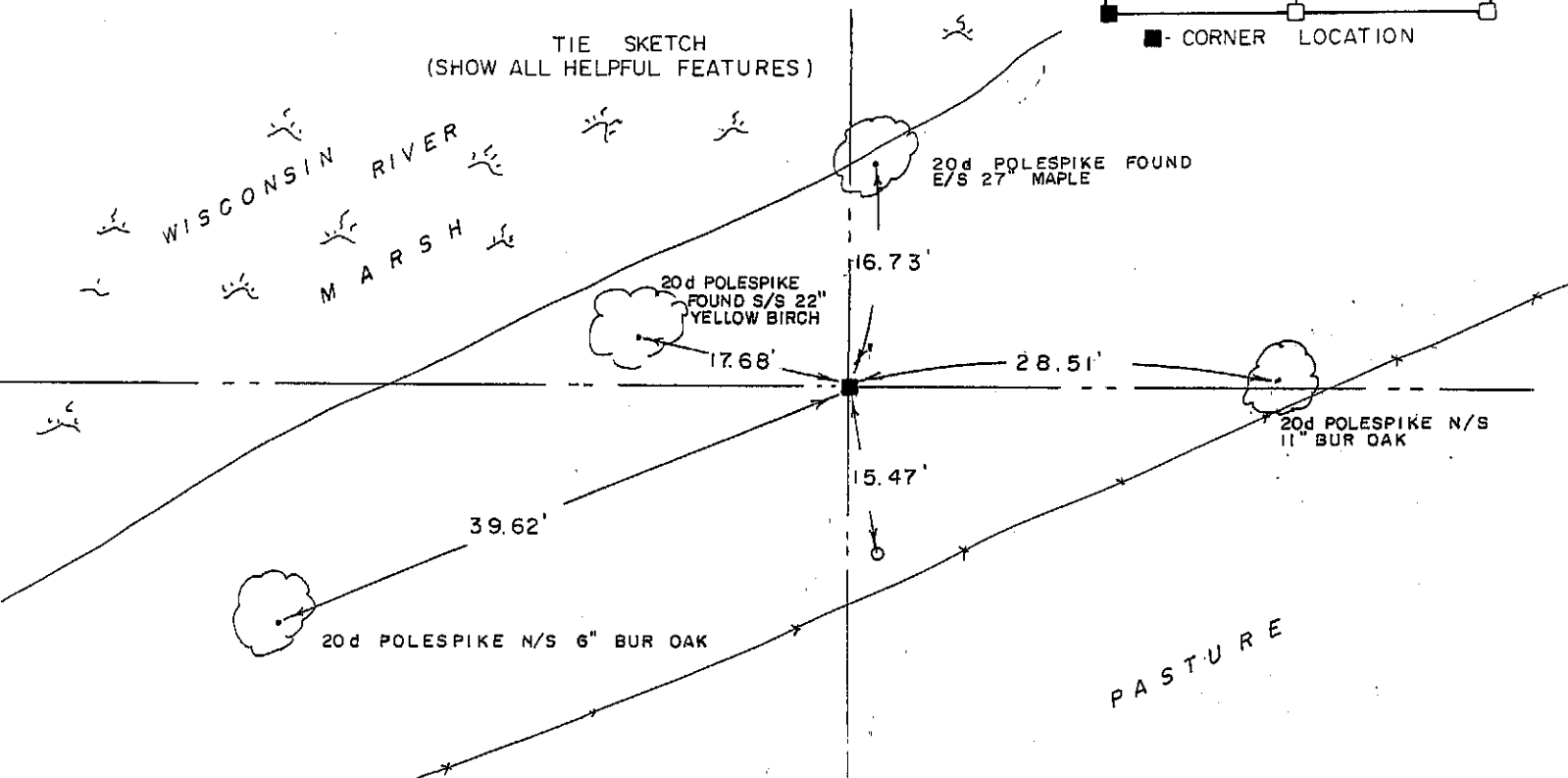
PATRICK J. DEDERICH

SECTION 27, T 8 N, R 3 EW
TOWN OF BOSCOBEL



NORTH

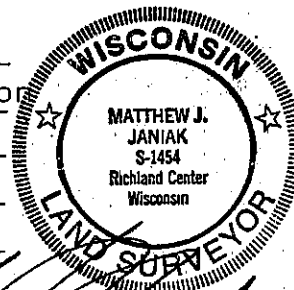
TIE SKETCH
(SHOW ALL HELPFUL FEATURES)



SURVEYOR'S CERTIFICATE
STATE OF WISCONSIN)
RICHLAND COUNTY)SS

SEAL S-1454

I, Matthew J. Janiak, DO HEREBY CERTIFY THAT I have
perpetiated the above corner and that the information
contained hereon is correct to the best of my
knowledge, belief and information.



DATED THIS 13th DAY OF August, 19 90

Matthew J. Janiak
REGISTERED LAND SURVEYOR

CORNER CODE

