

GRANT COUNTY CERTIFIED LAND CORNER

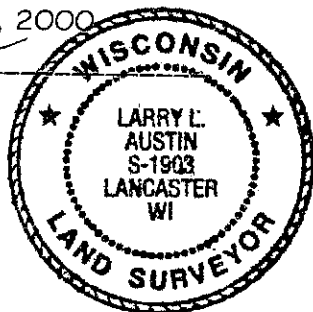
CORNER NUMBER 98A

CERTIFICATE:

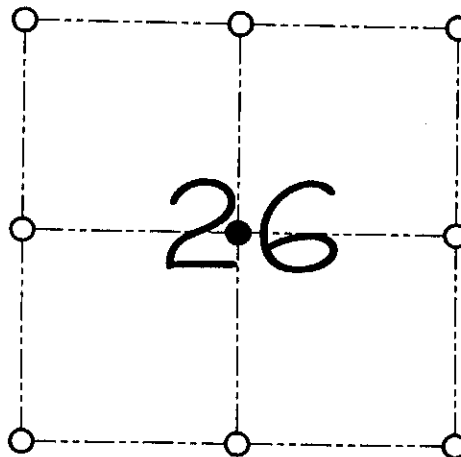
I, Larry L. Austin, do hereby certify that on the 22nd day of March, 2000, I found evidence of the Center of Section 26, Town 8 North, Range 3 West, of the 4th Principal Meridian, and I re-established said corner according to the Wisconsin statutes as shown and described hereon.

Dated this 23rd day of June, 2000

Larry L. Austin
Larry L. Austin S-1903



SEAL



● = CORNER LOCATION

CENTER OF
SECTION 26, T 8 N R 3 W
TOWN OF BOSCOBEL

HISTORY OF ORIGINAL CORNER ESTABLISHMENT:

Corner was tied to with many area surveys in recent years.

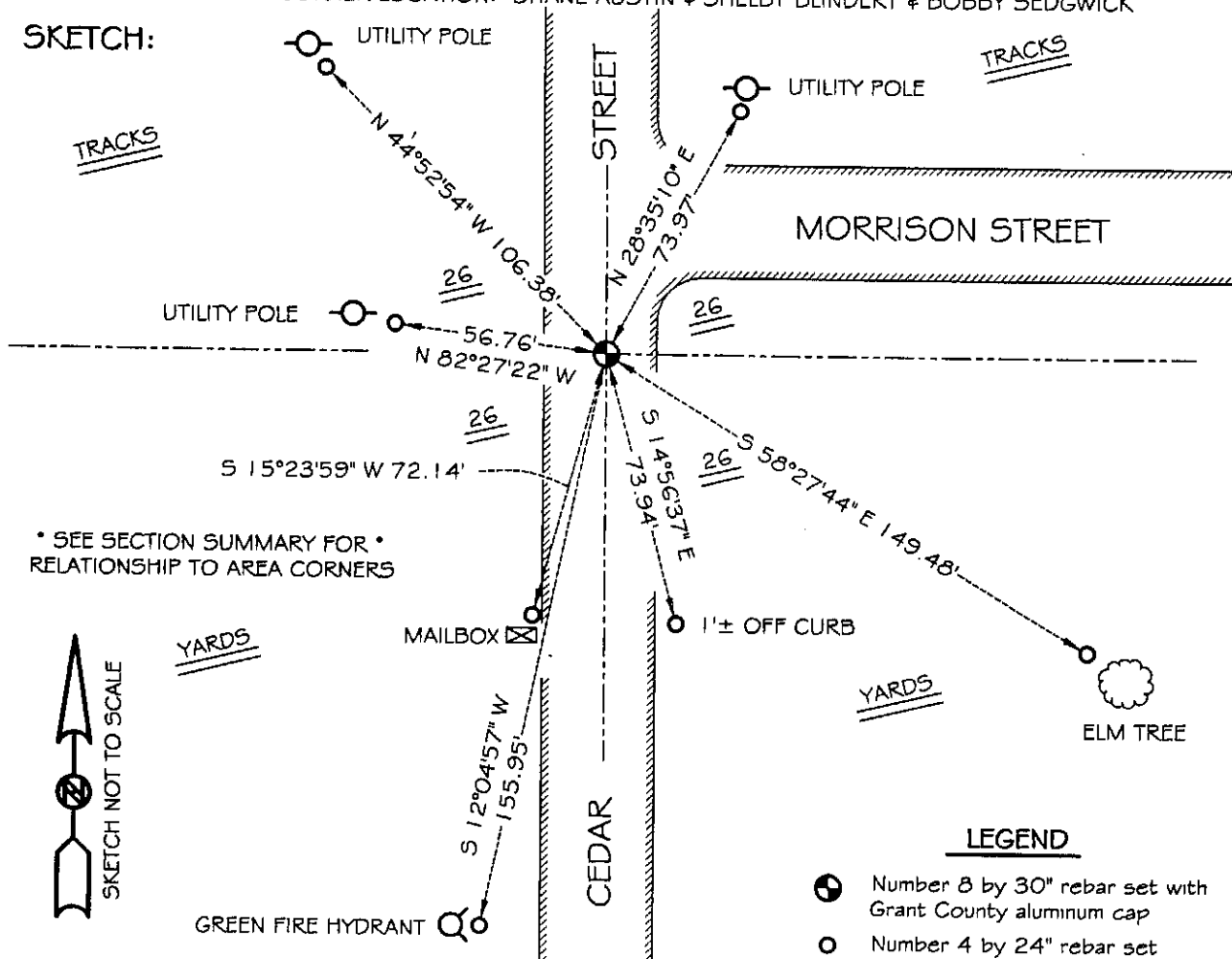
DESCRIPTION OF CORNER EVIDENCE FOUND:

I reset the corner based on the intersection of 1/4 lines.
This location was established using EDM & GPS methods.

DESCRIPTION OF CORNER AND WITNESS MONUMENTS, references and accessories used to perpetuate the original or re-established location of this corner

WITNESS TO THE CORNER LOCATION: SHANE AUSTIN & SHELBY BLINDERT & BOBBY SEDGWICK

SKETCH:



YARDS

YARDS

LEGEND

- Number 8 by 30" rebar set with Grant County aluminum cap
- Number 4 by 24" rebar set with red plastic cap