

GRANT COUNTY CERTIFIED LAND CORNER

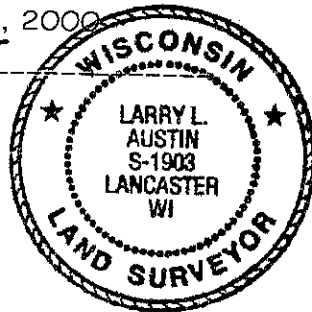
CORNER NUMBER 104

CERTIFICATE:

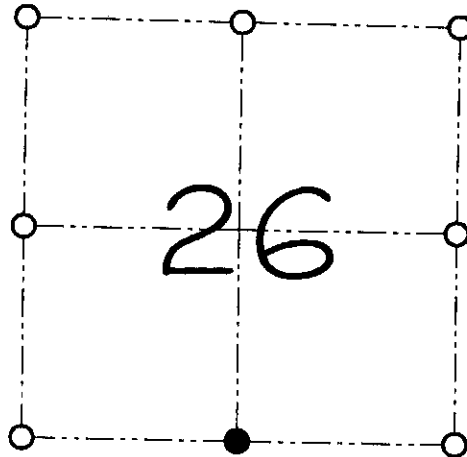
I, Larry L. Austin, do hereby certify that on the 22nd day of March, 2000, I found evidence of the South 1/4 corner of Section 26, Town 8 North, Range 3 West, of the 4th Principal Meridian, and I re-established said corner according to the Wisconsin statutes as shown and described hereon.

Dated this 23rd day of June, 2000

Larry L. Austin
Larry L. Austin S-1903



SEAL



● = CORNER LOCATION

SOUTH 1/4 CORNER OF
SECTION 26, T 8 N R 3 W
TOWN OF BOSCOBEL

HISTORY OF ORIGINAL CORNER ESTABLISHMENT:

Corner was originally set in 1833 by Harvey Parke.
Many recent area surveys referred to a Number 6 rebar at this location.

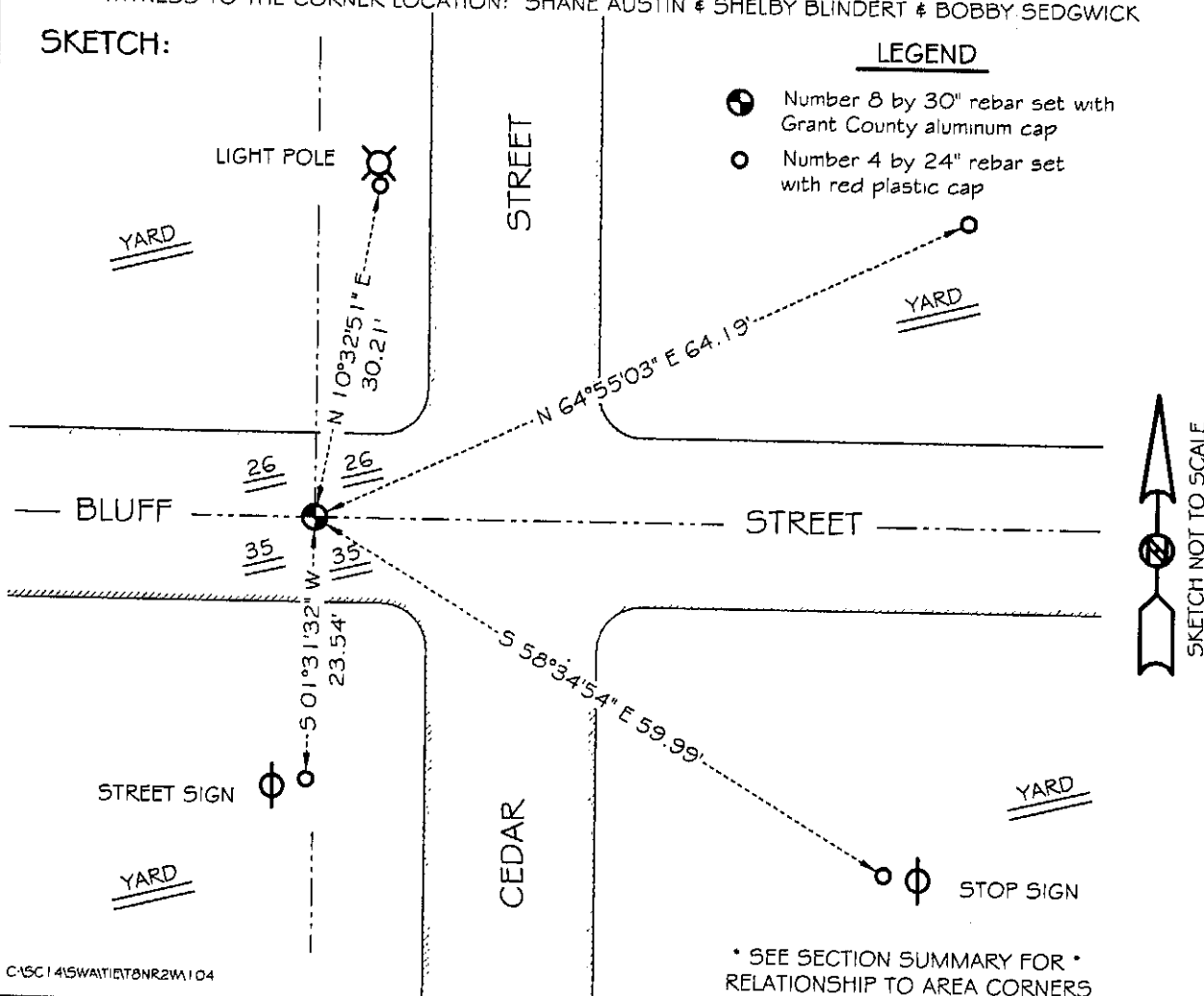
DESCRIPTION OF CORNER EVIDENCE FOUND:

I found an existing nail at this location. The nail was set to replace a #6 iron bar which was lost during road construction. I accepted the location of the nail and replaced it with a No. 8 rebar with a Grant County Aluminum Cap. This location was verified using EDM & GPS methods.

DESCRIPTION OF CORNER AND WITNESS MONUMENTS, references and accessories used to perpetuate the original or re-established location of this corner

WITNESS TO THE CORNER LOCATION: SHANE AUSTIN & SHELBY BLINDERT & BOBBY SEDGWICK

SKETCH:



* SEE SECTION SUMMARY FOR *
RELATIONSHIP TO AREA CORNERS