

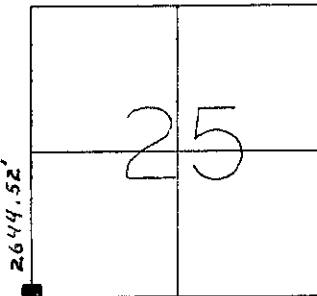
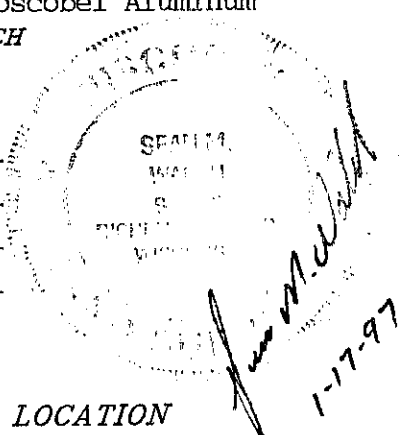
REC'D FEB 13 1997

# GRANT COUNTY U.S. PUBLIC LAND SURVEY MONUMENT RECORD

TYPE OF MONUMENT: City of Boscobel Aluminum  
TIES ARE AS INDICATED ON SKETCH

WITNESSES TO CORNER LOCATION

Sean M. Walsh  
Christopher G. Reedy



CORNER LOCATION  
Southwest Corner  
Section 25  
Town 8 North  
Range 3 West  
Boscobel Township

### BASIS FOR MONUMENT LOCATION

In a 1977 survey for the City of Boscobel, Laurence E. Schmidt set a 24" X 1" diameter Iron Pipe at this corner, along with three 1/2" Iron Rods set as ties. Surveys by Richard Marks in 1989 call for a City of Boscobel Aluminum Monument at this corner. I have accepted the location of this monument and perpetuated it as shown hereon.

This information is correct and true to the best of my knowledge, information and belief.

■ - City of Boscobel Aluminum Monument

● - 1/2" Iron Rod Tie Found

Distances in parenthesis were recorded by Schmidt in 1977.

The tie added by this survey is a 60d common pole spike in a blaze at the base of the tree as indicated. The distance to this tie was taped horizontally.

### TIE SKETCH

