

# U. S. PUBLIC LAND SURVEY MONUMENT TIE SHEET - GRANT COUNTY WISCONSIN.

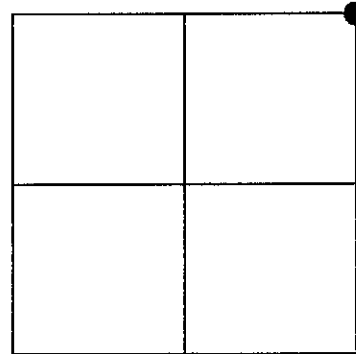
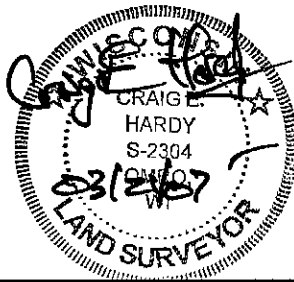
Section # 36, Town 8 North, Range 3 West, Town of Boscobel

**Certificate**

I, Craig E Hardy, do hereby certify that the corner location on this record was determined by me and/or under my direct supervision and that this U.S. public land survey monument record is correct and complete to the best of my knowledge and belief.

Dated this 21st day of March, 2007.

*Craig E Hardy*  
Craig E. Hardy, WI-RLS #2304



**History of Corner Establishment**

The original corner was a post with a stone pile set in 1833. I found a stone pile with a 24" Dia. depression in this vicinity. After excavation could find no evidence of a post or its' remnants. No other record or evidence exists. Original notes state section 31 corner intersected 35 links north of section 36 corner.

**Description of Corner Evidence Found:**

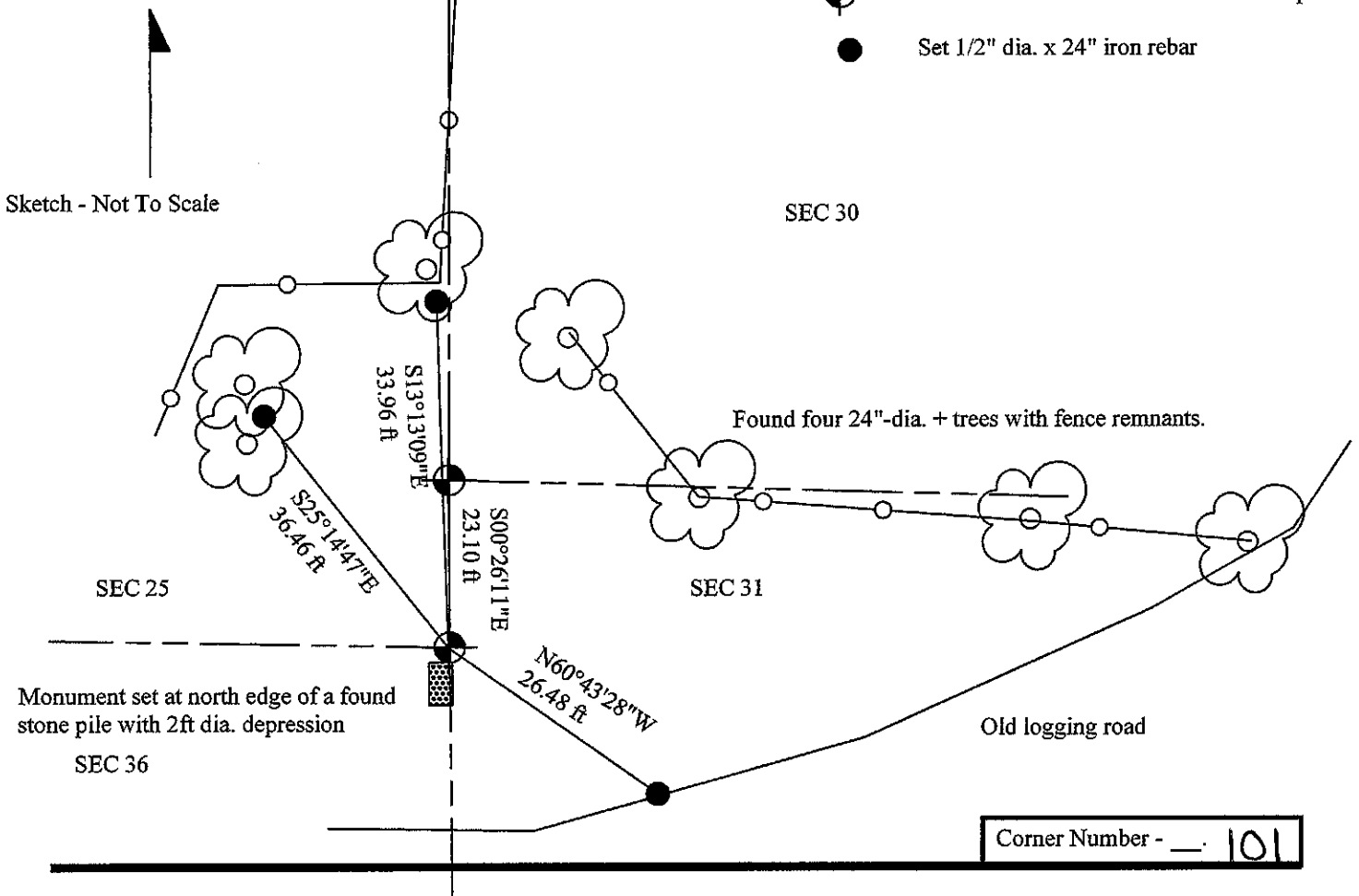
No evidence exists, beyond the found stone pile, depression, and fencelines of occupation. Both of the current owners (Charlie Baumeister and Irene McNamee) admitted the fences aren't accurate within Boscobel township at this corner location. Re-established the corner location by acceptance of the stone pile and a GPS and EDM traverse of the occupation of fences at the center of sections. The corners for section 36 and 31 (Waterstone) were set at the record dimension of 35 links from each other.

**Description of Corner and Witness Monuments, references and accessories used to perpetuate the original or re-established location of this corner.**

Witnesses to corner location \_\_\_\_\_  
SKETCH:

**Legend**

- Set 1" dia. x 30" iron rebar w/ alum. cap
- Set 1/2" dia. x 24" iron rebar



# U. S. PUBLIC LAND SURVEY MONUMENT TIE SHEET - GRANT COUNTY WISCONSIN.

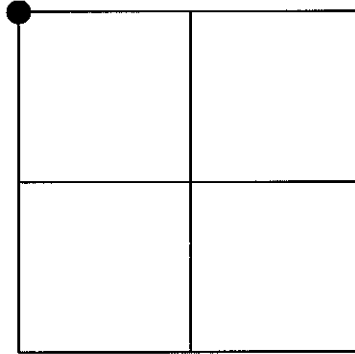
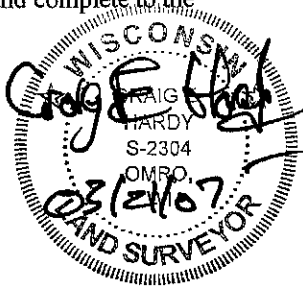
Section # 31, Town 8 North, Range 2 West, Town of  
Watterstown.

**Certificate**

I, Craig E Hardy, do hereby certify that the corner location on this record was determined by me and/or under my direct supervision and that this U.S. public land survey monument record is correct and complete to the best of my knowledge and belief.

Dated this 21st day of March, 2007.

*Craig E Hardy*  
Craig E Hardy, WI-RCS #2304



**History of Corner Establishment**

The original corner was set in 1833. I found a stone pile and 24" Dia. depression just north thereof. Could find no evidence or remains of a called for post at this location. No other record or evidence exists.

**Description of Corner Evidence Found:**

Both of the adjacent owners to this corner (Charlie Baumeister and Irene McNamee) admitted the current fences aren't accurate within the Boscobel township at this location. I re-established the corner location by acceptance of the found stone pile and sink hole for distance and direction. A GPS and EDM traverse of the area, and occupation of fences at the center of sections supports this location.

**Description of Corner and Witness Monuments, references and accessories used to perpetuate the original or re-established location of this corner.**

Witnesses to corner location \_\_\_\_\_

**SKETCH:**

**Legend**

- Set 1" dia. x 30" iron rebar w/ alum. cap
- Set 1/2" dia. x 24" iron rebar

