

U. S. PUBLIC LAND SURVEY MONUMENT RECORD

REC'D MAY 12 1997

INSTRUCTIONS:

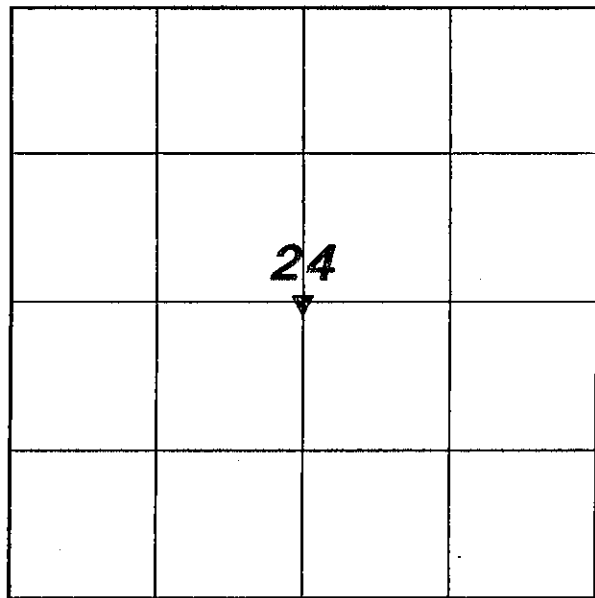
This record shall show the location of the corner and shall include all of the following nine elements (a through i).

(a) Identify the corner by reference to the U.S. public land survey system.

▼ = Corner monument restored

CENTER OF SECTION 24,
T8N, R3W, GRANT COUNTY.

Date of Survey: April 8, 1997



(b) Describe any record evidence, monument evidence, occupational evidence, testimonial evidence or any other material evidence you considered, and whether the monument was found or placed.

I established this corner at the intersection of the quarter lines. The 1" iron pipe found 0.48' west is on the E-W 1/4 line. It may have been disturbed during road construction. The location of the railroad spike set agrees with measurements to stakes shown on maps by David A. Davis (August 17, 1979) and by Lawrence E. Schmit (August 9, 1994)

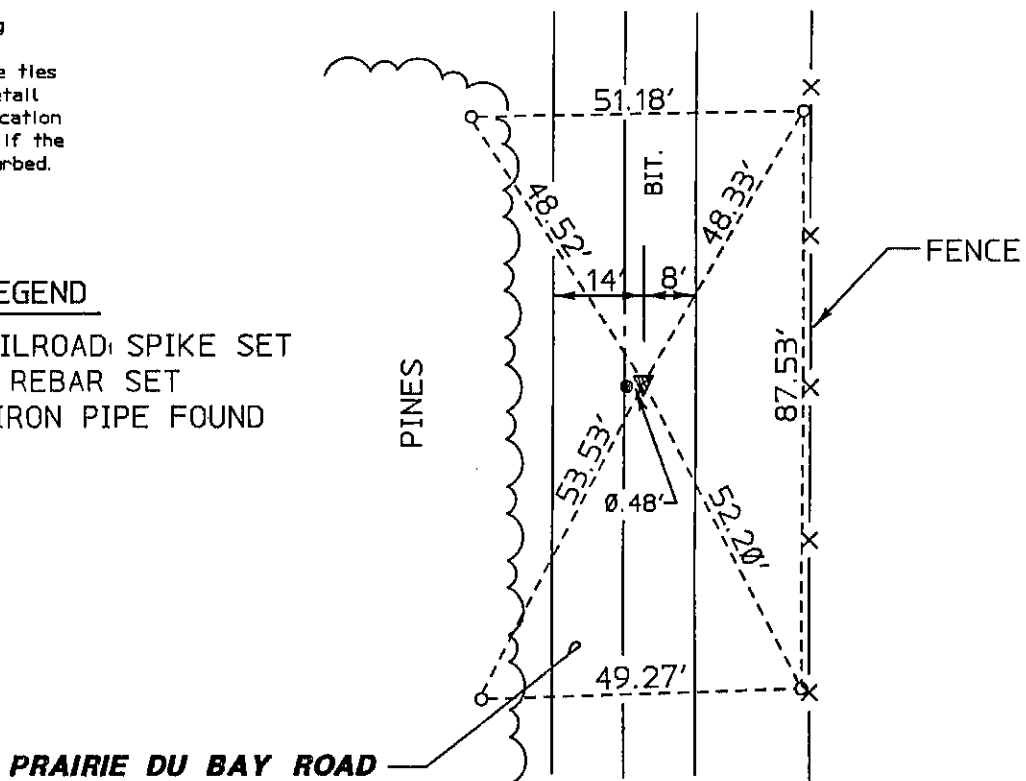
(c) In the plan view drawing below, provide reference ties to at least 4 witness monuments, or, if the location is within a municipality, to at least 2 witness monuments. (Witness monuments shall be made of concrete, natural stone, iron or other equally durable material.) Describe witness monuments.

(d) Show a plan view drawing depicting the relevant monuments and reference ties which is sufficient in detail to enable accurate relocation of the corner monument if the corner monument is disturbed. Indicate north.

LEGEND

- ▼ RAILROAD SPIKE SET
- 3/4" REBAR SET
- 1" IRON PIPE FOUND

N



material discrepancy between the location of the corner as restored or reestablished and the location of that previously restored or reestablished by distance and direction. Show the discrepancy on the plan view drawing under (d) the corner as restored or reestablished, and (2) to at least 2 of the witness monuments shown on the drawing in (d), above.

A possible discrepancy exists between this location and the 1" iron found 4.48' to the West, however the iron pipe may have been disturbed.

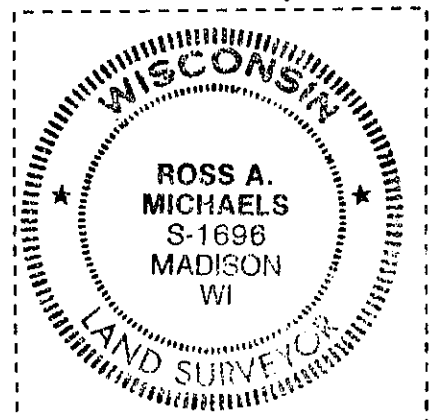
(f) Was the corner restored through acceptance of (1) an obliterated evidence location, or, (2) a found perpetuated location?

Obliterated evidence location

(g&h) Was the corner reestablished through lost corner proportionate methods? If so, show the method, including the directions and distances to other public land survey corners used as evidence or used for proportioning in determining the corner location?

Not a lost corner

Affix Land Surveyor Seal



(i) I, Ross A. Michaels

(type or print name) certify that the corner location shown on this record was determined by me or under my direction and control and that this U.S. Public Land Survey Monument Record is correct and complete to the best of my knowledge and belief.

Ross A. Michaels
Signature

April 21, 1997
Date

REC'D FEB 27 1997

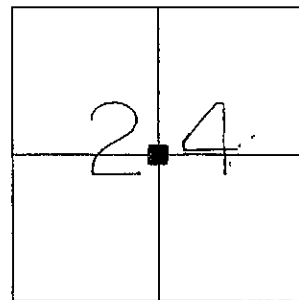
GRANT COUNTY U.S. PUBLIC LAND SURVEY MONUMENT RECORD

TYPE OF MONUMENT: 1" Iron Pipe
TIES ARE AS INDICATED ON SKETCH

WITNESSES TO CORNER LOCATION

Sean M. Walsh

 Christopher G. Reedy



CORNER LOCATION
 Center 1/4 Corner
 Section 24
 Town 8 North, Range 3 West
 Boscobel Township

BASIS FOR MONUMENT LOCATION

In 1979 David A. Davis subdivided Section 24 and set a 1" X 24" Iron Pipe at the Center 1/4 Corner.

I have accepted and perpetuated this corner as shown hereon.

This information is correct and true to the best of my knowledge and belief.

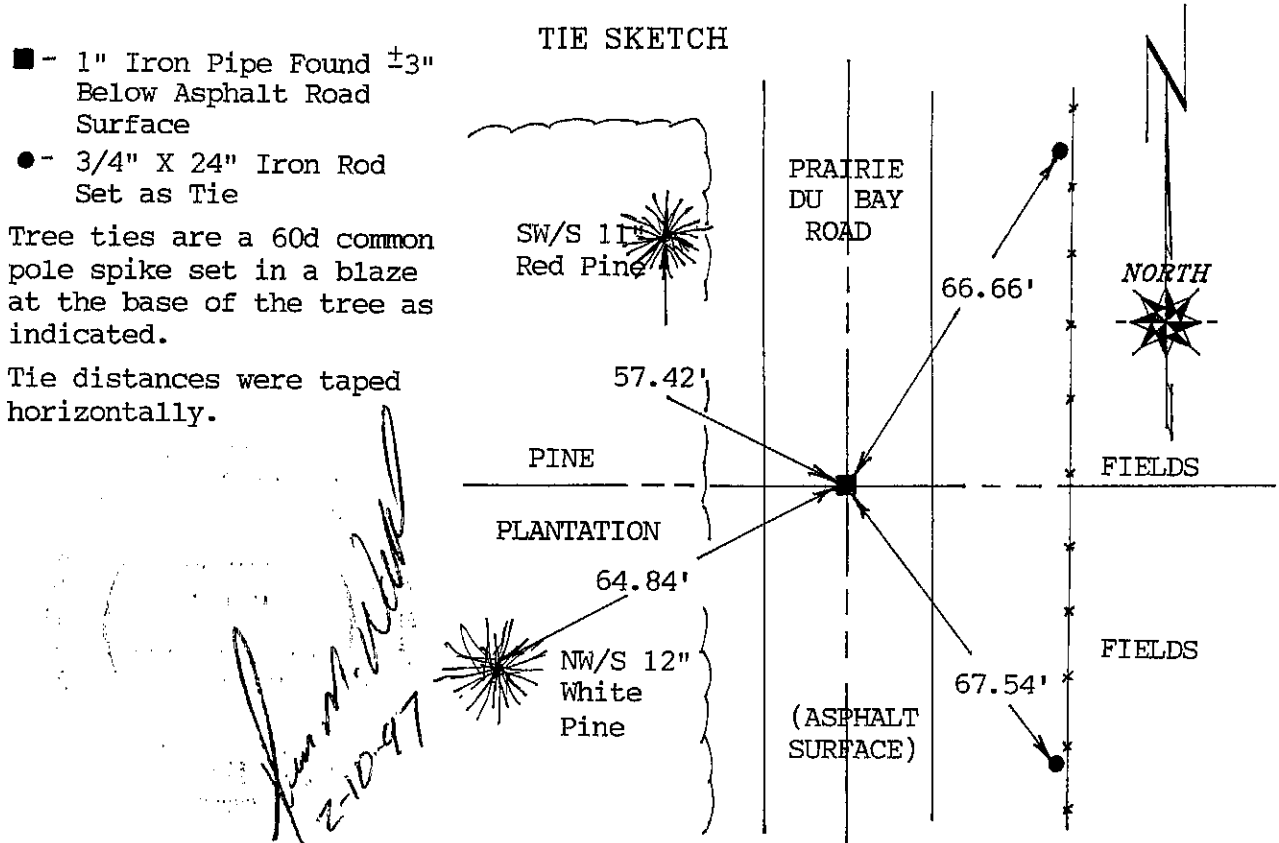
■ - 1" Iron Pipe Found ± 3 "
 Below Asphalt Road
 Surface

● - 3/4" X 24" Iron Rod
 Set as Tie

Tree ties are a 60d common pole spike set in a blaze at the base of the tree as indicated.

Tie distances were taped horizontally.

TIE SKETCH



Sean M. Walsh
 2-10-97