

U. S. PUBLIC LAND SURVEY MONUMENT RECORD

REC'D MAY 12 1997

INSTRUCTIONS:

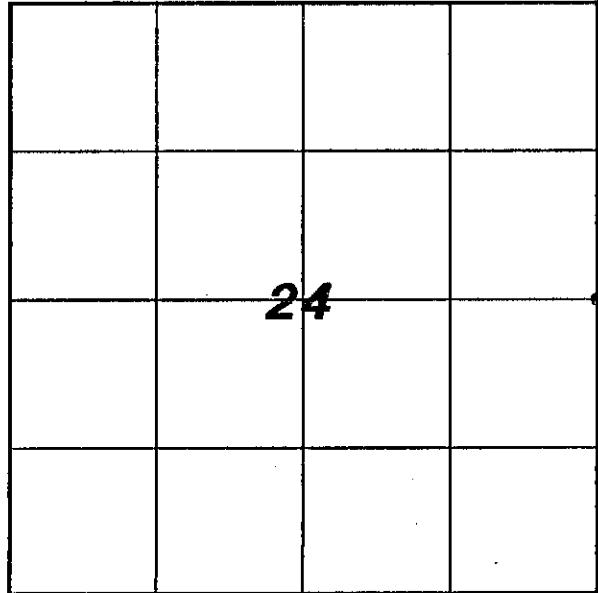
This record shall show the location of the corner and shall include all of the following nine elements (a through i).

(a) Identify the corner by reference to the U.S. public land survey system.

● - Corner monument restored

E1/4 CORNER SECTION 24,
T8N, R3W, GRANT COUNTY.

Date of Survey: April 8, 1997



(b) Describe any record evidence, monument evidence, occupational evidence, testimonial evidence or any other material evidence you considered, and whether the monument was found or placed.

I found a 1" iron pipe at the East 1/4 corner. This location agrees with measurements to stakes and other government corners as shown on several survey maps.

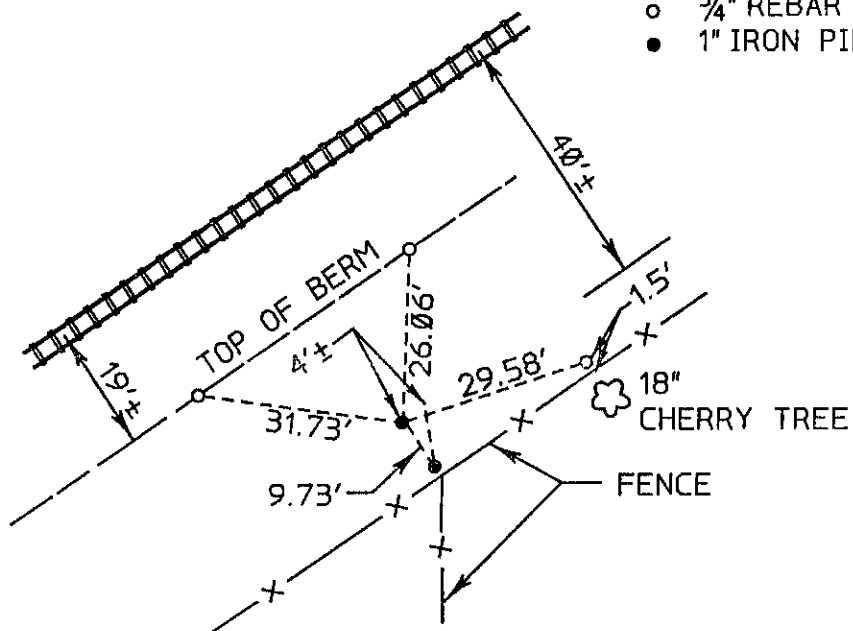
(c) In the plan view drawing below, provide reference ties to at least 4 witness monuments, or, if the location is within a municipality, to at least 2 witness monuments. (Witness monuments shall be made of concrete, natural stone, iron or other equally durable material.) Describe witness monuments.

(d) Show a plan view drawing depicting the relevant monuments and reference ties which is sufficient in detail to enable accurate relocation of the corner monument if the corner monument is disturbed. Indicate north.

LEGEND

- 3/4" REBAR SET
- 1" IRON PIPE FOUND

N



any material discrepancy between the location of the corner as restored or reestablished and the location of that
previously restored or reestablished by distance and direction. Show the discrepancy on the plan view drawing under
(1) the corner as restored or reestablished, and (2) to at least 2 of the witness monuments shown on the drawing in (d), above.
known discrepancy

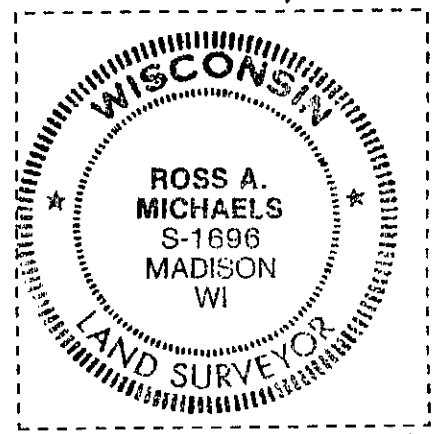
(f) Was the corner restored through acceptance of (1) an obliterated evidence location, or, (2) a found perpetuated location?

Found perpetuated location

(g&h) Was the corner reestablished through lost corner proportionate methods? If so, show the method, including the directions and
distances to other public land survey corners used as evidence or used for proportioning in determining the corner location?

Not a lost corner

Affix Land Surveyor Seal



(i) I, Ross A. Michaels
(type or print name) certify that the corner location shown on this record was determined by
me or under my direction and control and that this U.S. Public Land Survey Monument Record is
correct and complete to the best of my knowledge and belief.

Ross A. Michaels April 21, 1997
Signature Date