

REC'D FEB 13 1997

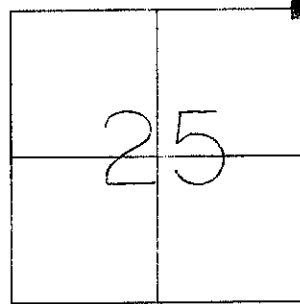
# GRANT COUNTY U.S. PUBLIC LAND SURVEY MONUMENT RECORD

TYPE OF MONUMENT: 1" Iron Pipe  
TIES ARE AS INDICATED ON SKETCH

WITNESSES TO CORNER LOCATION

Sean M. Walsh

Christopher G. Reedy



CORNER LOCATION

Northeast Corner  
Section 25  
Town 8 North, Range 3 West  
Boscobel Township

### BASIS FOR MONUMENT LOCATION

Subsequent to Original Gov't. survey, this corner was used most recently by Homer Ralph in 1975 at which time he documented a 30" Oak Tree for the corner. In 1979 D. Davis documented having set a 1" iron pipe at this corner.

I located and accepted a 1" iron pipe at the base of a dead 32" Oak Tree and accepted it as the best available evidence.

The original Gov't. Notes indicate a double corner at this location, however the physical occupation is not such.

I have perpetuated this corner as shown hereon and this information is correct and true to the best of my knowledge and belief.

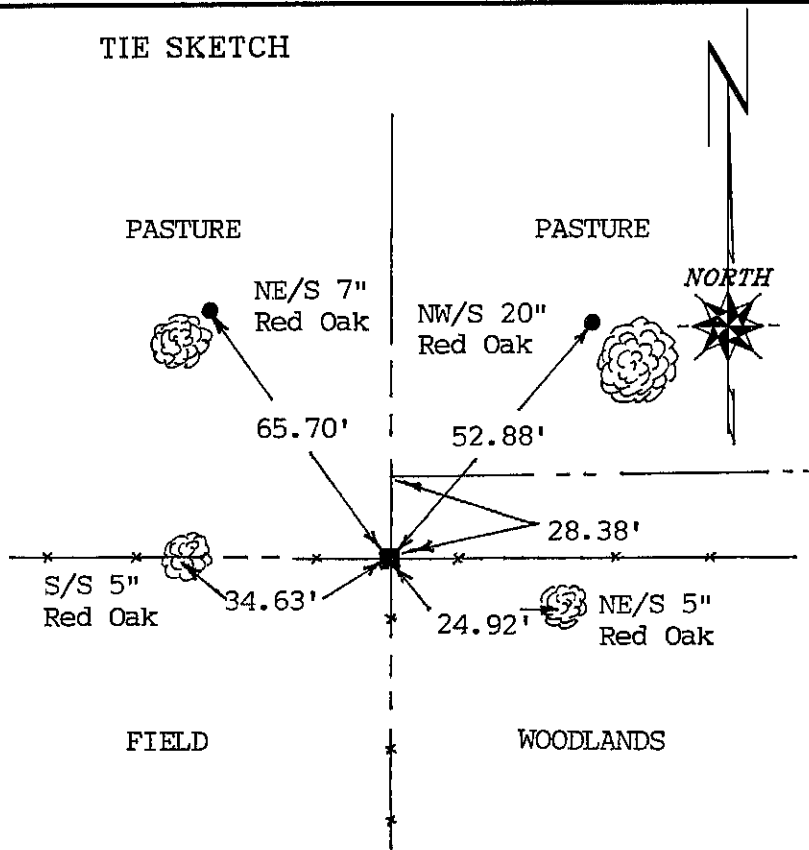
■ - 1" Iron Pipe at Corner

### TIE SKETCH

● - 3/4" X 24" Iron Rod  
Set as Tie

Tree ties are a 60d Common Pole Spike set in a blaze at the base of the tree as indicated.

Tie distances were taped horizontally.



*[Handwritten signature and circular stamp]*