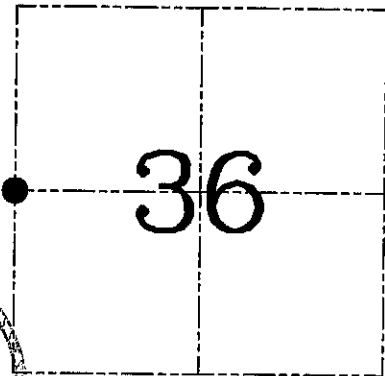
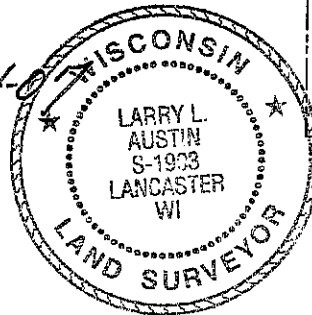


**U.S. PUBLIC LAND SURVEY MONUMENT RECORD - GRANT COUNTY, WI**  
**Section 36, Town 8 North Range 2 West, Town of Watterstown**

CERTIFICATE

I, Larry L. Austin, do hereby certify that the corner location on this record was determined by me and/or under my direct supervision and that this U.S. public land survey monument record is correct and complete to the best of my knowledge and belief.

*Larry L. Austin* 2/24/07  
 Larry L. Austin, S-1903 date



● = CORNER LOCATION

HISTORY OF CORNER ESTABLISHMENT

Corner was originally set in 1833 by Parke. In 1981 Blackledge & Associates tied to the corner. No other record of the corner was found.

DESCRIPTION OF CORNER EVIDENCE FOUND

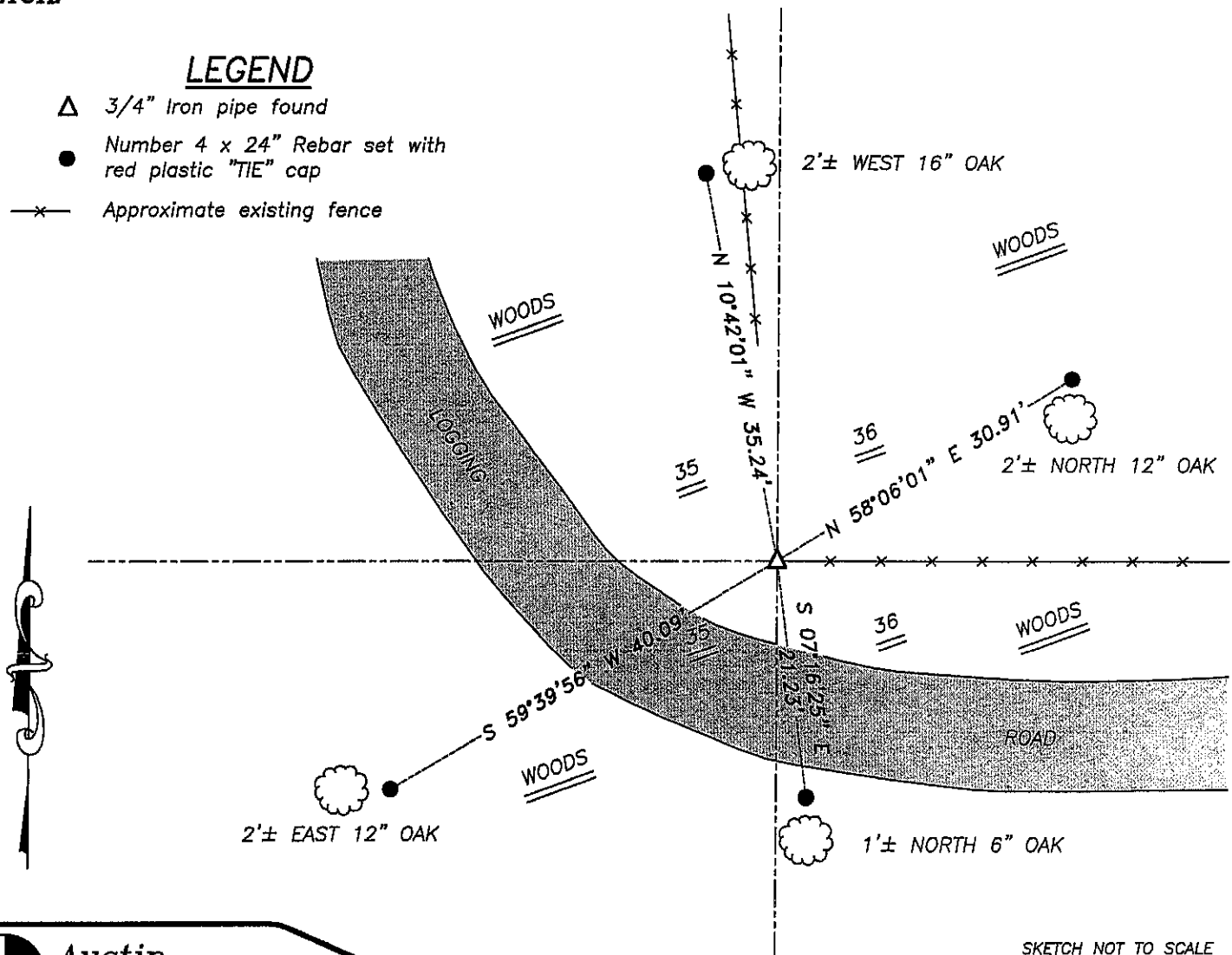
I found an existing 3/4" iron pipe at this location. I accepted it's location after an EDM & GPS traverse of the area.

DESCRIPTION OF CORNER AND WITNESS MONUMENTS, references and accessories used to perpetuate the original or re-established location of this corner. Witnesses to corner location Bobby Sedgwick & Brad Digman & Shelby Blindert

**SKETCH:**

LEGEND

- △ 3/4" Iron pipe found
- Number 4 x 24" Rebar set with red plastic "TIE" cap
- \*— Approximate existing fence



SKETCH NOT TO SCALE



**Austin Engineering LLC**

4211 HWY 81 E, LANCASTER, WI 53813  
 PHONE 608-723-6363 FAX 608-723-6702

JOB NUMBER 07S001  
 FIELDBOOK: TDSR, 2322  
 G:\T8NR2W\27  
 H:\TIE\T8NR2W\119

DRAWN BY: SW AUSTIN  
 APPROVED: LL AUSTIN