

U.S. PUBLIC LAND SURVEY MONUMENT RECORD

Section 36, Town 8 North Range 2 West, Town of Watterstown, Grant County, Wisconsin

CERTIFICATE

I, Larry L. Austin, do hereby certify that the corner location on this record was determined by me and/or under my direct supervision and that this U.S. public land survey monument record is correct and complete to the best of my knowledge and belief.



Larry L. Austin
 Larry L. Austin, S-1903



HISTORY OF CORNER

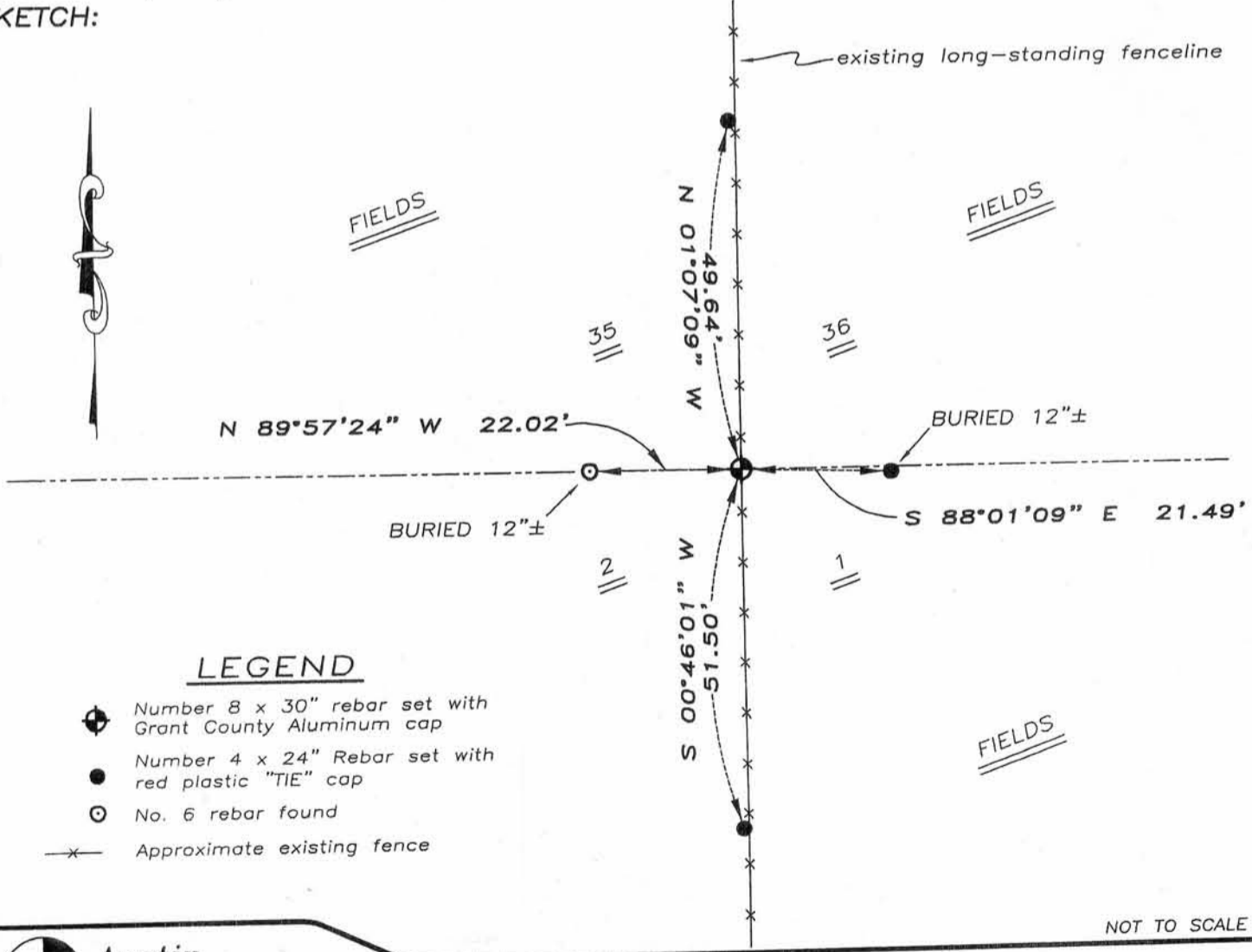
Corner was originally set by Lyon. In 1991 Richard Marks set and tied a No. 6 iron bar. No other record of the corner was found.

CORNER EVIDENCE FOUND

I found Marks' No. 6 rebar and did not accept it. I set the Northing of the corner on-line between the South 1/4 of Section 35 and South 1/4 of Section 36. I set the Easting in a North-South long-standing fence. This location falls within three feet of being on-line with the West line of the NW 1/4 of Section 36. This location fits other occupied locations throughout Section 36. Verified this location using EDM & GPS methods.

DESCRIPTION OF CORNER AND WITNESS MONUMENTS, references and accessories used to perpetuate the original or re-established location of this corner. Witnesses to monument location Bobby Sedgwick & Brad Digman & Shane Austin

SKETCH:



LEGEND

- Number 8 x 30" rebar set with Grant County Aluminum cap
- Number 4 x 24" Rebar set with red plastic "TIE" cap
- No. 6 rebar found
- x— Approximate existing fence

NOT TO SCALE

Austin Engineering LLC
 4211 HWY 81 E, LANCASTER, WI 53813
 PHONE 608-723-6363 FAX 608-723-6702

JOB NUMBER 07S232
 FIELDBOOK: TDSR, 2708
 G:\T8NR2W\27
 H:\TIE\T8NR2W\123

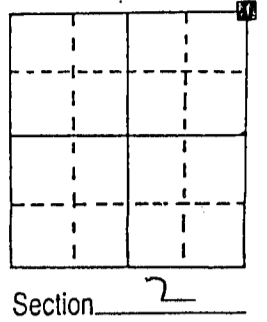
DRAWN BY: SW AUSTIN
 APPROVED: LL AUSTIN

DEC 30 1991

U.S. PUBLIC LAND SURVEY MONUMENT RECORD

Note: This form is intended and designed to fulfill all requirements of Wisconsin Administrative Code, Chapter A-E 5.02, U.S. Public Land Survey Monument Record (3) (a) (b) (c) (d) (e) (f) (g) (h) (i). An additional sheet may be added if necessary to conform with said requirements.

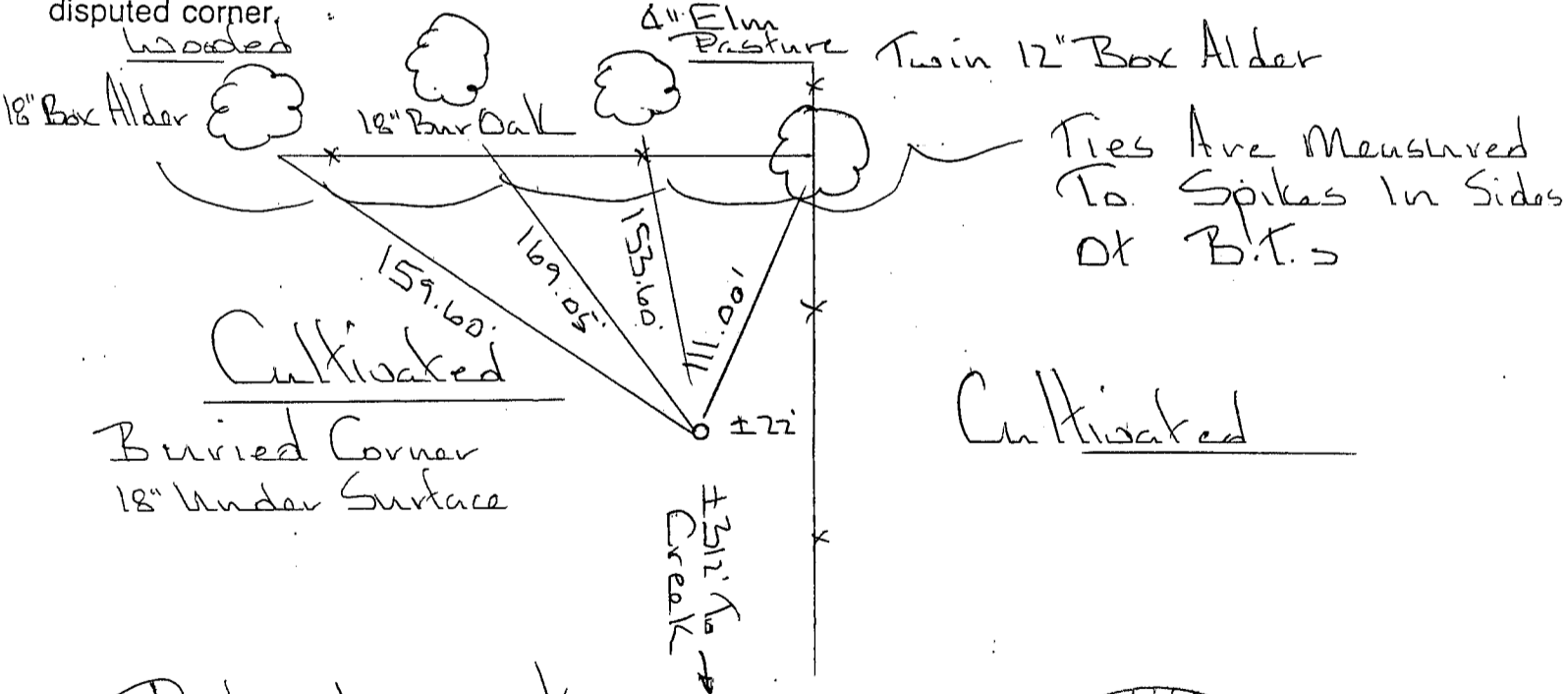
(a) Corner location: Township 7 North
Range 2 ~~East~~ West
Town/City/Village Hickory Grove
County Crawford



(b) (f) (g) (h) Description of monument found at this corner and if it was accepted, state all evidence (material, testimonial, occupational, plats, records, other monuments) used as a basis for accepting. If not accepted or if nothing was found, state evidence used as basis for establishing location. If reestablished through lost corner proportionate methods, indicate all monuments, distances and directions used to establish.

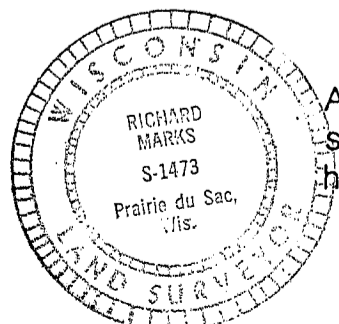
Set By Proportionate Measurement Between
(The Northeast Corner of Section 1 (A 1" Iron
pipe found) And The Northwest Corner of
Section 2 (Set From Original Evidence).
Used Pipe At The S1/4 Corner of Section
35-8-2W For Line (1" Pipe Found)

(c) (d) (e) Plan view of corner with ties to at least 4 witness monuments. If in disagreement with previously established corner, show the distances between the two corners and also indicate the ties to the disputed corner.



(i) I, Richard Marks
(type or print name) certify that the corner location on this record was determined by me or under my direction and control and that this U.S. Public Land Survey Monument Record is correct and complete to the best of my knowledge and belief.

Richard Marks
Signature Date 12/24/91



Affix seal here