

GRANT COUNTY CERTIFIED LAND CORNER

CORNER NO. 06

CERTIFICATE:

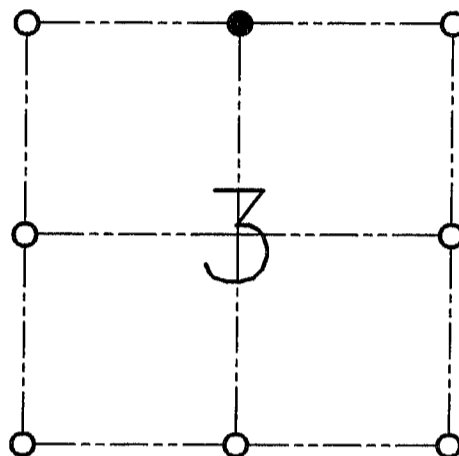
I, LARRY L. AUSTIN, DO HEREBY CERTIFY THAT ON FIFTEENTH DAY OF MARCH, 1999, I FOUND NO EVIDENCE OF THE NORTH 1/4 CORNER OF SECTION 3, TOWN 7 NORTH, RANGE 4 WEST, OF THE FOURTH PRINCIPAL MERIDIAN, AND I RE-ESTABLISHED SAID CORNER ACCORDING TO THE WISCONSIN STATUTES AS SHOWN AND DESCRIBED HEREON.

DATED THIS TWENTY-SIXTH DAY OF MARCH, 1999

Larry L. Austin
LARRY L. AUSTIN S-1903



SEAL



● = CORNER LOCATION

**NORTH 1/4 CORNER OF
SECTION 3, T 7 N R 2 W
TOWN OF HICKORY GROVE**

HISTORY OF ORIGINAL CORNER ESTABLISHMENT:

CORNER WAS NEVER ORIGINALLY SET.

DESCRIPTION OF CORNER EVIDENCE FOUND:

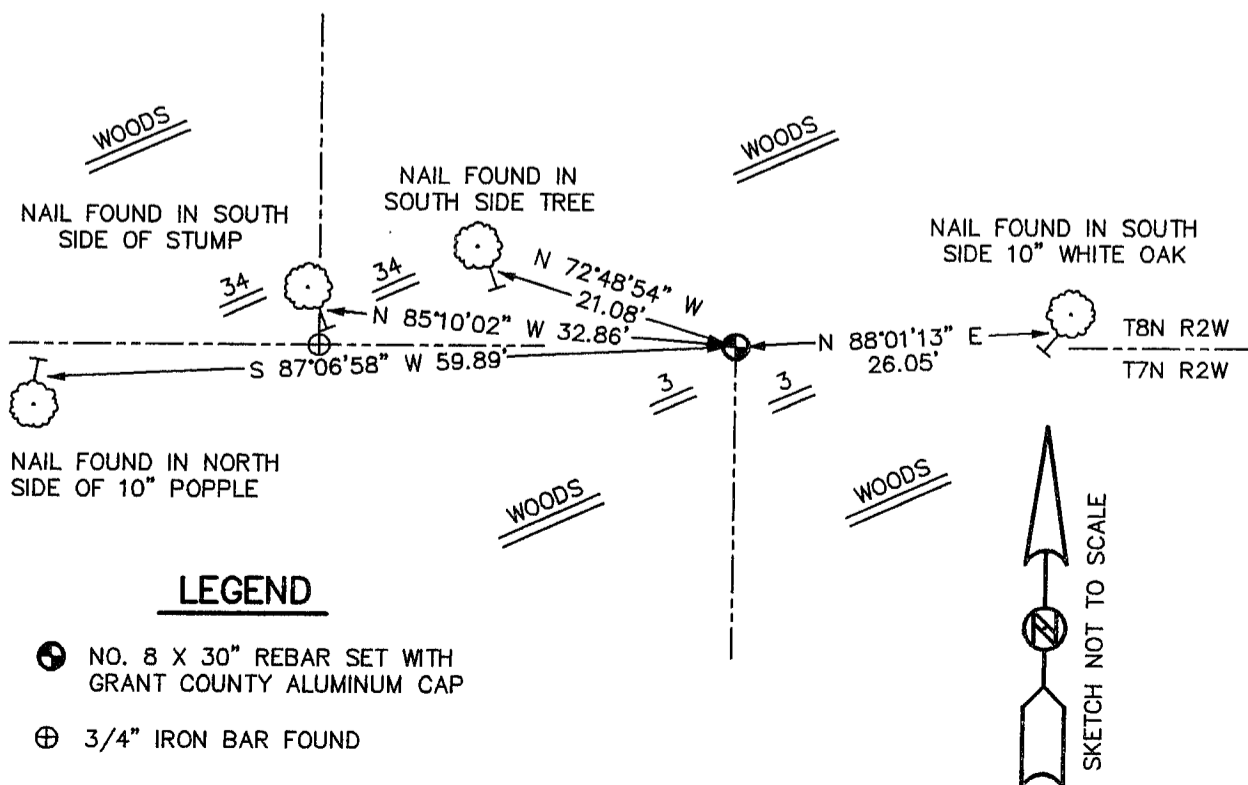
I SET THE CORNER AT THE PROPORTIONED OFFSET AND ONLINE BETWEEN THE SOUTH 1/4 AND SOUTHEAST CORNER OF SECTION 34, T8N R2W. VERIFIED THIS LOCATION USING E.D.M. AND G.P.S. METHODS.

DESCRIPTION OF CORNER AND WITNESS MONUMENTS, REFERENCES AND ACCESSORIES USED TO PERPETUATE THE ORIGINAL OR RE-ESTABLISHED LOCATION OF THIS CORNER:

WITNESS TO THE CORNER LOCATION:

BOBBY SEDGWICK
SHELBY BLINDERT

SKETCH:



LEGEND

- NO. 8 X 30" REBAR SET WITH GRANT COUNTY ALUMINUM CAP
- ⊕ 3/4" IRON BAR FOUND



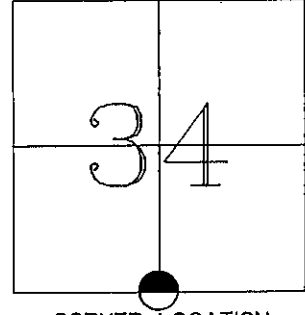
REC'D AUG 19 1997

GRANT COUNTY U.S. PUBLIC LAND SURVEY MONUMENT RECORD

TYPE OF MONUMENT: 3/4" x 24" Iron Rod set
TIES ARE AS INDICATED ON SKETCH

WITNESSES TO CORNER LOCATION

Reginald Jaquish
Christopher Ruetten



CORNER LOCATION

SOUTH 1/4 SECTION 34, T8N, R2W

BASIS FOR MONUMENT LOCATION

Subsequent to Original Gov't. Survey of 1832, I could no locate any record evidence of this corner having been used.

I located the remains of a Tree which I believe to be one used in the original Gov't. Survey. I re-established this corner according to said tree and set a 3/4" x 24" iron rod and perpetuated according to the information contained hereon.

I do hereby certify that this information is correct and true to the best of my knowledge and belief.

TIE SKETCH

