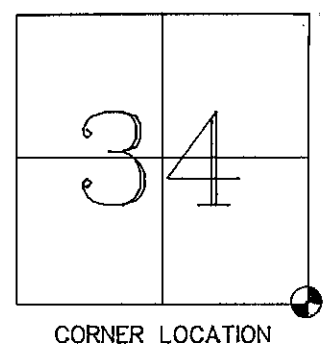


REC'D AUG 19 1997

# GRANT COUNTY U.S. PUBLIC LAND SURVEY MONUMENT RECORD

TYPE OF MONUMENT: 3/4" x 24" Iron Rod set  
TIES ARE AS INDICATED ON SKETCH

WITNESSES TO CORNER LOCATION  
Reginald Jaquish  
Christopher Ruetten



CORNER LOCATION

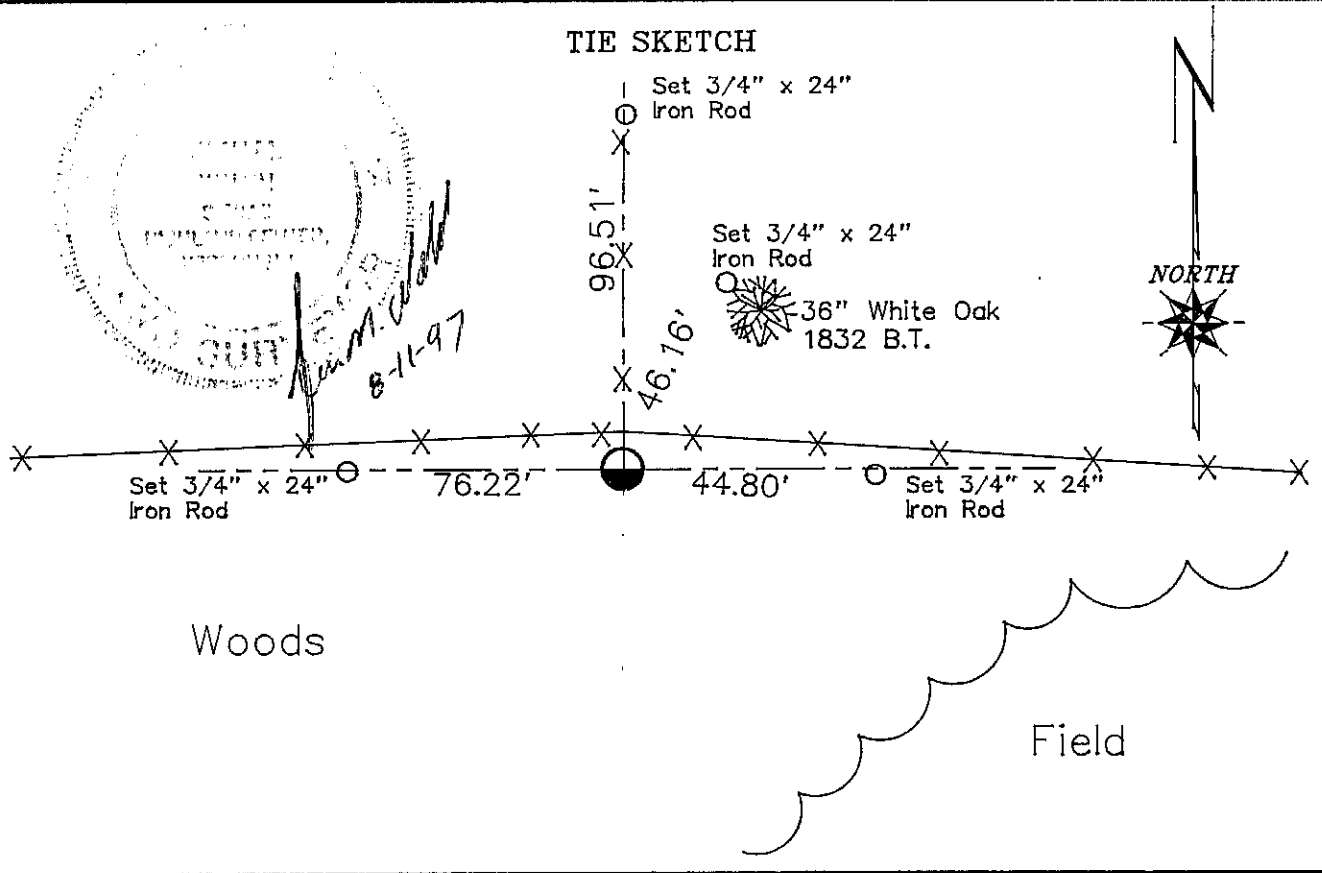
BASIS FOR MONUMENT LOCATION

SOUTHEAST SECTION 34 T8N R2W

I have monumented and perpetuated this corner in accordance with the information contained hereon and this information is true and correct to the best of my knowledge and belief.

I have accepted the 36" white oak shown hereon as the one documented on the Original Gov't. survey and monumented and perpetuated as shown hereon.

### TIE SKETCH



# U.S. PUBLIC LAND SURVEY MONUMENT RECORD

Note: This form is intended and designed to fulfill all requirements of Wisconsin Administrative Code, Chapter A-E 5.02, U.S. Public Land Survey Monument Record (3) (a) (b) (c) (d) (e) (f) (g) (h) (i). An additional sheet may be added if necessary to conform with said requirements.

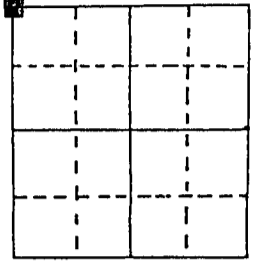
(a) Corner location: Township 2 North

Range 2 East West

Town/City/Village Hickory Grove

DEC 30 1991

County Grant

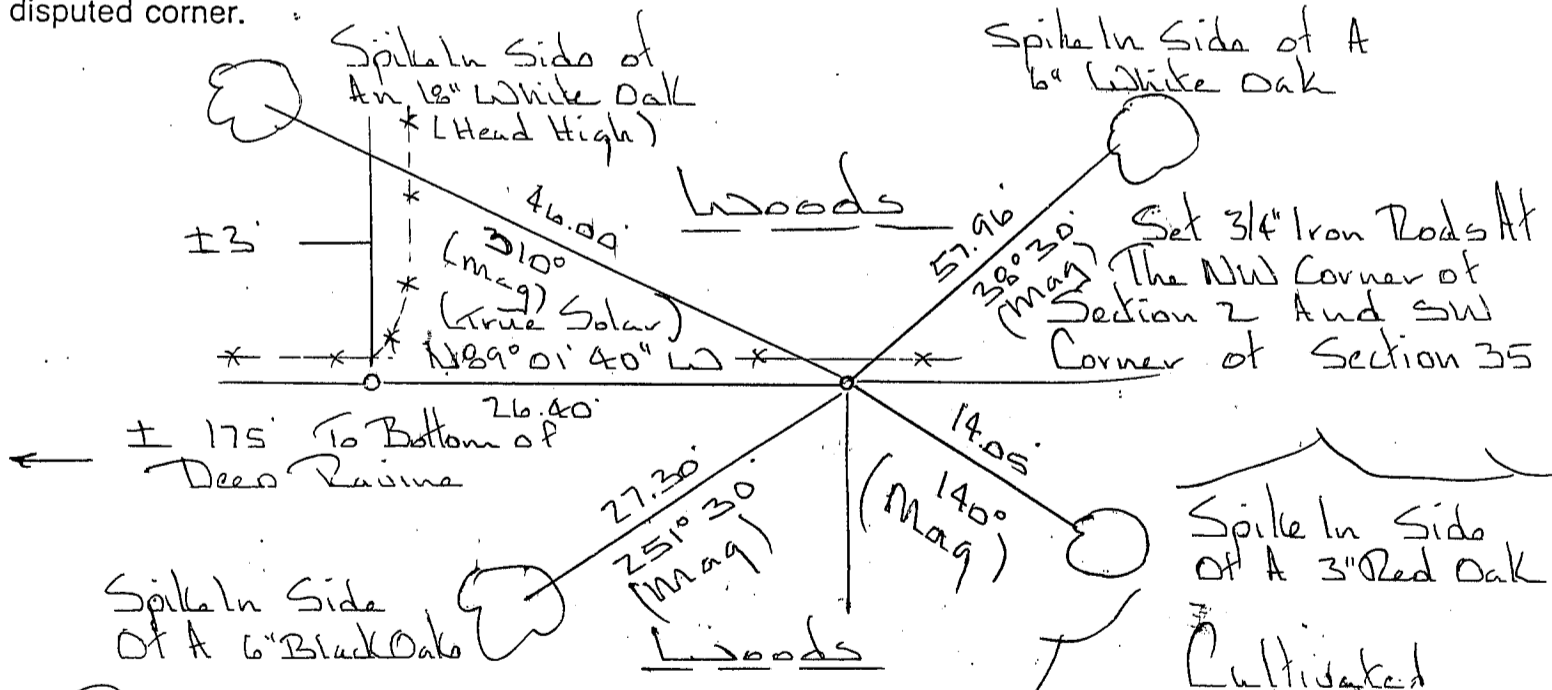


Section 2

(b) (f) (g) (h) Description of monument found at this corner and if it was accepted, state all evidence (material, testimonial, occupational, plats, records, other monuments) used as a basis for accepting. If not accepted or if nothing was found, state evidence used as basis for establishing location. If reestablished through lost corner proportionate methods, indicate all monuments, distances and directions used to establish.

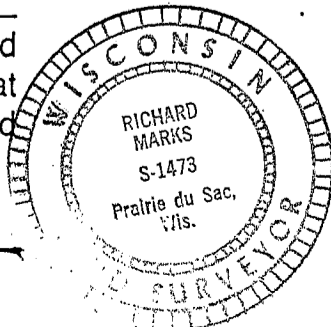
Set Corner 26.4' (Closing Distance) From The Southwest Corner of Section 35. T8N. R2W. The Southwest Corner of Section 35 Was Re-established From The Original White Oak Bearing Tree N34°E. 46.0' Still Standing But Hollow.

(c) (d) (e) Plan view of corner with ties to at least 4 witness monuments. If in disagreement with previously established corner, show the distances between the two corners and also indicate the ties to the disputed corner.



(i) Richard Marks

(type or print name) certify that the corner location on this record was determined by me or under my direction and control and that this U.S. Public Land Survey Monument Record is correct and complete to the best of my knowledge and belief.



Affix seal here

[Signature]  
Signature

12/24/1991  
Date