

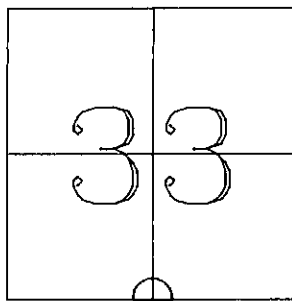
REC'D AUG 19 1997

GRANT COUNTY U.S. PUBLIC LAND SURVEY MONUMENT RECORD

TYPE OF MONUMENT: 3/4" REBAR
TIES ARE AS INDICATED ON SKETCH

WITNESSES TO CORNER LOCATION

Reginald Jaquish
Christopher Ruetten



CORNER LOCATION

BASIS FOR MONUMENT LOCATION

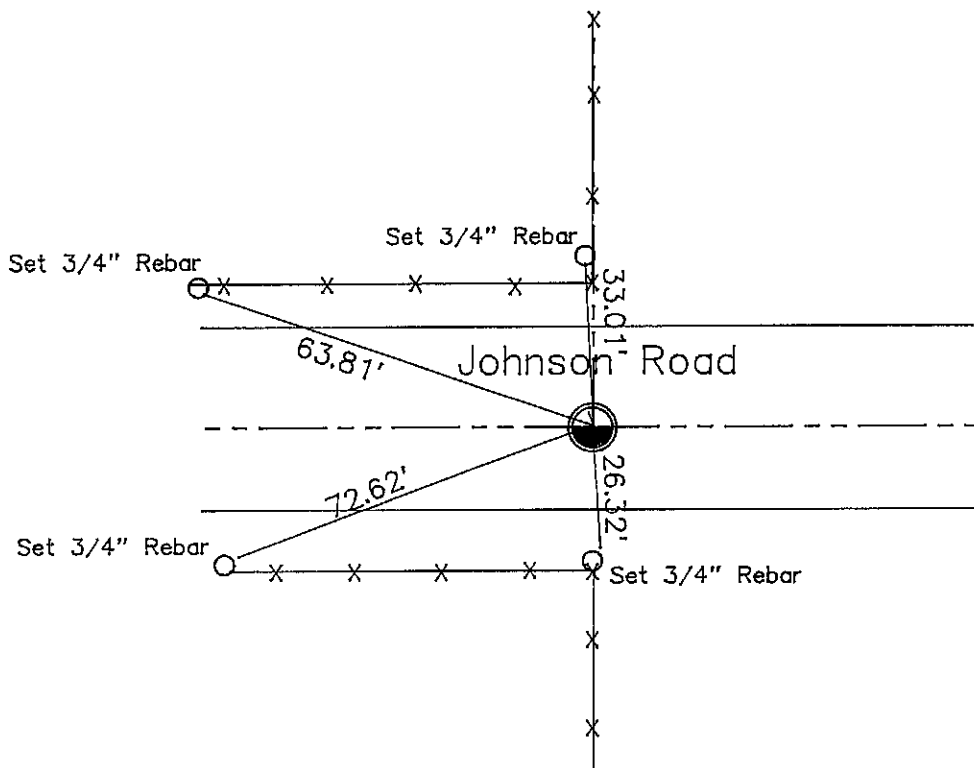
S 1/4 Cor. Sec 33, T8N, R2W

I could not find any evidence of any previous survey, therefore I Accepted this location as physical occupation as the only acceptable evidence and monumented and perpetuated as shown hereon.

I do hereby certify that the information contained hereon is correct and true to the best of my information, knowledge and belief.

[Handwritten signature]
8-11-97

TIE SKETCH

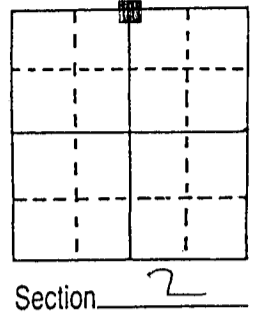


U.S. PUBLIC LAND SURVEY MONUMENT RECORD

DEC 30 1991

Note: This form is intended and designed to fulfill all requirements of Wisconsin Administrative Code, Chapter A-E 5.02, U.S. Public Land Survey Monument Record (3) (a) (b) (c) (d) (e) (f) (g) (h) (i). An additional sheet may be added if necessary to conform with said requirements.

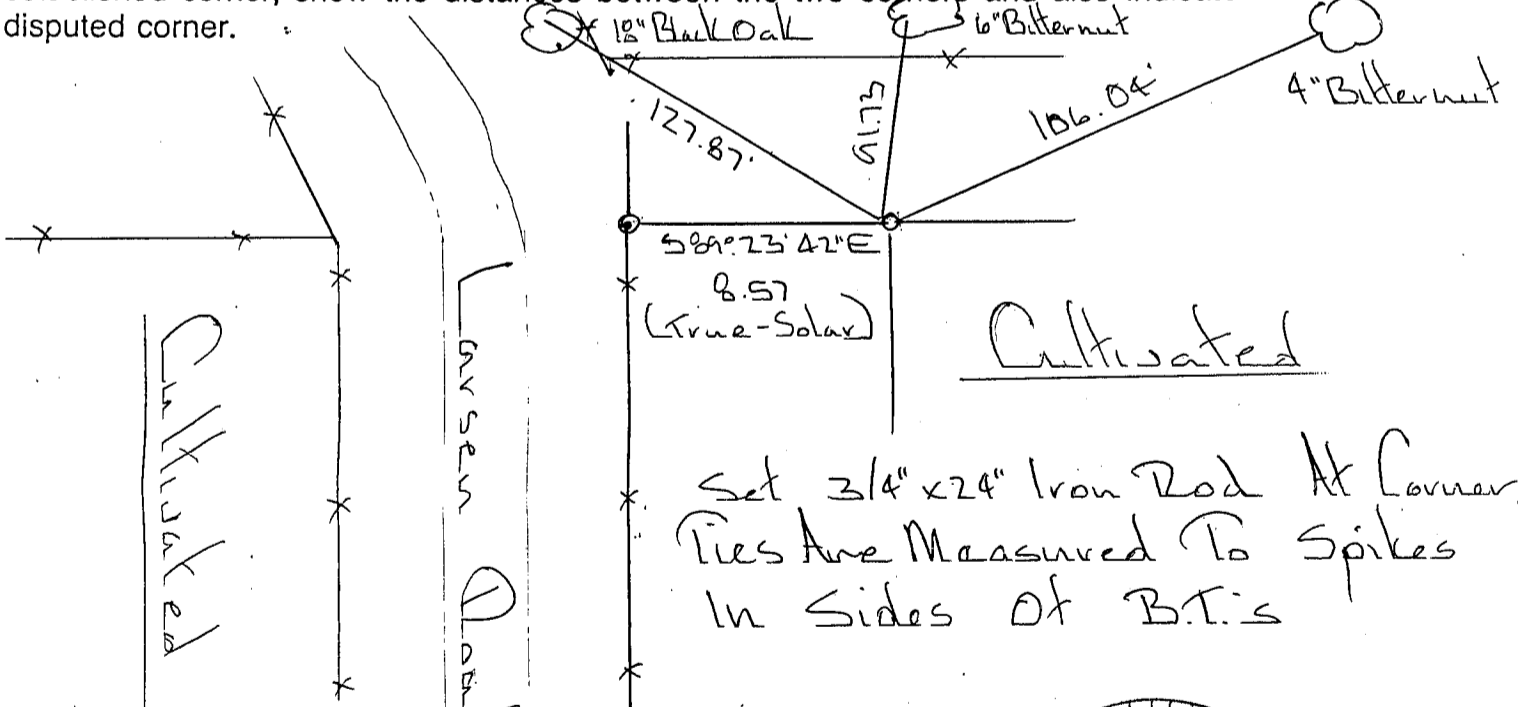
(a) Corner location: Township 7 North
 Range 2 East/West
 Town/City/Village Hickory Grove
 County Grant



(b) (f) (g) (h) Description of monument found at this corner and if it was accepted, state all evidence (material, testimonial, occupational, plats, records, other monuments) used as a basis for accepting. If not accepted or if nothing was found, state evidence used as basis for establishing location. If reestablished through lost corner proportionate methods, indicate all monuments, distances and directions used to establish.

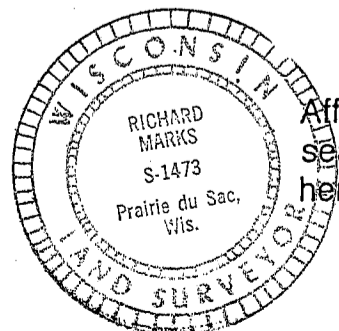
Set By Proportionate Measurement Between The Northeast Corner of Section 1 (A 1" Iron Pipe Found) And The Northwest Corner of Section 2 (Set From Original Evidence) I Used A 1" Pipe At The South 1/4 Corner Of Section 35. T. 7 N. R. 2 E. For Line (Found Pipe)

(c) (d) (e) Plan view of corner with ties to at least 4 witness monuments. If in disagreement with previously established corner, show the distances between the two corners and also indicate the ties to the disputed corner.



Set 3/4" x 24" Iron Rod At Corner
 Ties Are Measured To Spikes
 In Sides Of B.T.'s

(i) Richard Marks
 (type or print name) certify that the corner location on this record was determined by me or under my direction and control and that this U.S. Public Land Survey Monument Record is correct and complete to the best of my knowledge and belief.



Richard Marks
 Signature Date 12/24/91