

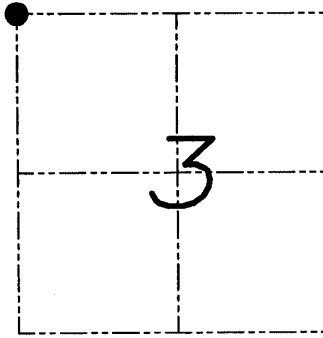
# U.S. PUBLIC LAND SURVEY MONUMENT RECORD

Section 3, Town 7 North Range 2 West, Town of Hickory Grove, Grant County, Wisconsin

## CERTIFICATE

I, Larry L. Austin, do hereby certify that the corner location on this record was determined by me and/or under my direct supervision and that this U.S. public land survey monument record is correct and complete to the best of my knowledge and belief.

*Larry L. Austin*  
 Larry L. Austin, 6-19-08  
 Lancaster, WI date



● = CORNER LOCATION

## HISTORY OF CORNER

Corner was originally set in 1833 by Parke.  
 No recent record of the corner was found.

## CORNER EVIDENCE FOUND

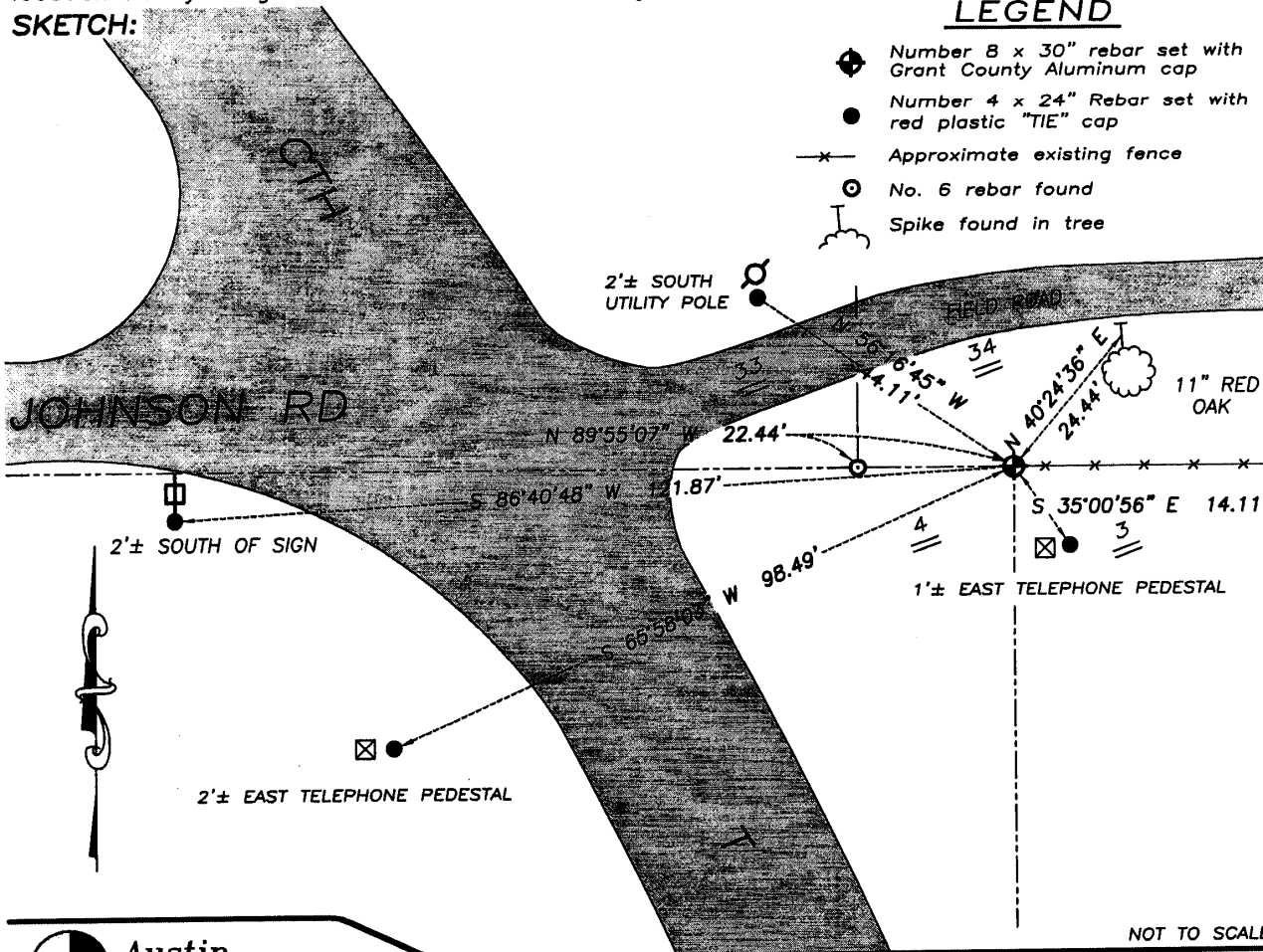
I reset the corner at the recorded offset from the Southwest corner of Section 34, T8N R2W. Verified this location using EDM & GPS methods.

DESCRIPTION OF CORNER AND WITNESS MONUMENTS, references and accessories used to perpetuate the original or re-established location of this corner. Witnesses to monument location Bobby Sedgwick & Brad Hazen & Shelby Blindert

## SKETCH:

## LEGEND

- ◆ Number 8 x 30" rebar set with Grant County Aluminum cap
- Number 4 x 24" Rebar set with red plastic "TIE" cap
- x- Approximate existing fence
- ⊙ No. 6 rebar found
- ⌘ Spike found in tree



NOT TO SCALE

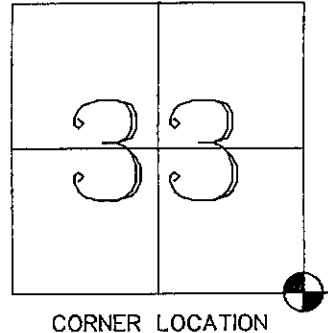
REC'D AUG 19 1997

# GRANT COUNTY U.S. PUBLIC LAND SURVEY MONUMENT RECORD

TYPE OF MONUMENT: 3/4" Rebar  
TIES ARE AS INDICATED ON SKETCH

WITNESSES TO CORNER LOCATION

Reginald Jaquish  
Christopher Ruetten



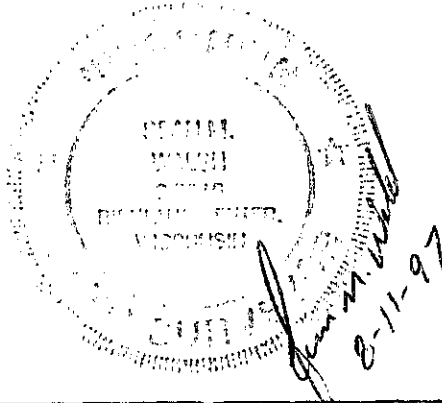
CORNER LOCATION

BASIS FOR MONUMENT LOCATION

SE Cor. S33, T8N, R2W

I re-established this corner at a location which is on a projection of occupied lines. This location is well within reasonable proximity of a proportionate locaion. I monumented and perpetuated this corner as shown hereon.

I do hereby certify that this corner is correct and true to the best of my information, knowledge and belief.



## TIE SKETCH

