

GRANT COUNTY CERTIFIED LAND CORNER

CORNER NO. 130

CERTIFICATE:

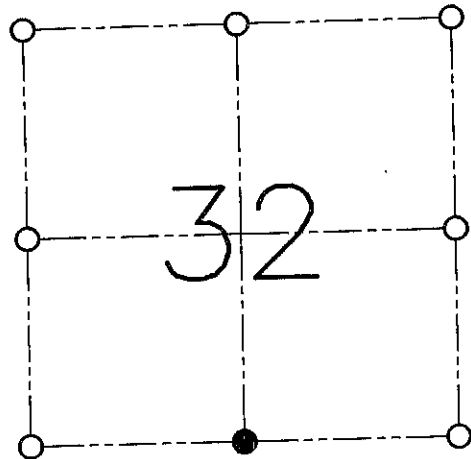
I, LARRY L. AUSTIN, DO HEREBY CERTIFY THAT ON FIFTEENTH DAY OF MARCH, 1999, I FOUND NO EVIDENCE OF THE SOUTH 1/4 CORNER OF SECTION 32, TOWN 8 NORTH, RANGE 2 WEST, OF THE FOURTH PRINCIPAL MERIDIAN, AND I RE-ESTABLISHED SAID CORNER ACCORDING TO THE WISCONSIN STATUTES AS SHOWN AND DESCRIBED HEREON.

DATED THIS TWENTY-SIXTH DAY OF MARCH, 1999

Larry L. Austin
LARRY L. AUSTIN S-1903



SEAL



● = CORNER LOCATION

SOUTH 1/4 CORNER OF
SECTION 32, T 8 N R 2 W
TOWN OF WATTERSTOWN

HISTORY OF ORIGINAL CORNER ESTABLISHMENT:

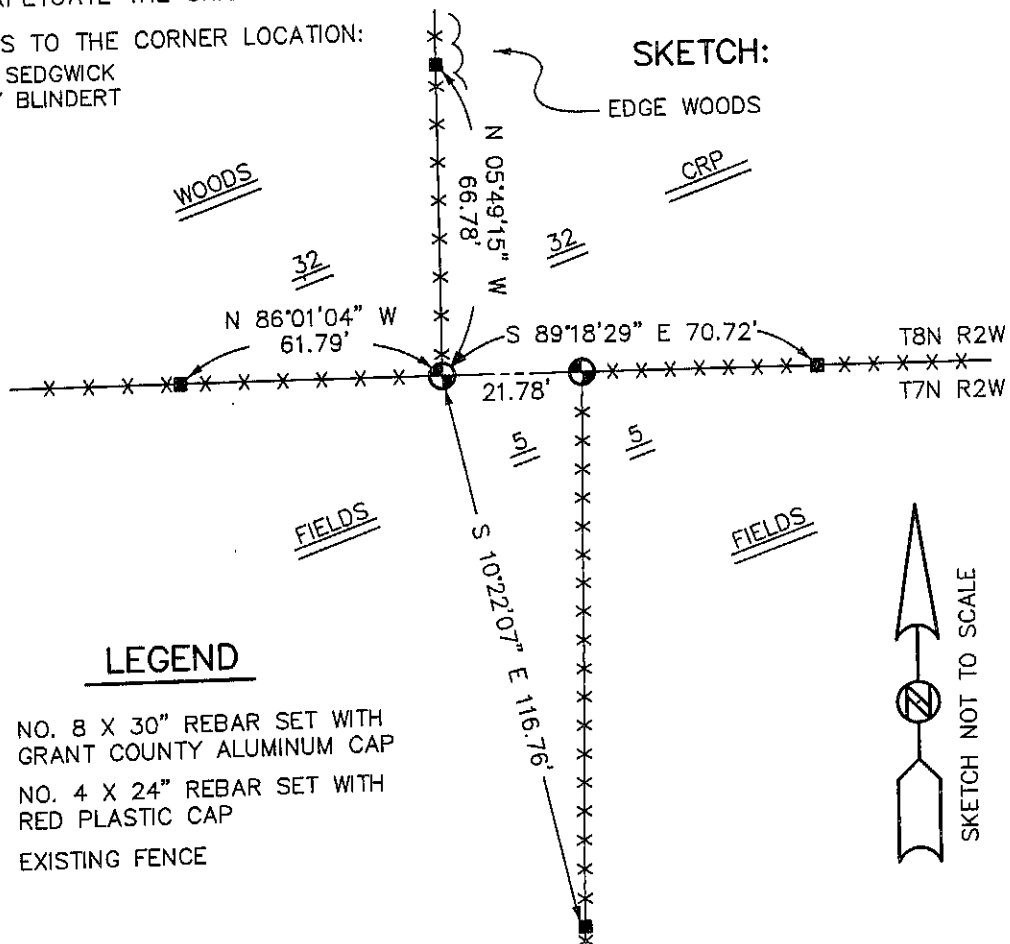
CORNER WAS SET IN 1832 BY SIBLEY.

DESCRIPTION OF CORNER EVIDENCE FOUND:

I SET THE CORNER AT THE PROPORTIONED OFFSET OPPOSITE DIRECTION. THIS LOCATION FIT WITH THE OCCUPATIONAL EVIDENCE. VERIFIED THIS LOCATION USING E.D.M. AND G.P.S. METHODS.

DESCRIPTION OF CORNER AND WITNESS MONUMENTS, REFERENCES AND ACCESSORIES USED TO PERPETUATE THE ORIGINAL OR RE-ESTABLISHED LOCATION OF THIS CORNER:

WITNESS TO THE CORNER LOCATION:
BOBBY SEDGWICK
SHELBY BLINDERT



GRANT COUNTY CERTIFIED LAND CORNER

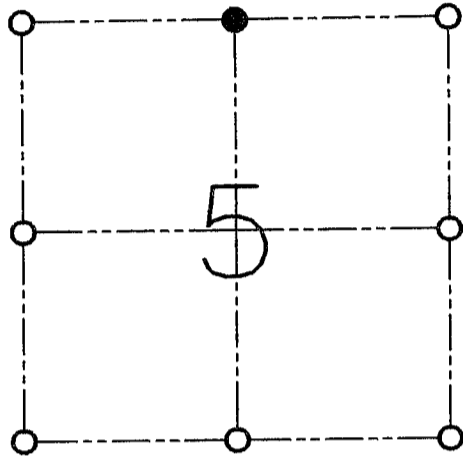
CORNER NO. 10

CERTIFICATE:

I, LARRY L. AUSTIN, DO HEREBY CERTIFY THAT ON FIFTEENTH DAY OF MARCH, 1999, I FOUND OCCUPATIONAL EVIDENCE OF THE NORTH 1/4 CORNER SECTION 5, TOWN 7 NORTH, RANGE 2 WEST, OF THE FOURTH PRINCIPAL MERIDIAN, AND I RE-ESTABLISHED SAID CORNER ACCORDING TO THE WISCONSIN STATUTES AS SHOWN AND DESCRIBED HEREON.

DATED THIS TWENTY-SIXTH DAY OF MARCH, 1999

Larry L. Austin
LARRY L. AUSTIN S-1903



● = CORNER LOCATION

**NORTH 1/4 CORNER OF
SECTION 5, T 7 N R 2 W
TOWN OF HICKORY GROVE**

HISTORY OF ORIGINAL CORNER ESTABLISHMENT:

CORNER WAS NEVER ORIGINALLY SET.

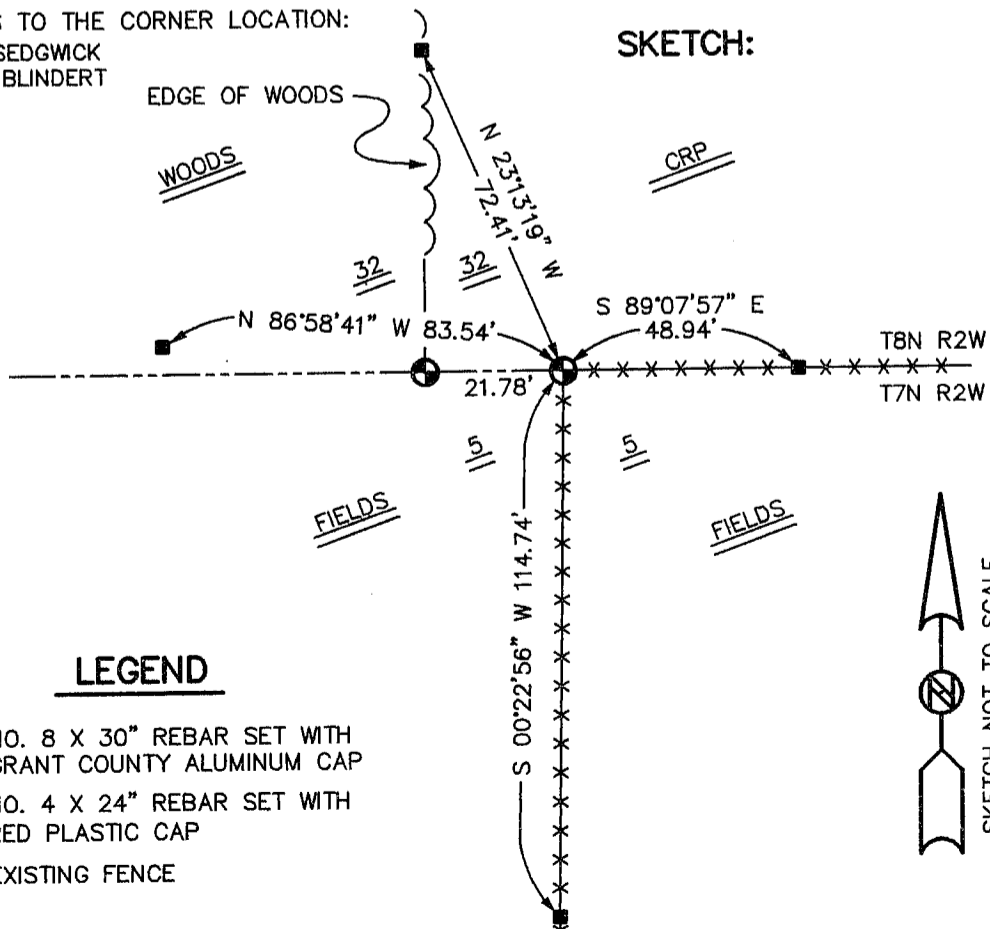
DESCRIPTION OF CORNER EVIDENCE FOUND:

I SET THE CORNER AT AN OCCUPIED FENCE CORNER.
VERIFIED THIS LOCATION USING E.D.M. AND G.P.S. METHODS.

DESCRIPTION OF CORNER AND WITNESS MONUMENTS, REFERENCES AND ACCESSORIES USED TO PERPETUATE THE ORIGINAL OR RE-ESTABLISHED LOCATION OF THIS CORNER:

WITNESS TO THE CORNER LOCATION:
BOBBY SEDGWICK
SHELBY BLINDERT

SKETCH:



LEGEND

- NO. 8 X 30" REBAR SET WITH GRANT COUNTY ALUMINUM CAP
- NO. 4 X 24" REBAR SET WITH RED PLASTIC CAP
- x-x- EXISTING FENCE