

# U. S. PUBLIC LAND SURVEY MONUMENT TIE SHEET - GRANT COUNTY WISCONSIN.

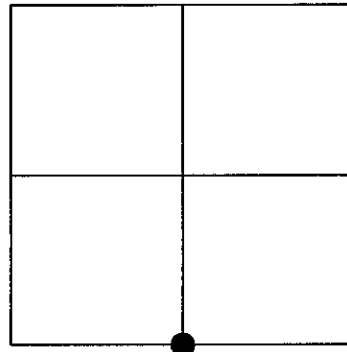
Section # 31 , Town 8 North, Range 2 West, Town of  
Watterstown.

**Certificate**

I, Craig E Hardy, do hereby certify that the corner location on this record was determined by me and/or under my direct supervision and that this U.S. public land survey monument record is correct and complete to the best of my knowledge and belief.

Dated this 21st day of March, 2007.

*Craig E Hardy*  
Craig E. Hardy, WI RLS #2304



**History of Corner Establishment**

Original corner was set in 1832. Original notes call for a 7" Hickory tree, typical life for a hickory tree is 70 years. No evidence could be found of the original tree.

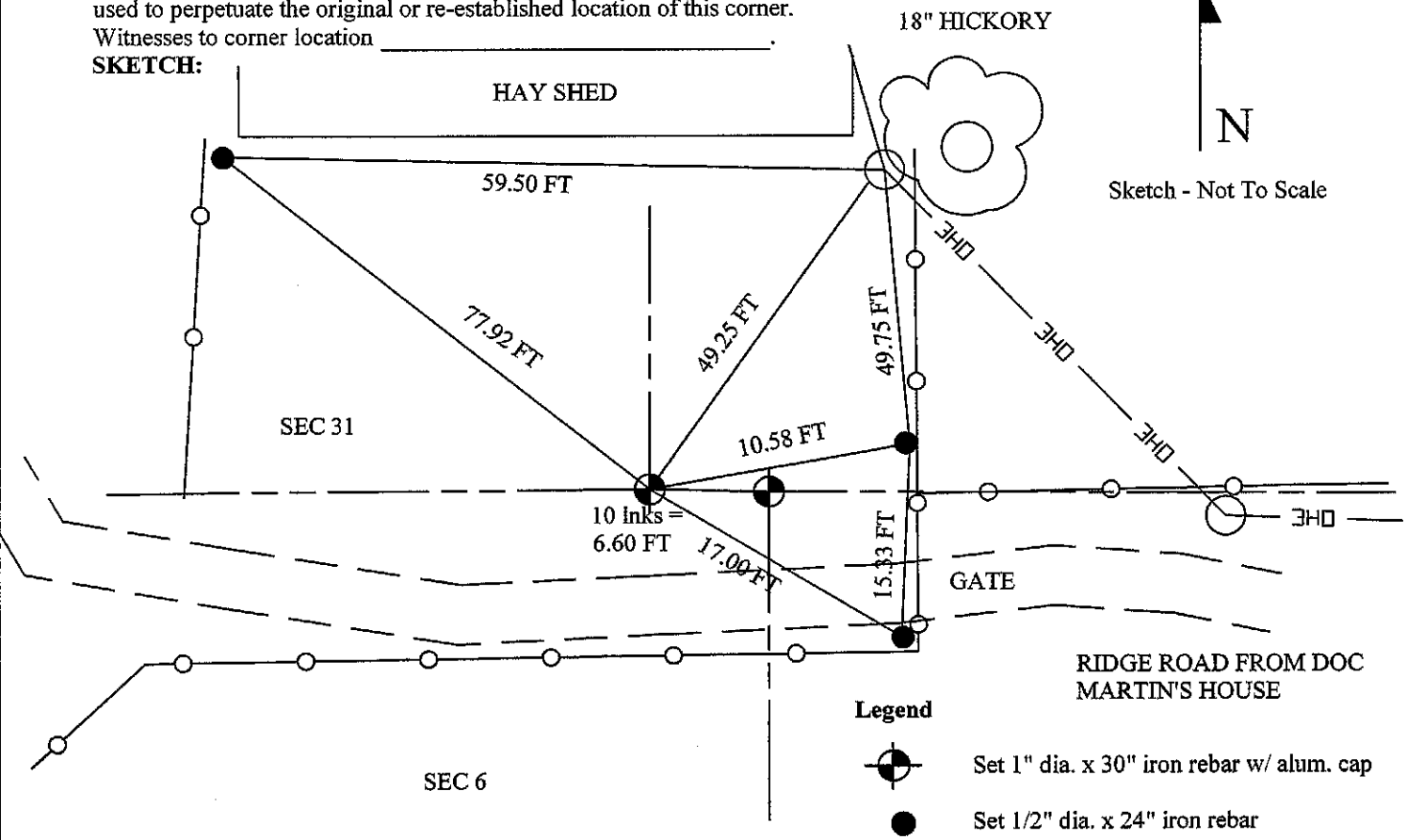
**Description of Corner Evidence Found:**

I re-established this corner based on the occupation of fences between Hardy/Martin in the southwest quarter of section 31 and Baumeister/Nelson in the north half of section 6. I set a new county aluminum monument at this location as acceptance of the occupancy of section 31 and section 6.

**Description of Corner and Witness Monuments, references and accessories used to perpetuate the original or re-established location of this corner.**

Witnesses to corner location \_\_\_\_\_

**SKETCH:**



N  
Sketch - Not To Scale

- Legend**
- Set 1" dia. x 30" iron rebar w/ alum. cap
  - Set 1/2" dia. x 24" iron rebar

Corner Number - 132

# U. S. PUBLIC LAND SURVEY MONUMENT TIE SHEET - GRANT COUNTY WISCONSIN.

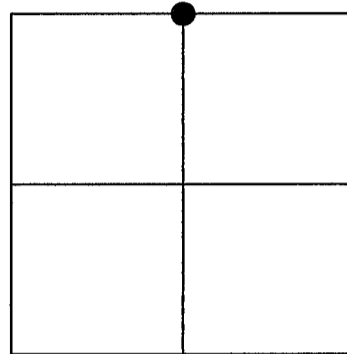
Section # 6 , Town 7 North, Range 2 West, Town of  
Hickory Grove.

**Certificate**

I, Craig E Hardy, do hereby certify that the corner location on this record was determined by me and/or under my direct supervision and that this U.S. public land survey monument record is correct and complete to the best of my knowledge and belief.

Dated this 21st day of March, 2007.

*Craig E Hardy*  
Craig E Hardy, WI-RLS #2304



**History of Corner Establishment**

Original corner was set in 1832. A 7" Dia. hickory tree is called for as the monument for section 31 south quarter corner. The life of a Hickory tree is typically 70 years. I could find no evidence of a hickory tree large enough or old enough to be the original corner for section 31 or 6. No other records exist at the county tax lister's office or county surveyor's office.

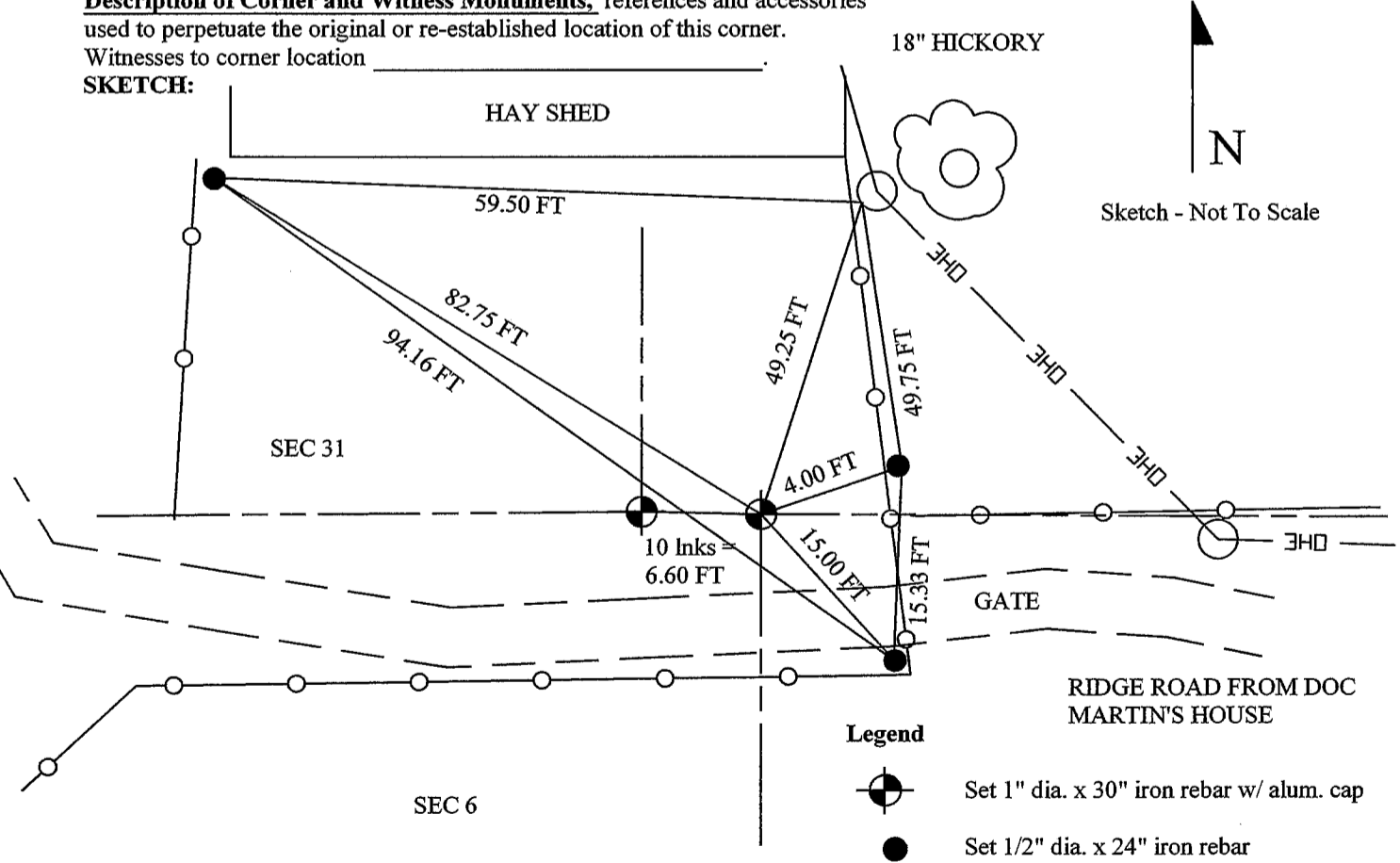
**Description of Corner Evidence Found:**

I set a new county aluminum monument at this location as acceptance of the occupancy of section 31 and section 6 fences, and at the proration of the recorded difference between the southeast section corner of 31 and northeast section corner of 6 as stated in the original surveyor's notes. Section 6 lies 20 Inks east of section 31.

**Description of Corner and Witness Monuments, references and accessories used to perpetuate the original or re-established location of this corner.**

Witnesses to corner location \_\_\_\_\_

**SKETCH:**



Corner Number - 12.