

U. S. PUBLIC LAND SURVEY MONUMENT TIE SHEET - GRANT COUNTY WISCONSIN.

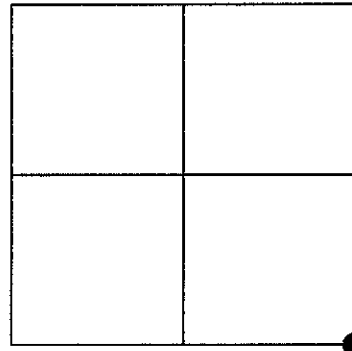
Section # 31, Town 8 North, Range 2 West, Town of
Watterstown.

Certificate

I, Craig E Hardy, do hereby certify that the corner location on this record was determined by me and/or under my direct supervision and that this U.S. public land survey monument record is correct and complete to the best of my knowledge and belief.

Dated this 21st day of March, 2007.

Craig E Hardy
Craig E. Hardy, WI-RLS #2304



History of Corner Establishment

Original corner was set in 1832. No other records exist. The Northeast corner of section 6 is recorded as laying 20 links east of the Southeast corner of section 31.

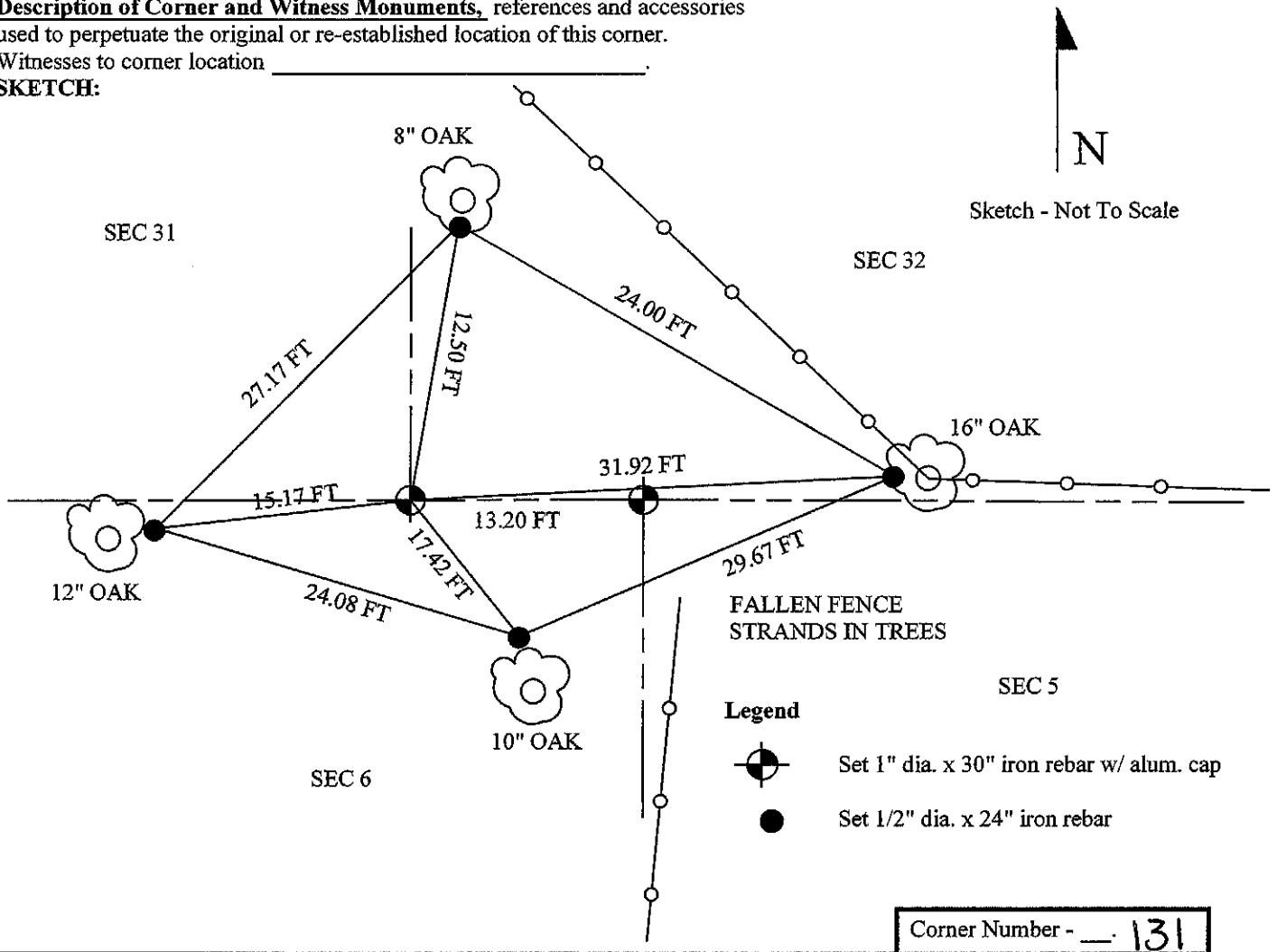
Description of Corner Evidence Found:

I set a new county aluminum monument at this location as acceptance of the extension of the occupancy of section 31 and section 6 fences, and at the recorded difference between the southeast corner of section 31 and northeast corner of section 6 as stated in the original surveyor's notes, which coincides with the property fences.

Description of Corner and Witness Monuments, references and accessories used to perpetuate the original or re-established location of this corner.

Witnesses to corner location _____

SKETCH:



U. S. PUBLIC LAND SURVEY MONUMENT TIE SHEET - GRANT COUNTY WISCONSIN.

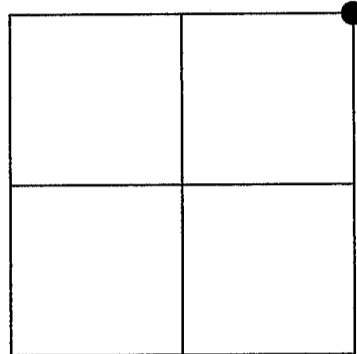
Section # 6 , Town 7 North, Range 2 West, Town of
Hickory Grove.

Certificate

I, Craig E Hardy, do hereby certify that the corner location on this record was determined by me and/or under my direct supervision and that this U.S. public land survey monument record is correct and complete to the best of my knowledge and belief.

Dated this 21st day of March, 2007.

Craig E Hardy
Craig E Hardy, WI PLS #2304



History of Corner Establishment

Original corner was set in 1832. No other records exist. The Northeast corner of section 6 is recorded as laying 20 links east of the Southeast corner of section 31.

Description of Corner Evidence Found:

I set a new county aluminum monument at this location as acceptance of the occupancy of section 31 and section 6 fences, and at the recorded difference between the southeast of 31 and northeast of 6 section corners as stated in the original surveyor's notes, which coincides with the extension of the property fences.

Description of Corner and Witness Monuments, references and accessories used to perpetuate the original or re-established location of this corner.

Witnesses to corner location _____

SKETCH:

