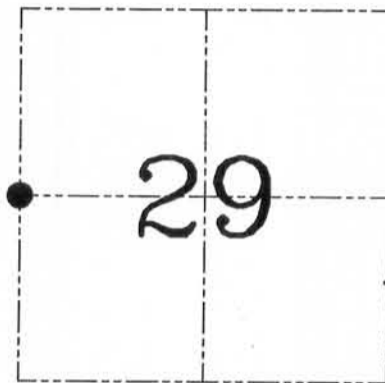


**U.S. PUBLIC LAND SURVEY MONUMENT RECORD – GRANT COUNTY, WI**  
**Section 29, Town 8 North Range 2 West, Town of Watterstown**

CERTIFICATE

I, Larry L. Austin, do hereby certify that the corner location on this record was determined by me and/or under my direct supervision and that this U.S. public land survey monument record is correct and complete to the best of my knowledge and belief.



● = CORNER LOCATION

*Larry L. Austin* 1.28.07  
 Larry L. Austin, S-1903 date

HISTORY OF CORNER ESTABLISHMENT

Corner was originally set in 1833 by Parke.  
 No other record of the corner was found.

DESCRIPTION OF CORNER EVIDENCE FOUND

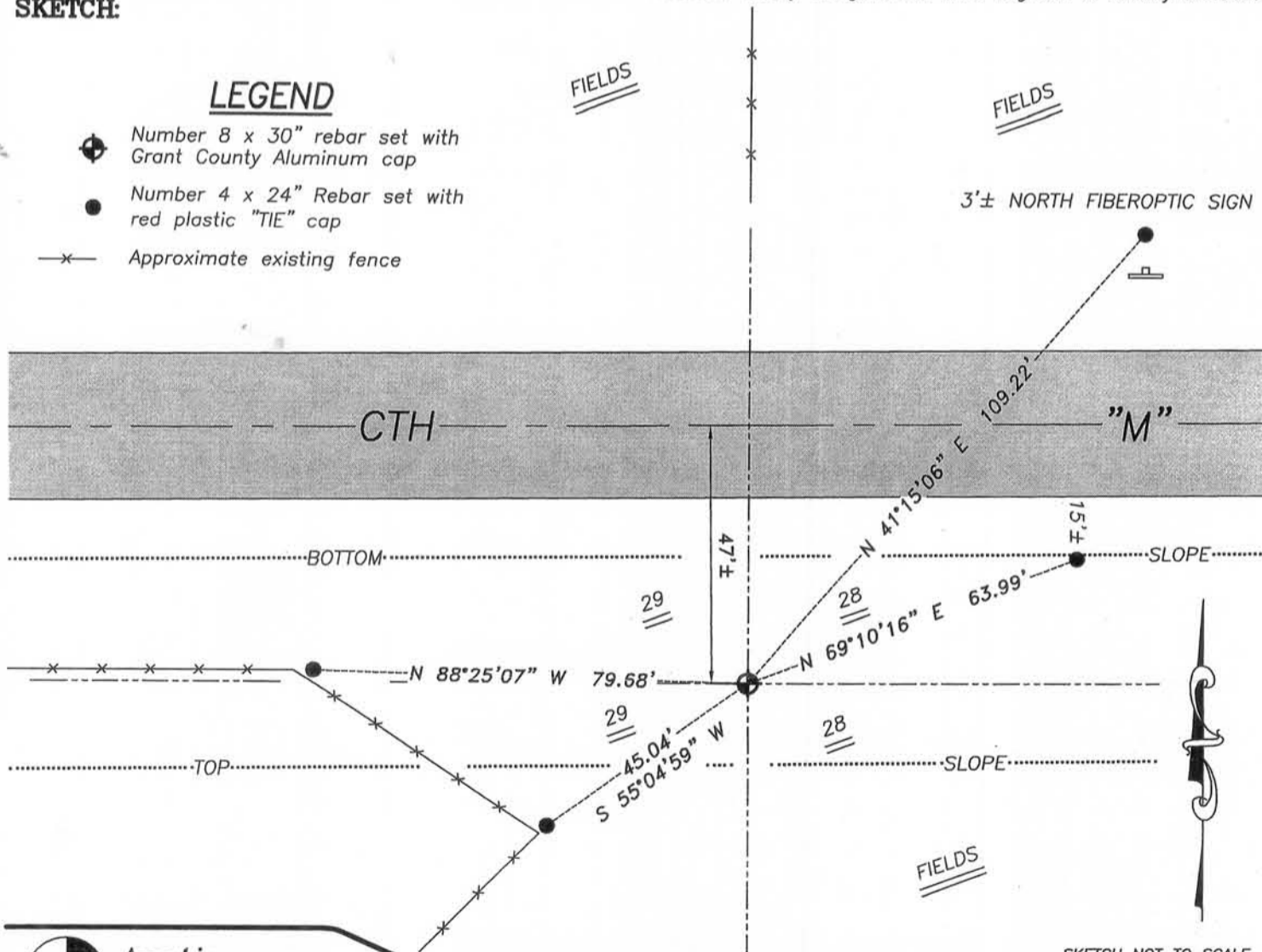
I projected a fence from the North for Easting. Northing was established proportionately between the Northwest and Southwest corners of Section 29. Verified this location using EDM & GPS methods.

DESCRIPTION OF CORNER AND WITNESS MONUMENTS, references and accessories used to perpetuate the original or re-established location of this corner. Witnesses to corner location Bobby Sedgwick & Brad Digman & Shelby Blindert

**SKETCH:**

LEGEND

- Number 8 x 30" rebar set with Grant County Aluminum cap
- Number 4 x 24" Rebar set with red plastic "TIE" cap
- x— Approximate existing fence



SKETCH NOT TO SCALE



**Austin Engineering LLC**

4211 HWY 81 E, LANCASTER, WI 53813  
 PHONE 608-723-6363 FAX 608-723-6702

JOB NUMBER 06S323  
 FIELDBOOK: TDSR, 2608  
 G:\T8NR2W\27  
 H:\TIE\T8NR2W\95

DRAWN BY: SW AUSTIN  
 APPROVED: LL AUSTIN