

U.S. PUBLIC LAND SURVEY MONUMENT RECORD – GRANT COUNTY, WI
Section 29, Town 8 North Range 2 West, Town of Watterstown

CERTIFICATE

I, Larry L. Austin, do hereby certify that the corner location on this record was determined by me and/or under my direct supervision and that this U.S. public land survey monument record is correct and complete to the best of my knowledge and belief.



● = CORNER LOCATION

Larry L. Austin 1.28.07
 Larry L. Austin, S-1903 date

HISTORY OF CORNER ESTABLISHMENT

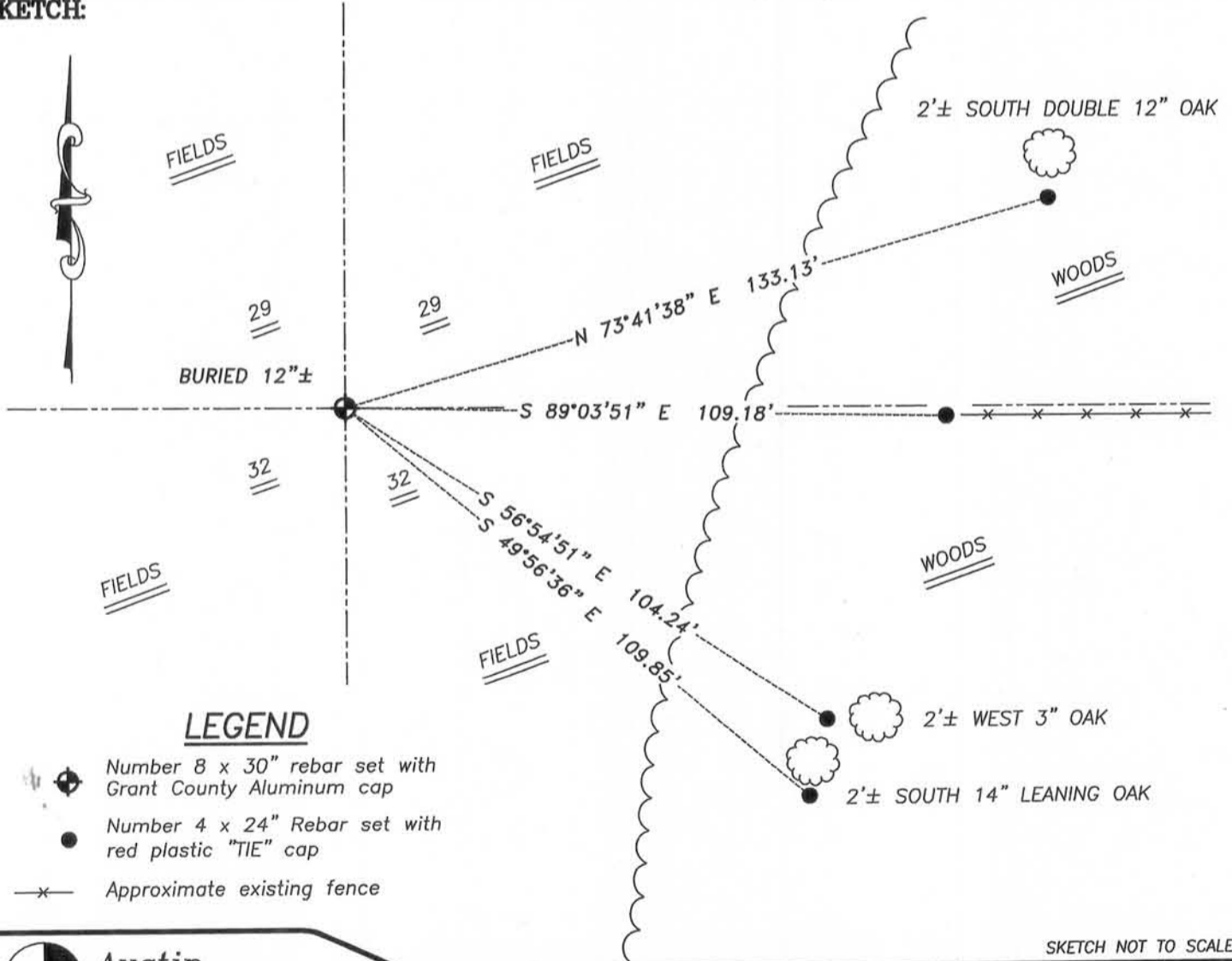
Corner was originally set in 1833 by Parke. In 2004 Hardy filed a tie sheet for this corner. No other record of the corner was found.

DESCRIPTION OF CORNER EVIDENCE FOUND

Hardy's tie sheet appeared to be for a different corner. I reset the corner proportionately between the Southwest and Southeast corners of Section 29. Northing was established by a projection of a fence from the East. Verified this location using EDM & GPS corners.

DESCRIPTION OF CORNER AND WITNESS MONUMENTS, references and accessories used to perpetuate the original or re-established location of this corner. Witnesses to corner location Bobby Sedgwick & Brad Digman & Shelby Blindert

SKETCH:



LEGEND

- Number 8 x 30" rebar set with Grant County Aluminum cap
- Number 4 x 24" Rebar set with red plastic "TIE" cap
- x- Approximate existing fence

SKETCH NOT TO SCALE



Austin Engineering LLC

4211 HWY 81 E, LANCASTER, WI 53813
 PHONE 608-723-6363 FAX 608-723-6702

JOB NUMBER 06S323
 FIELDBOOK: TDSR, 2608
 G:\T8NR2W\27
 H:\TIE\T8NR2W\110

DRAWN BY: SW AUSTIN
 APPROVED: LL AUSTIN