

Survey Monument Record

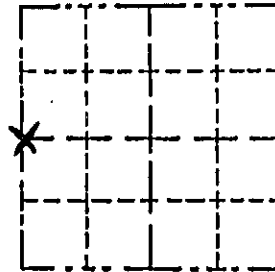
TYPE OF MONUMENT 1" X 24" IRON PIPE  
 STATE PLANE COORDINATES: N \_\_\_\_\_  
 E \_\_\_\_\_  
 ELEVATION — M.S.L. DATUM: \_\_\_\_\_  
 THETA ANGLE: \_\_\_\_\_  
 FIELD BOOK: \_\_\_\_\_  
 PAGE \_\_\_\_\_

CORNER NO. \_\_\_\_\_  
 SECTION 27  
 TOWN 8 NORTH  
 RANGE 2 WEST

BASIS FOR MONUMENT LOCATION

(Use reverse side if necessary)

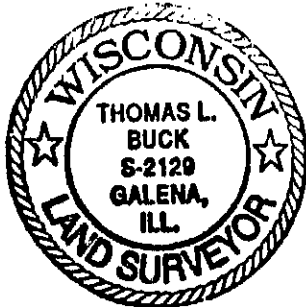
Show info such as: History of corner, with reference to Vol. and pg., dates, surveyor; exact description of monument replaced; if location computed, by taped or EDM traverse; landowner, remarks, etc.



LOCATION  
 (Indicated by "X")

- FOUND PERPETUATED LOCATION
- OBLITERATED EVIDENCE LOCATION
- LOST CORNER (RESTORED BY PROPORTIONATE METHODS)

I FOUND AND EXCEPTED A 1" X 24" IRON PIPE SET BY HOMER RALPH, GRANT COUNTY SURVEYOR IN 1974 AFTER AN E.D.M. TRAVERSE OF SECTION 27 AND G.P.S OBSERVATION.



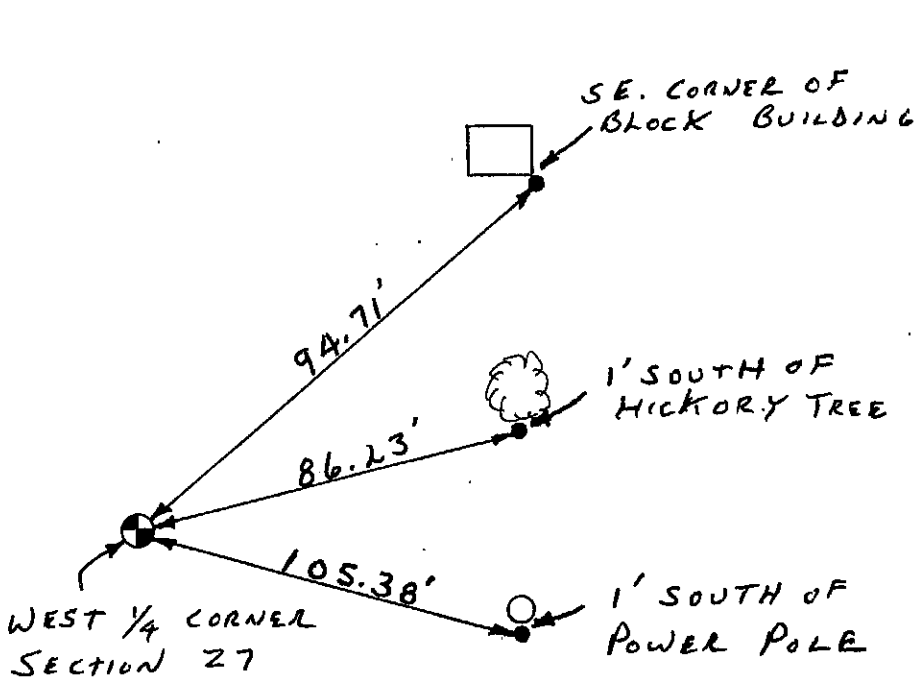
CERTIFIED CORRECT TO THE BEST OF MY KNOWLEDGE AND BELIEF

Thomas L. Buck  
 Registered Land Surveyor

DATE: 10/13/98

TIE SKETCH

Show at least three (3) ties and monument



NO SCALE  
 LEGEND

- ⊙ = 1" X 24" IRON PIPE
- = 1/2" IRON ROD