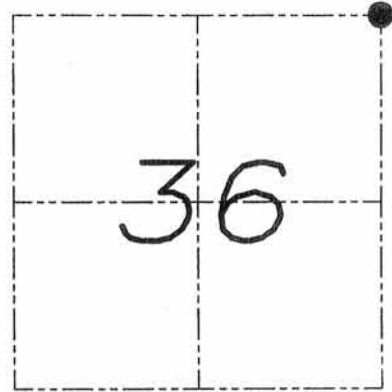


# U.S. PUBLIC LAND SURVEY MONUMENT RECORD

Section 36, Town 8 North Range 2 West, Town of Watterstown, Grant County, Wisconsin

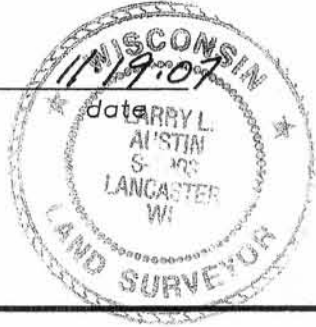
## CERTIFICATE

I, Larry L. Austin, do hereby certify that the corner location on this record was determined by me and/or under my direct supervision and that this U.S. public land survey monument record is correct and complete to the best of my knowledge and belief.



● = CORNER LOCATION

*Larry L. Austin*  
Larry L. Austin, S-1903



## HISTORY OF CORNER

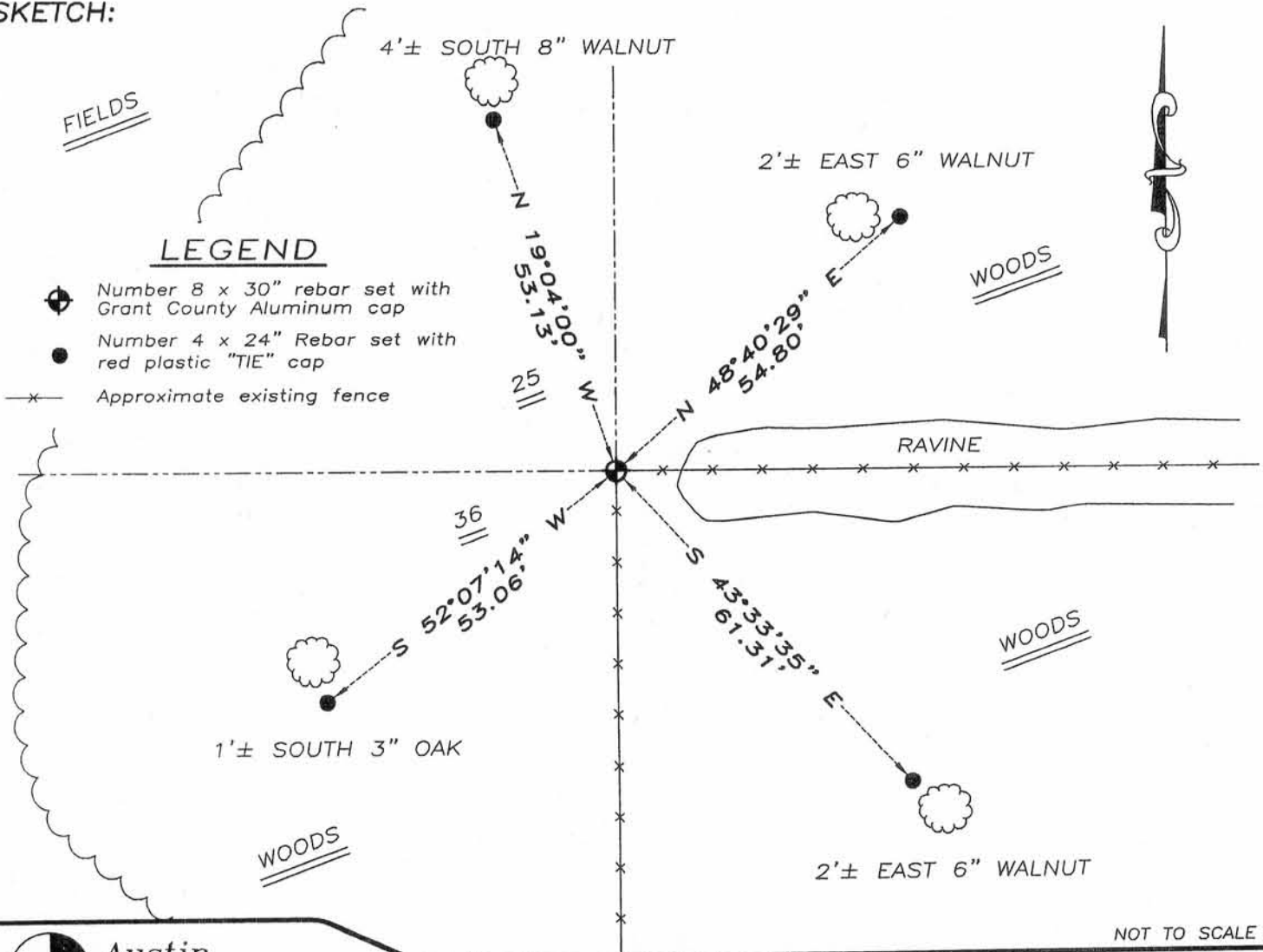
Corner was originally set by Lyon.  
No other record of the corner was found.

## CORNER EVIDENCE FOUND

I reset the corner at an occupied fence intersection.  
Verified this location using EDM & GPS methods.

DESCRIPTION OF CORNER AND WITNESS MONUMENTS, references and accessories used to perpetuate the original or re-established location of this corner. Witnesses to monument location Bobby Sedgwick & Brad Digman & Shane Austin

## SKETCH:



NOT TO SCALE



**Austin Engineering LLC**

4211 HWY 81 E, LANCASTER, WI 53813  
PHONE 608-723-6363 FAX 608-723-6702

JOB NUMBER 07S232  
FIELDBOOK: TDSR, 2708  
G:\T8NR2W\27  
H:\TIE\T8NR2W\101

DRAWN BY: SW AUSTIN  
APPROVED: LL AUSTIN