

U.S. PUBLIC LAND SURVEY MONUMENT RECORD - GRANT COUNTY, WI

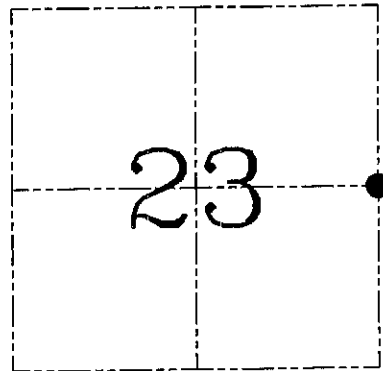
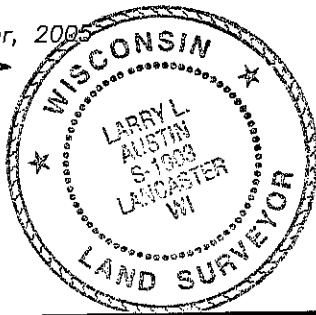
Section 23, Town 8 North Range 2 West, Town of Watterstown

CERTIFICATE

I, Larry L. Austin, do hereby certify that the corner location on this record was determined by me and/or under my direct supervision and that this U.S. public land survey monument record is correct and complete to the best of my knowledge and belief.

Dated this 29th day of November, 2005

Larry L. Austin
Larry L. Austin S-1903



● = CORNER LOCATION

HISTORY OF CORNER ESTABLISHMENT

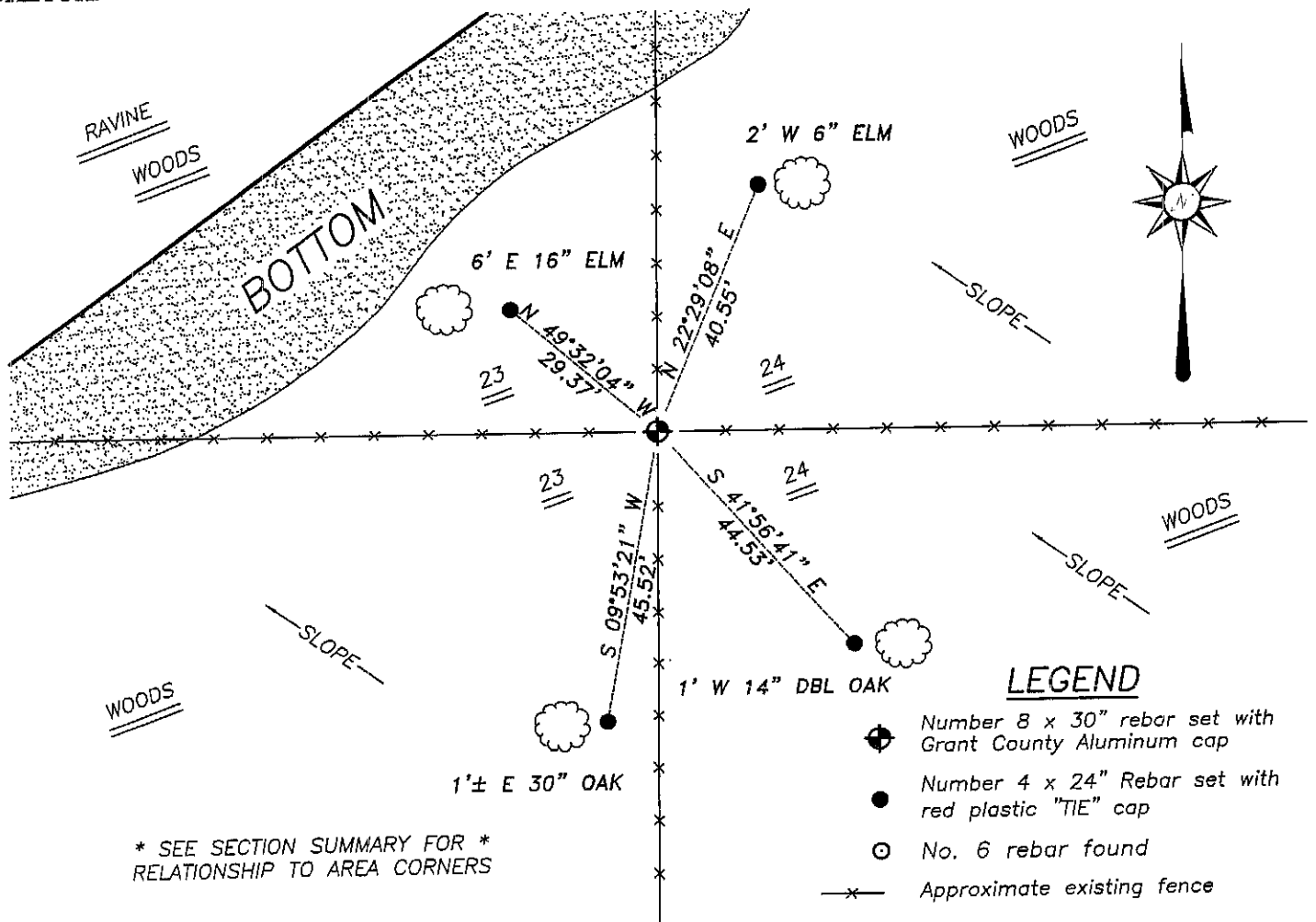
Corner was originally set in 1833 by Parke. In 1892 Sampson found both original bearing trees. No other record of the corner was found

DESCRIPTION OF CORNER EVIDENCE FOUND

I found an existing 4 way fence and accepted it's location after an EDM & GPS traverse of the area.

DESCRIPTION OF CORNER AND WITNESS MONUMENTS, references and accessories used to perpetuate the original or re-established location of this corner. Witnesses to corner location Brad Digman & Shane Austin.

SKETCH:



SKETCH NOT TO SCALE



Austin Engineering LLC

4211 HWY 81 E, LANCASTER, WI 53813
PHONE 608-723-6363 FAX 608-723-6702

JOB NUMBER 05S281
FIELDBOOK: 2511
G:\T8NR2W\27
H:\TIE\T8NR2W\79

DRAWN BY: ML DIGMAN
APPROVED: LL AUSTIN