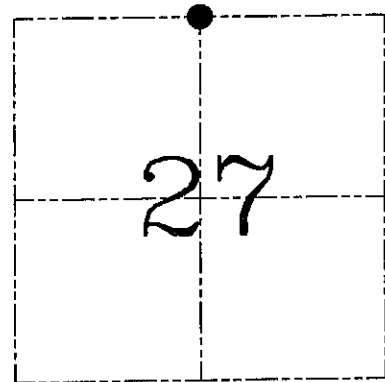
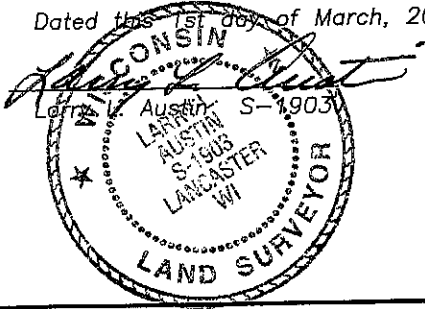


U.S. PUBLIC LAND SURVEY MONUMENT RECORD – GRANT COUNTY, WI
Section 27, Town 8 North Range 2 West, Town of Watterstown

CERTIFICATE

I, Larry L. Austin, do hereby certify that the corner location on this record was determined by me and/or under my direct supervision and that this U.S. public land survey monument record is correct and complete to the best of my knowledge and belief.

Dated this 1st day of March, 2004



● = CORNER LOCATION

HISTORY OF CORNER ESTABLISHMENT

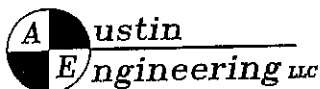
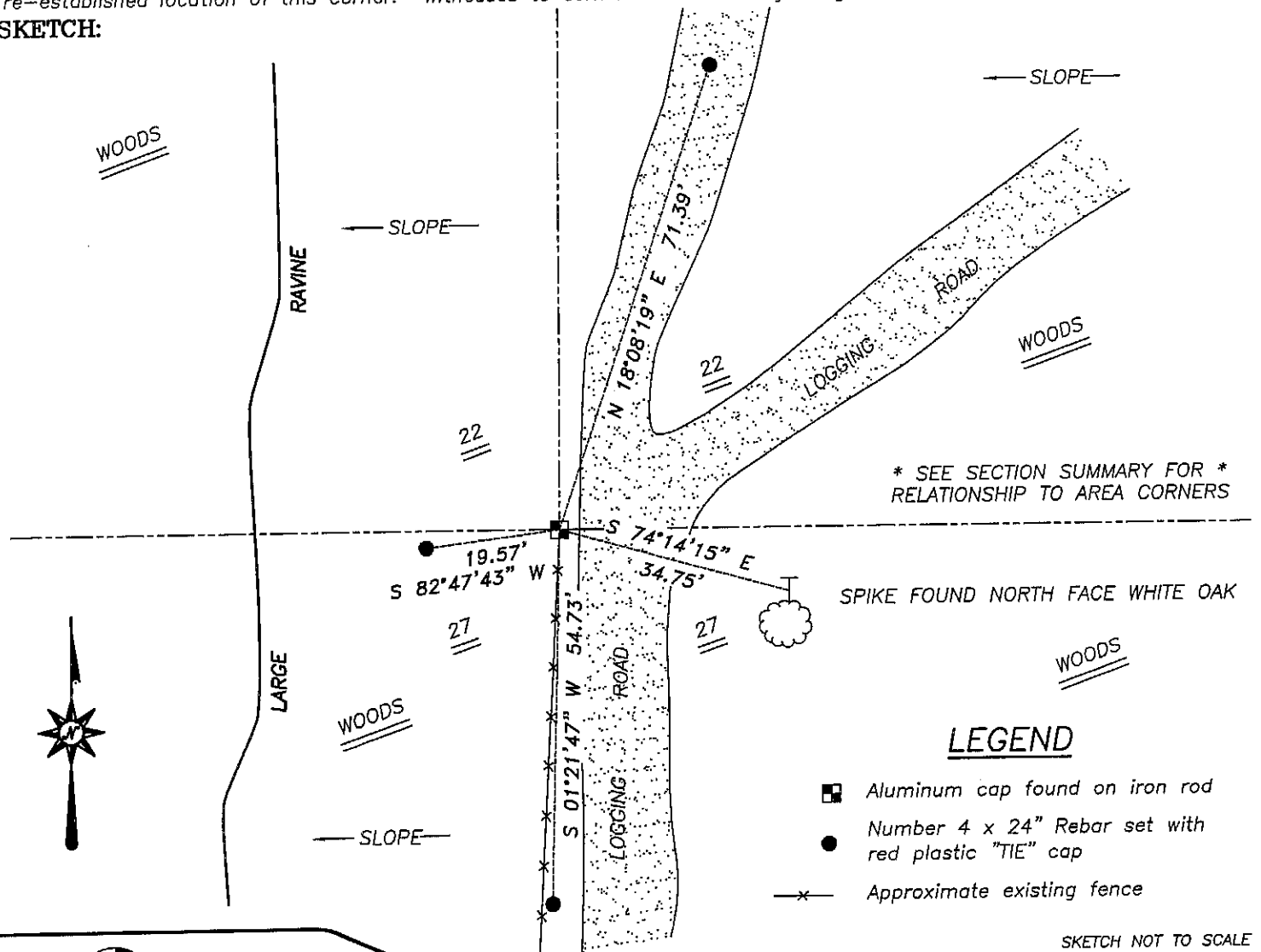
Corner was originally set in 1833 by Harvey Parke. In 1880 Barber found both original trees. In 1910 A.W. Appleby found both trees. In 1973 Homer Ralph set an Aluminum cap on an iron rod at this location. In 1998 Thomas Buck found this monument.

DESCRIPTION OF CORNER EVIDENCE FOUND

I was unable to locate any evidence of the original bearing trees. I found an Aluminum cap on an iron rod. I accepted it's location after an EDM & GPS traverse of the area.

DESCRIPTION OF CORNER AND WITNESS MONUMENTS, references and accessories used to perpetuate the original or re-established location of this corner. Witnesses to corner location Bobby Sedgwick & Shane Austin & Brad Digman

SKETCH:



4211 HWY 81 E, LANCASTER, WI 53813
 PHONE 608-723-6363 FAX 608-723-6702

JOB NUMBER 03S305
 FIELDBOOK: TSDR, 2314
 G:\T8NR2W\27
 H:\TIE\T8NR2W\86

DRAWN BY: SW AUSTIN
 APPROVED: LL AUSTIN