

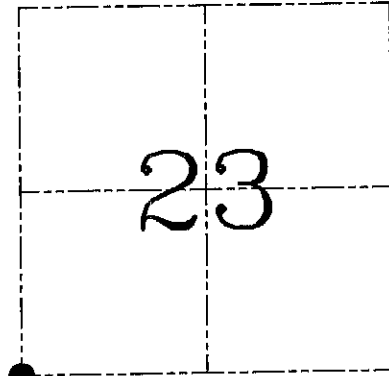
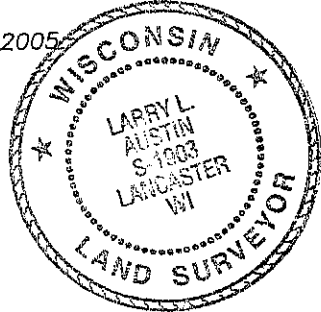
**U.S. PUBLIC LAND SURVEY MONUMENT RECORD - GRANT COUNTY, WI**  
**Section 22, Town 8 North Range 2 West, Town of Watterstown**

CERTIFICATE

I, Larry L. Austin, do hereby certify that the corner location on this record was determined by me and/or under my direct supervision and that this U.S. public land survey monument record is correct and complete to the best of my knowledge and belief.

Dated this 29th day of November, 2005

*Larry L. Austin*  
 Larry L. Austin S-1903



● = CORNER LOCATION

HISTORY OF CORNER ESTABLISHMENT

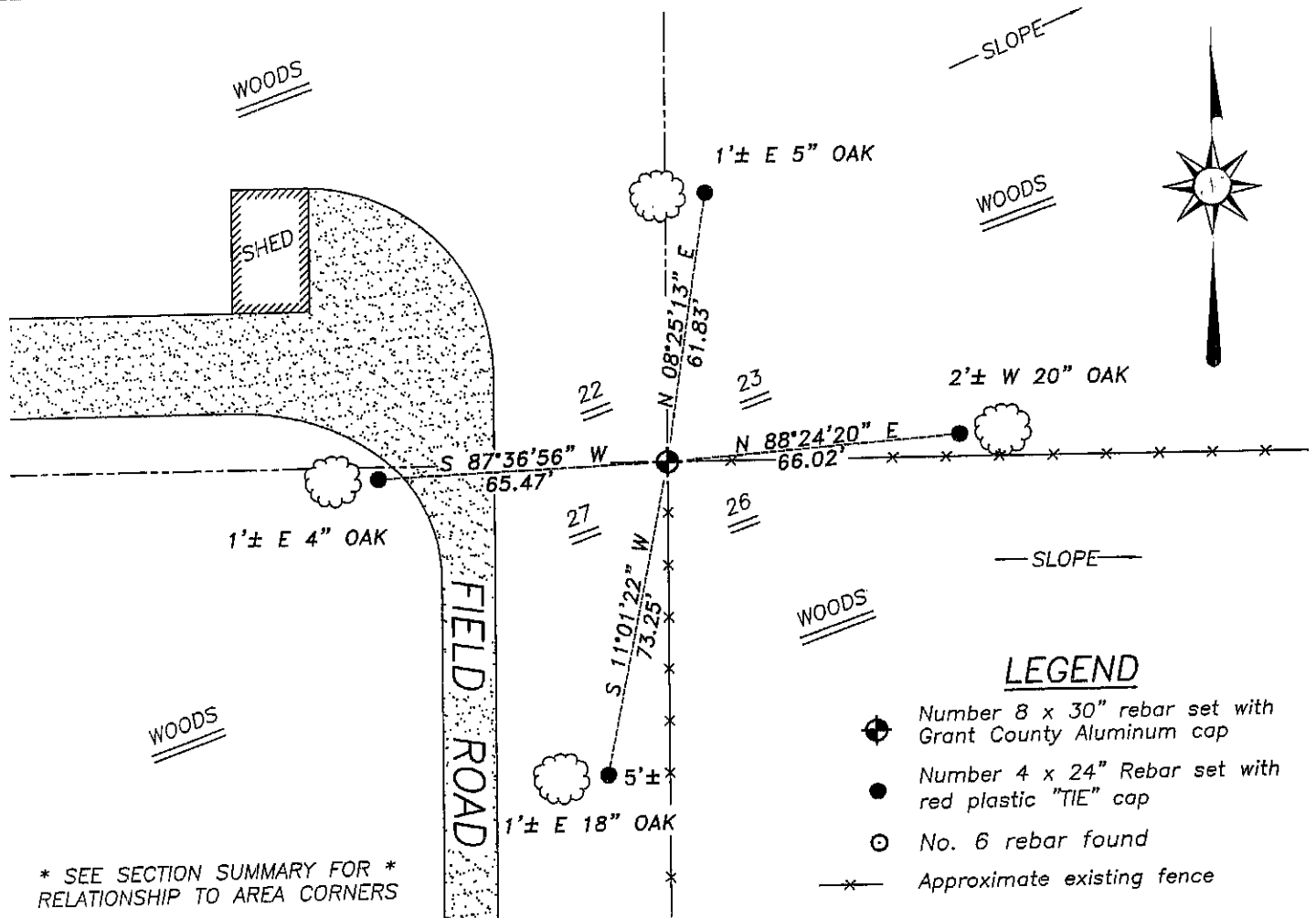
Corner was originally set in 1833 by Parke. Homer Ralph found an iron stake at this location. No other record of the corner was found.

DESCRIPTION OF CORNER EVIDENCE FOUND

I found an occupied fence corner and accepted it's location after and EDM & GPS traverse of the area.

DESCRIPTION OF CORNER AND WITNESS MONUMENTS, references and accessories used to perpetuate the original or re-established location of this corner. Witnesses to corner location Brad Digman & Shane Austin.

**SKETCH:**



\* SEE SECTION SUMMARY FOR \*  
 RELATIONSHIP TO AREA CORNERS

**LEGEND**

- (with cross) Number 8 x 30" rebar set with Grant County Aluminum cap
- (solid) Number 4 x 24" Rebar set with red plastic "TIE" cap
- (with cross) No. 6 rebar found
- x- Approximate existing fence

SKETCH NOT TO SCALE



**Austin**  
**Engineering LLC**

4211 HWY B1 E, LANCASTER, WI 53813  
 PHONE 608-723-6363 FAX 608-723-6702

JOB NUMBER 05S281  
 FIELDBOOK: 2511  
 G:\T8NR2W\27  
 H:\TIE\T8NR2W\85

DRAWN BY: ML DIGMAN  
 APPROVED: LL AUSTIN