

CRAIG :
3 PAGES FAXED

GRANT COUNTY CERTIFIED LAND CORNER

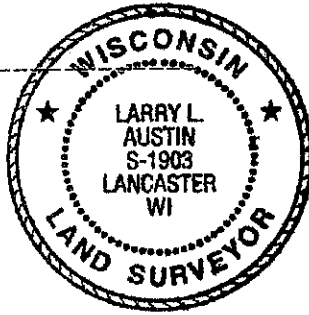
CORNER NUMBER 75

CERTIFICATE:

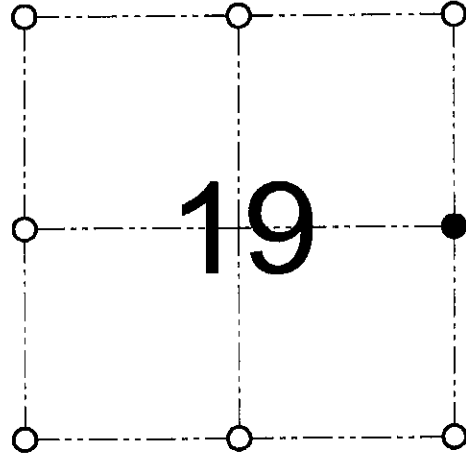
I, Larry L. Austin, do hereby certify that on the 24th day of August, 2000, I found no evidence of the East 1/4 corner of Section 19, Town 8 North, Range 2 West, of the 4th Principal Meridian, and I re-established said corner according to the Wisconsin statutes as shown and described hereon.

Dated this 2nd day of February, 2001

Larry L. Austin
Larry L. Austin S-1903



SEAL



● = CORNER LOCATION

EAST 1/4 CORNER OF
SECTION 19, T 8 N R 2 W
TOWN OF WATTERSTOWN

HISTORY OF ORIGINAL CORNER ESTABLISHMENT:

Corner was originally set in 1833 by Harvey Parke. In 1992 Terry Cornell found an existing Iron pipe. No other record of the corner was found.

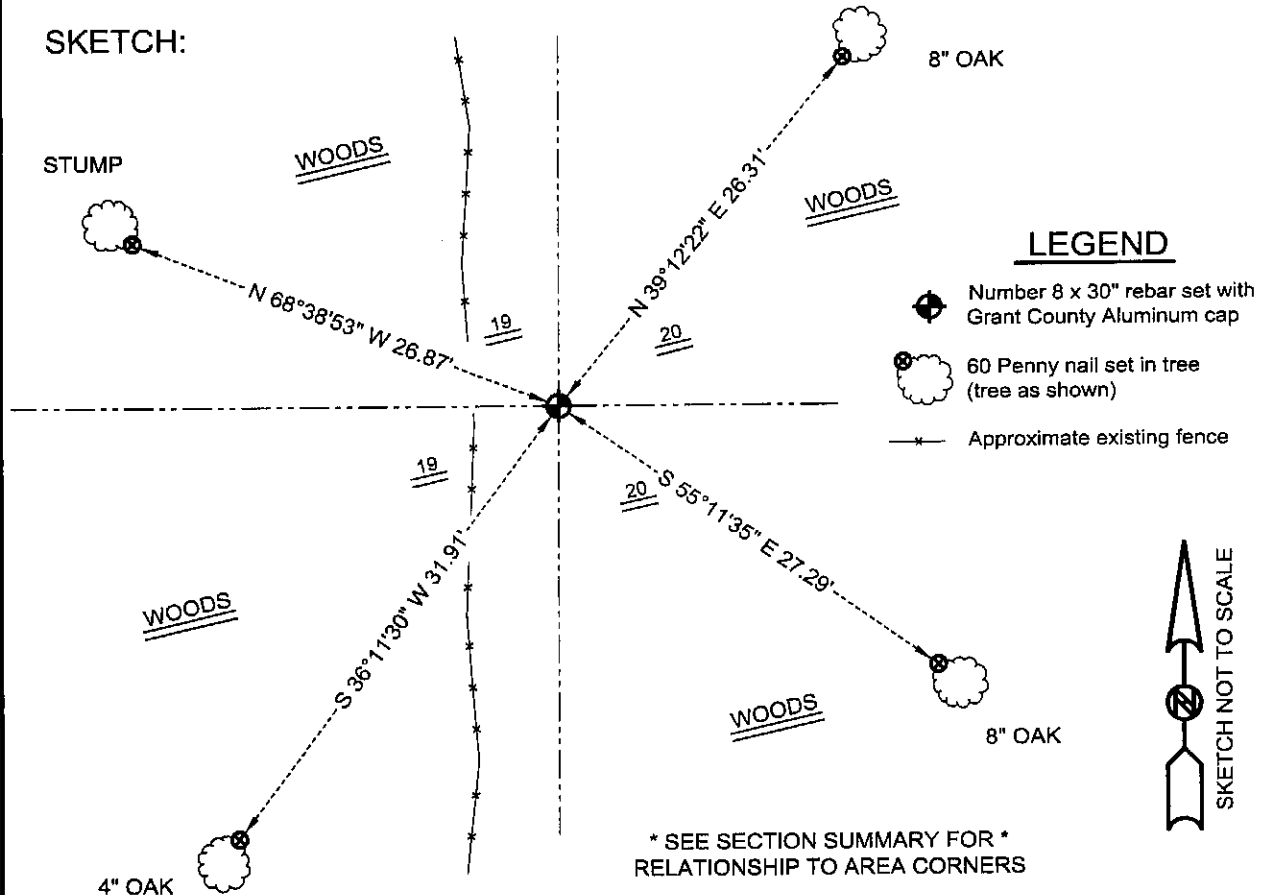
DESCRIPTION OF CORNER EVIDENCE FOUND:

I was unable to locate the Iron pipe. I did find a steel fence post at this location. I reset the corner according to Cornell's various plats. Verified this location using EDM & GPS methods.

DESCRIPTION OF CORNER AND WITNESS MONUMENTS, references and accessories used to perpetuate the original or re-established location of this corner

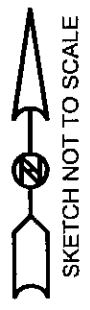
WITNESS TO THE CORNER LOCATION: SHELBY BLINDERT & BOBBY SEDGWICK

SKETCH:



LEGEND

- Number 8 x 30" rebar set with Grant County Aluminum cap
- 60 Penny nail set in tree (tree as shown)
- Approximate existing fence



* SEE SECTION SUMMARY FOR *
RELATIONSHIP TO AREA CORNERS

AUSTIN ENGINEERING, LLC
4211 HWY 81 E, LANCASTER, WI 53813
PHONE 608-723-6363 FAX 608-723-6702

FIELDBOOK: SDR33, 2027
G:\T8NR2W\19
C:\SC14\SWA\TIE\T8NR2W\75

DRAWN BY: SW AUSTIN
APPROVED: LL AUSTIN
CREW: BS - SB - SA - TF