

GRANT COUNTY CERTIFIED LAND CORNER

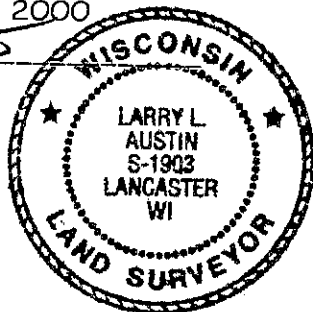
CORNER NUMBER 92

CERTIFICATE:

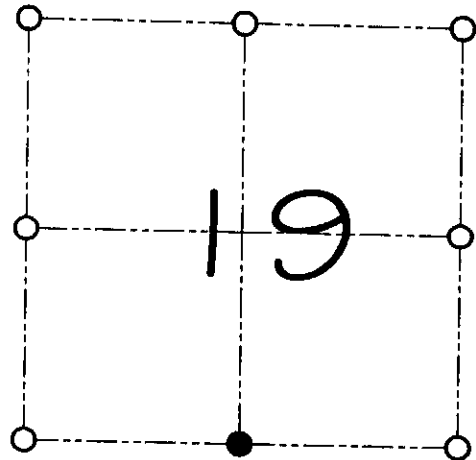
I, Larry L. Austin, do hereby certify that on the 22nd day of March, 2000, I found evidence of the South 1/4 corner of Section 19, Town 8 North, Range 2 West, of the 4th Principal Meridian, and I re-established said corner according to the Wisconsin statutes as shown and described hereon.

Dated this 23rd day of June, 2000

Larry L. Austin
Larry L. Austin S-1903



SEAL



● = CORNER LOCATION

SOUTH 1/4 CORNER OF
SECTION 19, T 8 N R 2 W
TOWN OF WATTERSTOWN

HISTORY OF ORIGINAL CORNER ESTABLISHMENT:

Corner was originally set in 1833 by Harvey Parke.
In 1992 Terry Cornell found a stone not of record.

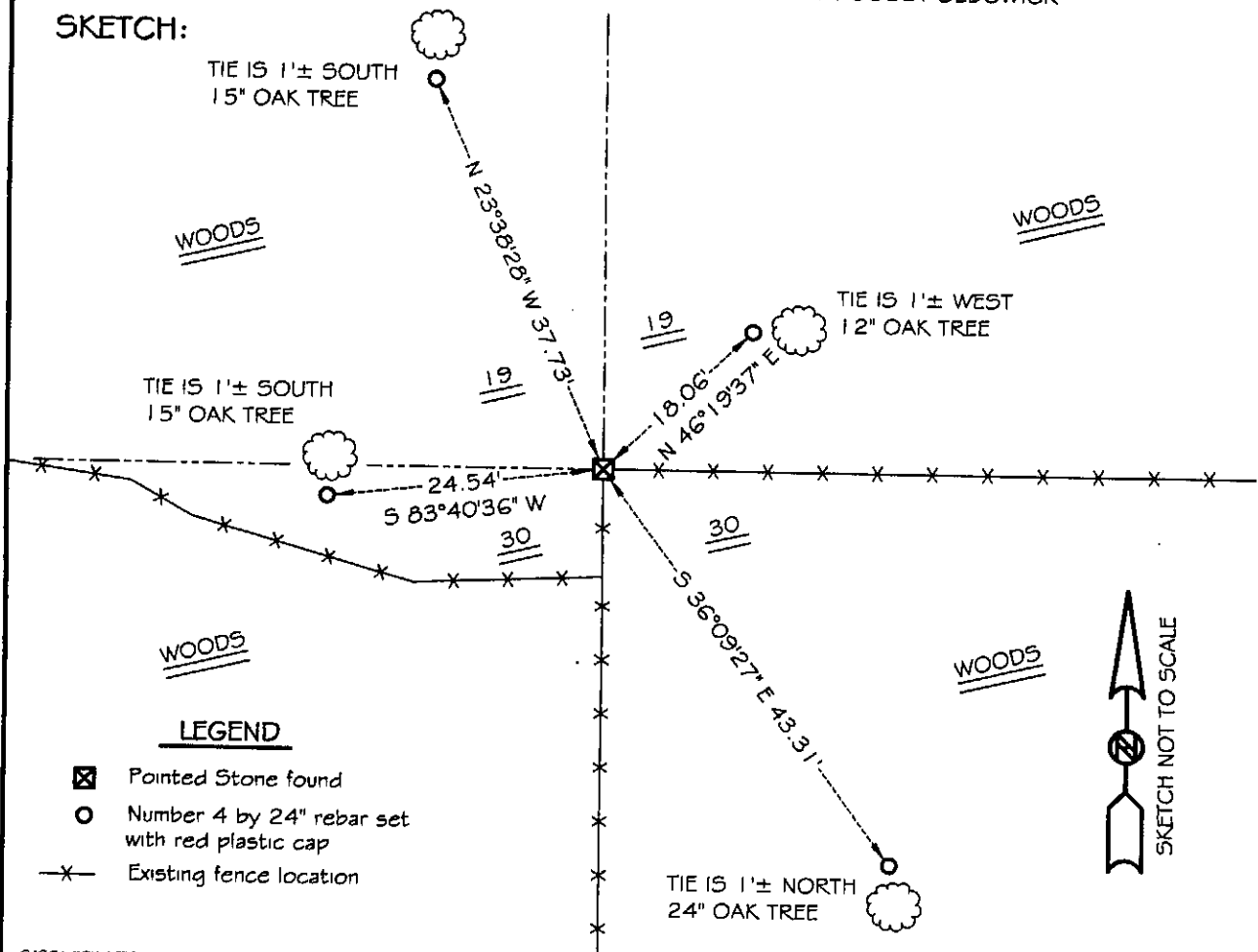
DESCRIPTION OF CORNER EVIDENCE FOUND:

I found the existing pointed stone at an occupied fence corner and accepted it's location after an EDM & GPS traverse of the area.

DESCRIPTION OF CORNER AND WITNESS MONUMENTS, references and accessories used to perpetuate the original or re-established location of this corner

WITNESS TO THE CORNER LOCATION: SHANE AUSTIN & BOBBY SEDGWICK

SKETCH:



LEGEND

- ☒ Pointed Stone found
- Number 4 by 24" rebar set with red plastic cap
- X— Existing fence location