

GRANT COUNTY CERTIFIED U.S. PUBLIC LAND SURVEY MONUMENT RECORD

DATUM: NAD 83 (1991)	GRANT COUNTY COORDINATES	
CONTROL: COMBINATION OF GPS AND CONVENTIONAL FIELD CONTROL	NORTH	640962.35'
	EAST	835821.97'

*THE WEST QUARTER CORNER
OF SECTION 17, T8N, R2W,
TOWN OF WATTERSTOWN,
GRANT COUNTY, WISCONSIN.*

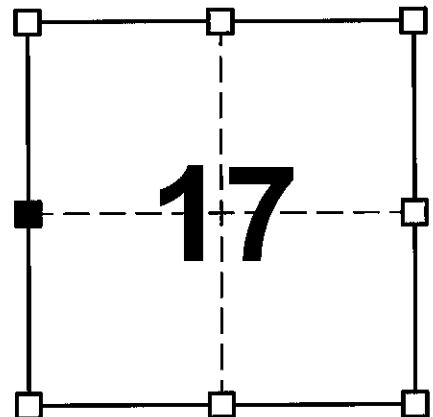
(A) IDENTIFY THE CORNER BY REFERENCE
TO THE U.S. PUBLIC LAND SURVEY SYSTEM

■ = CORNER MONUMENT RESTORED

WITNESS TO CORNER LOCATION:

TODD T. RUMMLER

TERRY M. PREM

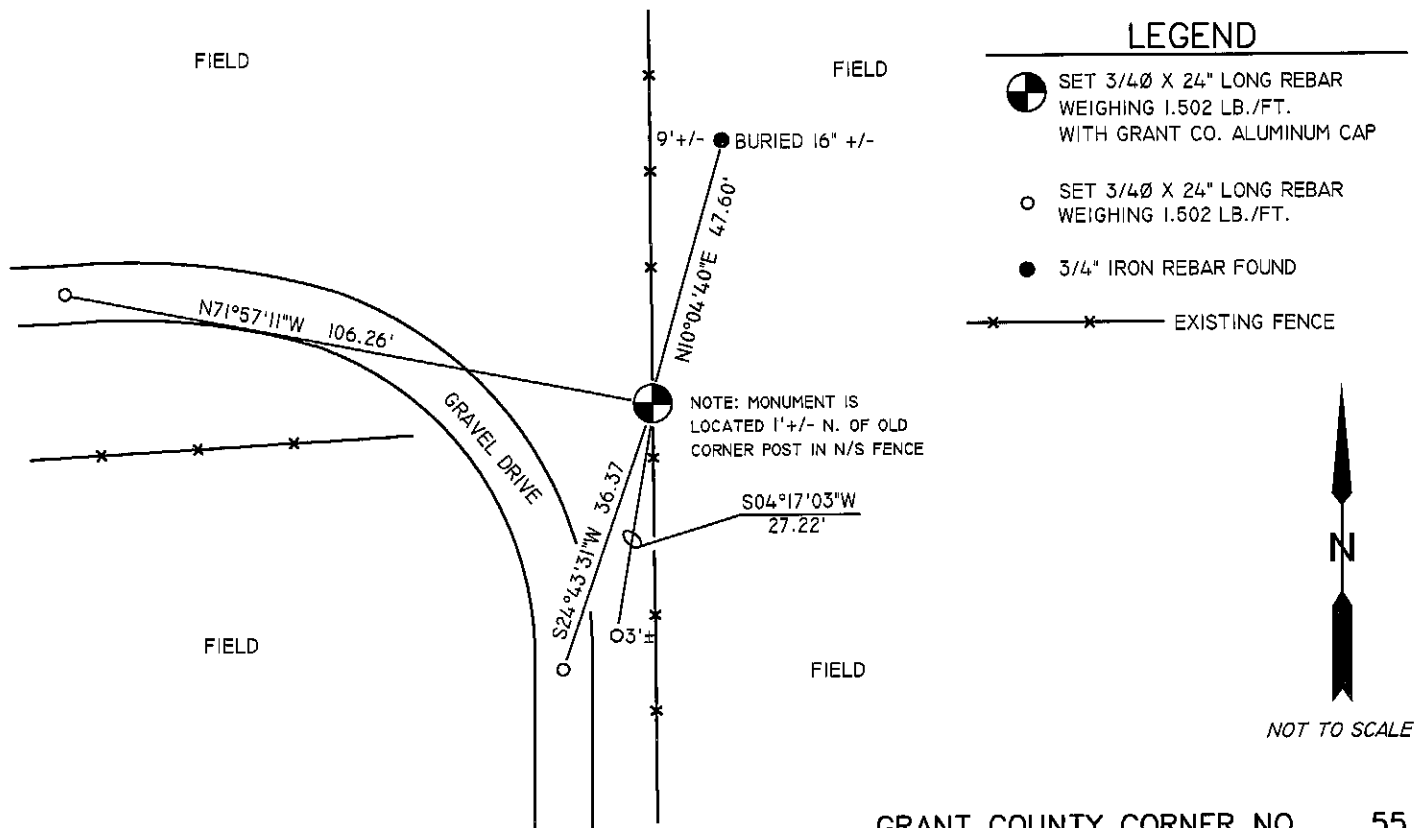


SECTION 17
TOWN 8 NORTH
RANGE 2 WEST

(B) DESCRIBE ANY RECORD EVIDENCE, MONUMENT EVIDENCE, OCCUPATIONAL EVIDENCE, TESTIMONIAL EVIDENCE OR ANY OTHER MATERIAL EVIDENCE YOU CONSIDERED, AND WHETHER THE MONUMENT WAS FOUND OR PLACED.

THE 3/4" IRON ROD THAT PREVIOUSLY MARKED THIS CORNER HAS BEEN REMOVED. I RESET THIS CORNER FROM TIES TO A SURVEY DONE BY MR. JOHN HALVERSON, R.L.S.-1318 FOR KEVIN AND JOAN EVANICH DATED FEBRUARY 18, 2004 AND FROM ONE REMAINING TIE ORGINALLY PLACED BY MATTHEW JANIAK AND SHOWN ON HIS TIE SHEET DATED AUGUST 26, 1987. I SET A 3/4"Ø X 24" REBAR WITH GRANT COUNTY ALUMINUM CAP AND THREE NEW TIES.

(C) IN THE PLAN VIEW DRAWING BELOW, PROVIDE REFERENCE TIES TO AT LEAST 4 WITNESS MONUMENTS OR, IF THE LOCATION IS WITHIN A MUNICIPALITY, TO AT LEAST 2 WITNESS MONUMENTS. (WITNESS MONUMENTS SHALL BE MADE ON CONCRETE, NATURAL STONE, IRON, OR OTHER EQUALLY DURABLE MATERIAL.) DESCRIBE WITNESS MONUMENTS.



(D) DESCRIBE ANY MATERIAL DISCREPANCY BETWEEN THE LOCATION OF THE CORNER AS RESTORED OR REESTABLISHED AND THE LOCATION OF THAT CORNER AS PREVIOUSLY RESTORED OR REESTABLISHED BY DISTANCE AND DIRECTION. SHOW THE DISCREPANCY ON THE PLAN VIEW DRAWING UNDER (C), ABOVE. SHOW THE DISTANCES BETWEEN THE CORNER AS PREVIOUSLY RESTORED OR REESTABLISHED AND (1) THE CORNER AS RESTORED OR REESTABLISHED, AND (2) TO AT LEAST 2 OF THE WITNESS MONUMENTS AS SHOWN ON THE DRAWING IN (C), ABOVE.

NONE.

(E) WAS THE CORNER RESTORED THROUGH ACCEPTANCE OF (1) AN OBLITERATED EVIDENCE LOCATION, OR (2) A FOUND PERPETUATED LOCATION?

A FOUND PERPETUATED CORNER

(F & G) WAS THE CORNER REESTABLISHED THROUGH LOST CORNER PROPORTIONATE METHODS? IF SO SHOW THE METHOD, INCLUDING THE DIRECTION AND DISTANCED TO OTHER PUBLIC LAND SURVEY CORNERS USED AS EVIDENCE OR USED FOR PROPORTIONING IN DETERMINING THE CORNER LOCATION.

NO.

AFFIX LAND SURVEYOR SEAL

(H) I, TODD T. RUMMLER, RLS-2443 CERTIFY THAT THE CORNER LOCATION SHOWN ON THIS RECORD WAS DETERMINED BY ME OR UNDER MY DIRECTION AND CONTROL AND THAT THIS U.S. PUBLIC LAND SURVEY MONUMENT RECORD IS CORRECT AND COMPLETE TO THE BEST OF MY KNOWLEDGE AND BELIEF.



SIGNATURE

AUGUST 12, 2008

DATE



AUG 28 1987

RECEIVED

GRANT COUNTY GOVERNMENT CORNER RECORD

W 1/4 CORNER, SECTION 17, TOWNSHIP 8 NORTH, RANGE 2 WEST,
TOWN, CITY OR VILLAGE OF WATERSTOWN,

TYPE OF MONUMENT: 3/4" IRON ROD ELEVATION - M.S.L. DATUM _____

STATE PLANE COORDINATES: N _____

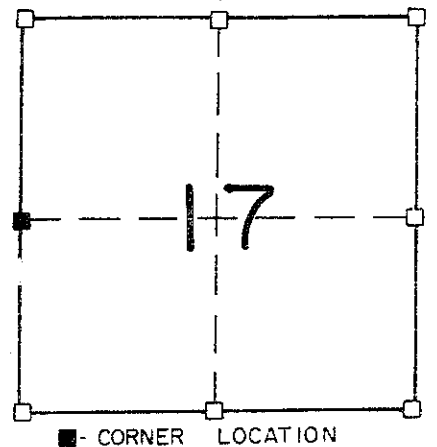
WISCONSIN SOUTH ZONE E _____

WITNESSES TO CORNER LOCATION

MATTHEW J. JANIAK

SEAN M. WALSH

SECTION 17, T 8 N, R 2 W,
TOWN OF WATERSTOWN



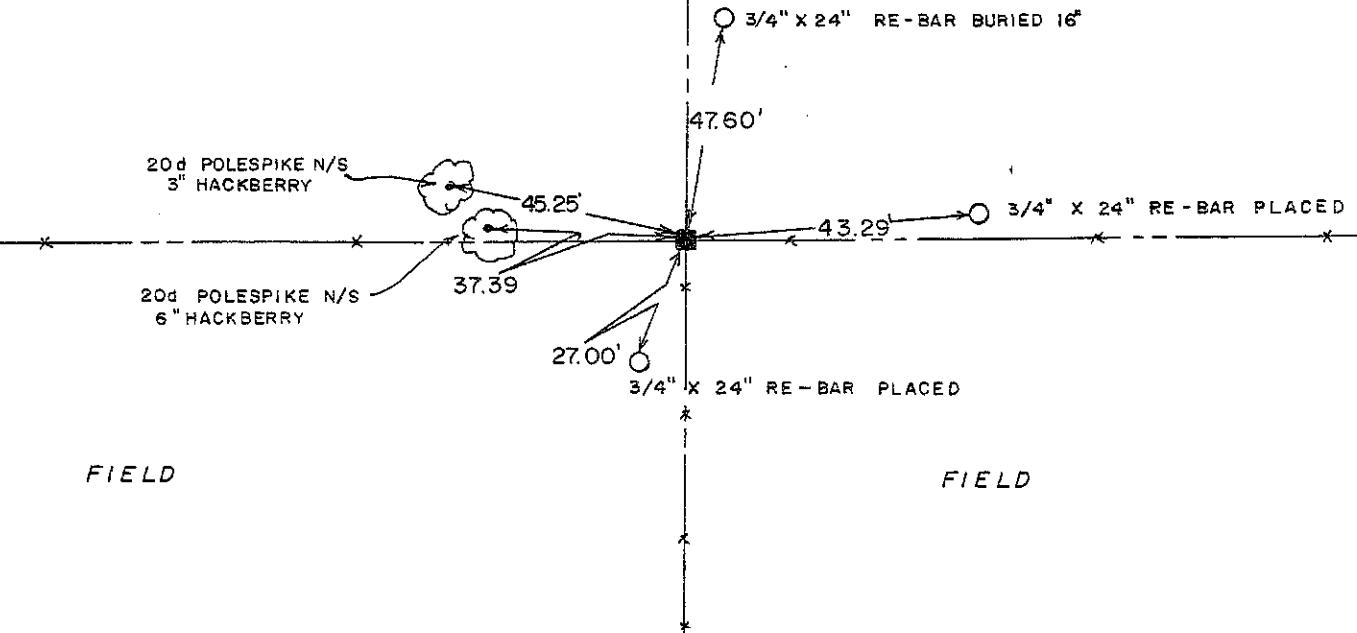
■ - CORNER LOCATION

NORTH

TIE SKETCH
(SHOW ALL HELPFUL FEATURES)

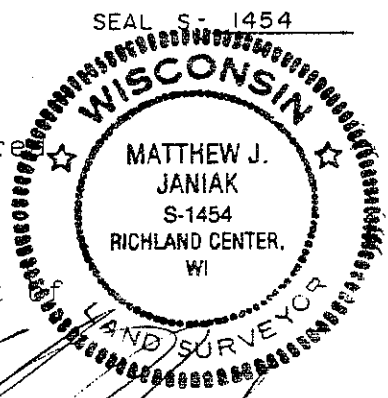
FIELD

FIELD



SURVEYOR'S CERTIFICATE
STATE OF WISCONSIN)
COUNTY) SS

I, Matthew J. Janiak, DO HEREBY CERTIFY THAT I have prepared
this document to perpetuate the above corner. That this
work was performed under my direction and that the
information contained hereon is correct to the best
of my knowledge, belief and information.



DATED THIS 26th DAY OF August, 19 87

REGISTERED LAND SURVEYOR

CORNER CODE

