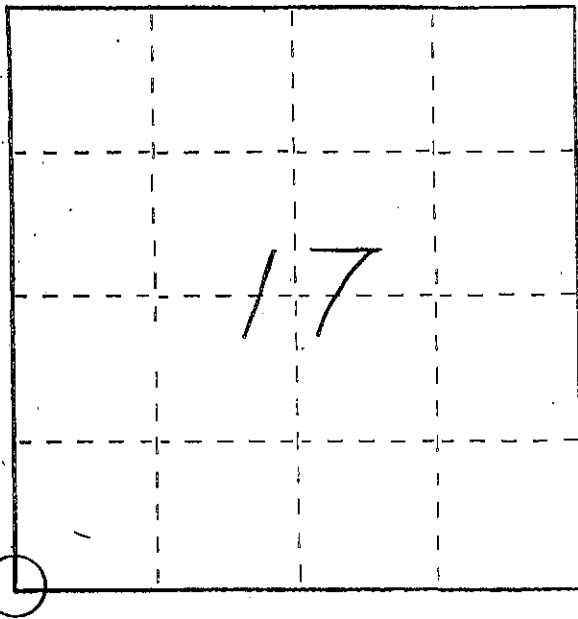
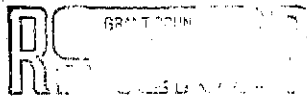


U. S. PUBLIC LAND SURVEY MONUMENT RECORD

INSTRUCTIONS: This record shall show the location of the corner and shall include all of the following nine elements (a through i).

- (a) Identify the corner by reference to the U.S. public land survey system.
- = Corner monument restored.

SOUTHWEST CORNER
SECTION 17
TOWN 8 NORTH
RANGE 2 WEST
WATERSTOWN TOWNSHIP
GRANT COUNTY, WI



MAY 6 1992

- (b) Describe any record evidence, monument evidence, occupational evidence, testimonial evidence or any other material evidence you considered, and whether the monument was found or placed.

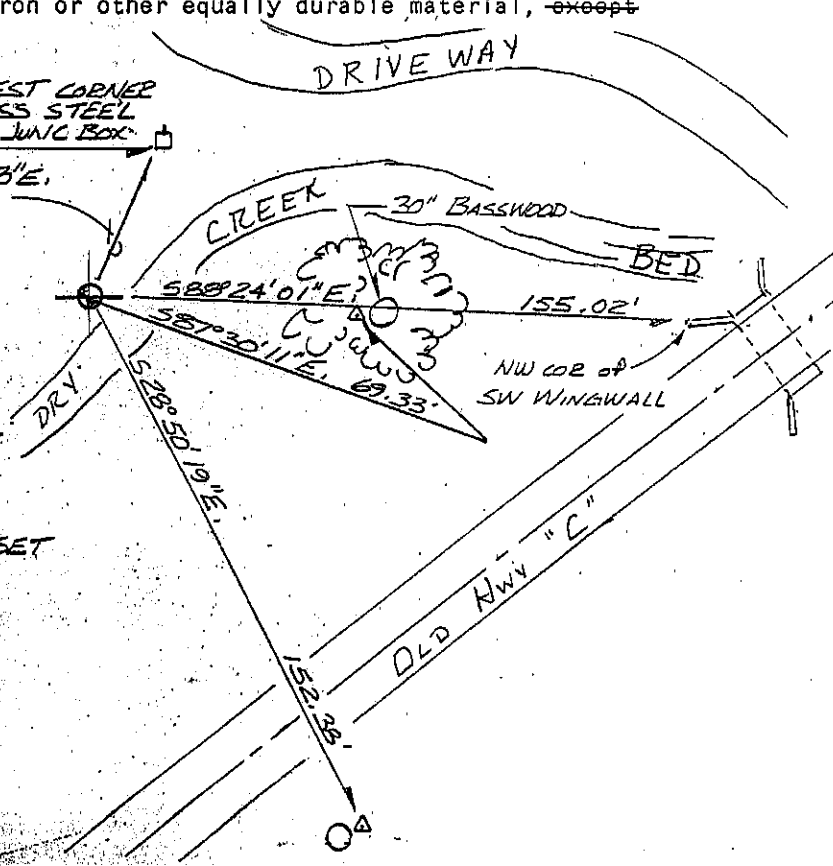
FOUND AND ACCEPTED 2" IRON PIPE RECORDED ON PREVIOUS SURVEYS

- (c) In the plan view drawing below, provide reference ties to at least 4 witness monuments, or, if the location is within a municipality, to at least 2 witness monuments. (Witness monuments shall be made of concrete, natural stone, iron or other equally durable material, ~~except wood.~~) Describe witness monuments.

- (d) Show a plan view drawing depicting the relevant monuments and reference ties which is sufficient in detail to enable accurate relocation of the corner monument if the corner monument is disturbed. Indicate north.

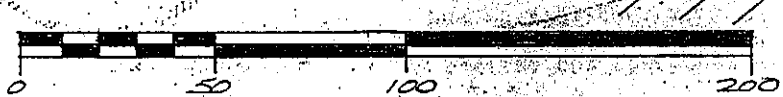
SOUTHWEST CORNER
STAINLESS STEEL
TELEPHONE JUNG BOX

N24°31'33"E
41.56'



LEGEND

- EXISTING 2" Ø IRON PIPE @ SW COR. SEC. 17-8-2W
- △ No. 4 x 1/8" REINFORCING BAR SET
- TELEPHONE PO...



SCALE: 1" = 50'

(e) Describe any material discrepancy between the location of the corner as restored or reestablished and the location of that corner as previously restored or reestablished by distance and direction. Show the discrepancy on the plan view drawing under (d), above. Show the distances between the corner as previously restored or reestablished and (1) the corner as restored or reestablished, and (2) to at least 2 of the witness monuments shown on the drawing in (d), above.

NONE

(f) Was the corner restored through acceptance of (1) an obliterated evidence location, or, (2) a found perpetuated location?

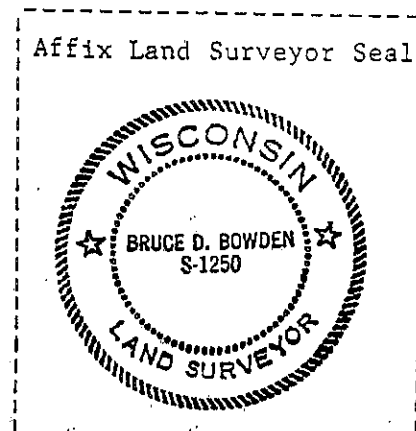
(2) A FOUND PERPETUATED LOCATION

(g&h) Was the corner reestablished through lost corner proportionate methods? If so, show the method, including the directions and distances to other public land survey corners used as evidence or used for proportioning in determining the corner location?

NO

(i) I, BRUCE D. BOWDEN
(type or print name) certify that the corner location shown on this record was determined by me or under my direction and control and that this U.S. Public Land Survey Monument Record is correct and complete to the best of my knowledge and belief.

Bruce D. Bowden May 4, 1992
Signature Date



Watters town

APR 27 1987

RECORD OF CORNER MONUMENTATION

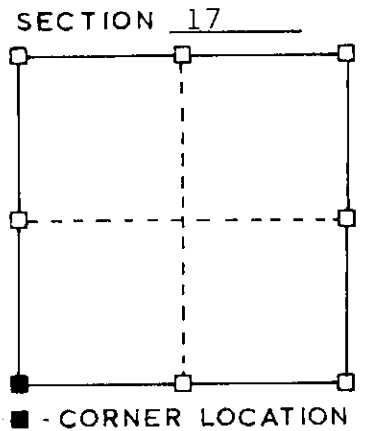
Southwest CORNER, SECTION 17 TOWNSHIP 8 N., RANGE 2 W.
 GRANT COUNTY, WISCONSIN.

STATE PLANE COORDINATES OF _____
 (Y) NORTH _____ ELEVATION _____
 (X) EAST _____

HORIZONTAL DATUM: WISCONSIN STATE PLANE COORDINATE SYSTEM, SOUTH ZONE

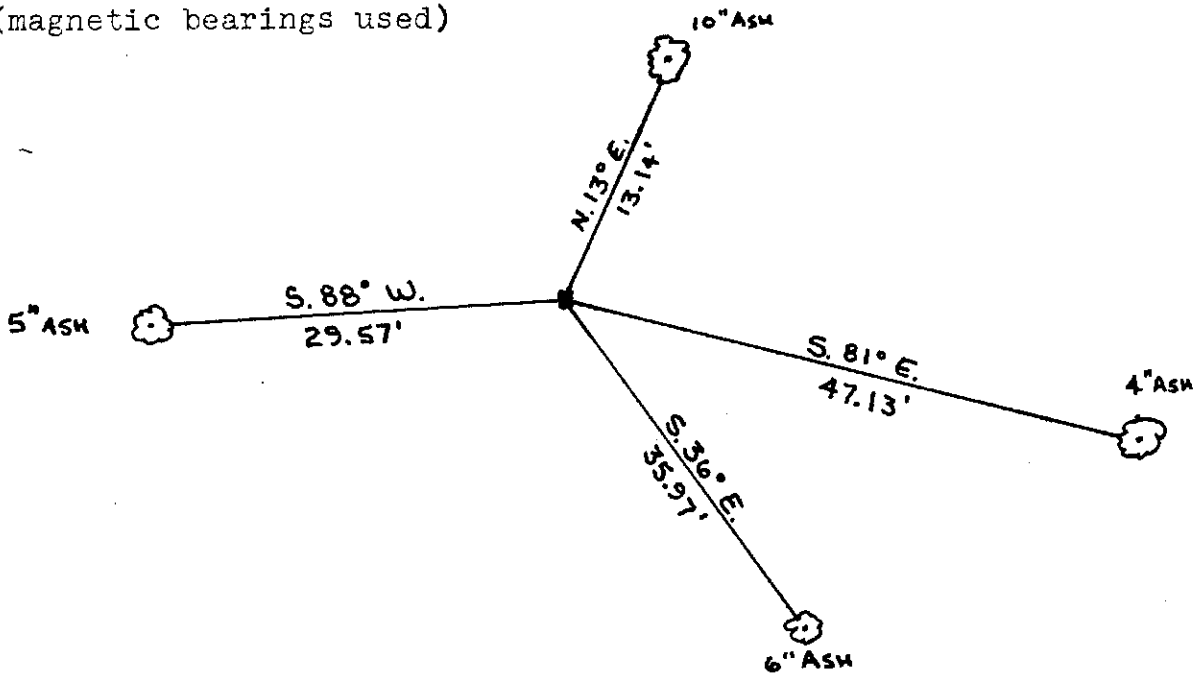


SKETCH OF CORNER
 REFERENCE TIES



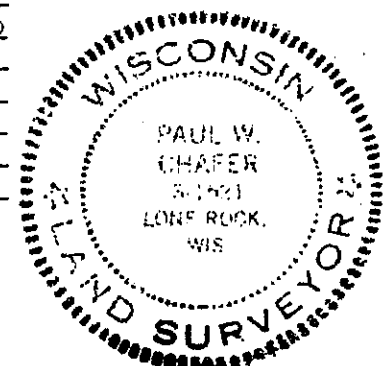
TYPE OF MONUMENT: 2" iron pipe found

(magnetic bearings used)



SURVEYOR'S CERTIFICATE
 STATE OF WISCONSIN)
 (GRANT COUNTY)

I HEREBY CERTIFY THAT a 2" iron pipe was located at
the section corner location. A previous survey tied to
this pipe. I made the required ties to this pipe as
described above.



DATED THIS 25 DAY OF
April 1987

Paul W. Chafer
 REGISTERED LAND SURVEYOR
 S- 1521

27