

GRANT COUNTY CERTIFIED LAND CORNER

CORNER NUMBER 55A

CERTIFICATE:

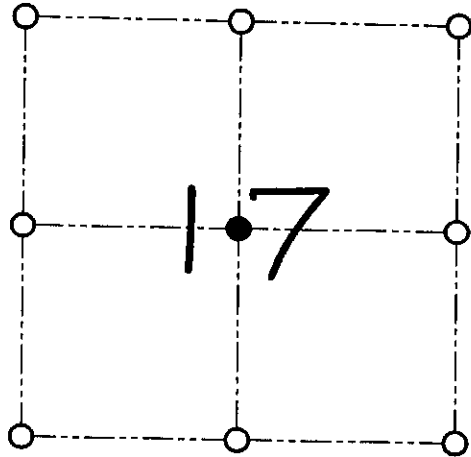
I, Larry L. Austin, do hereby certify that on the 22nd day of March, 2000, I found no evidence of the Center of Section 17, Town 8 North, Range 2 West, of the 4th Principal Meridian, and I re-established said corner according to the Wisconsin statutes as shown and described hereon.

Dated this 23rd day of June, 2000

Larry L. Austin
Larry L. Austin S-1903



SEAL



● = CORNER LOCATION

CENTER OF
SECTION 17, T 8 N R 2 W
TOWN OF WATTERSTOWN

HISTORY OF ORIGINAL CORNER ESTABLISHMENT:

No record of the corner ever being set.

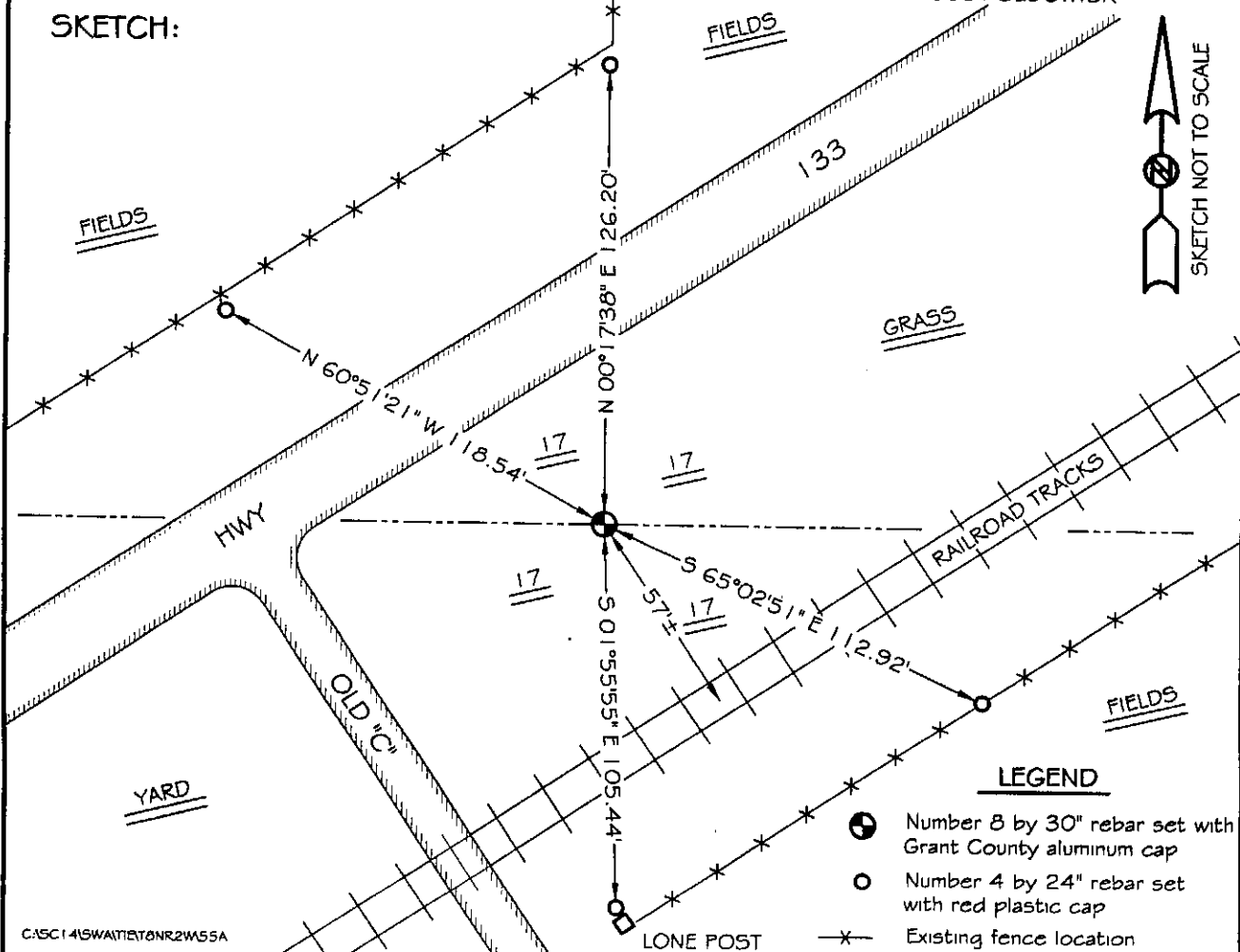
DESCRIPTION OF CORNER EVIDENCE FOUND:

I set the corner at the intersection of the quarter lines.
Verified this location using EDM & GPS methods.

DESCRIPTION OF CORNER AND WITNESS MONUMENTS, references and accessories used to perpetuate the original or re-established location of this corner

WITNESS TO THE CORNER LOCATION: SHANE AUSTIN & CODY AUSTIN & BOBBY SEDGWICK

SKETCH:



LEGEND

- Number 8 by 30" rebar set with Grant County aluminum cap
- Number 4 by 24" rebar set with red plastic cap
- Existing fence location