

### U.S. PUBLIC LAND SURVEY MONUMENT RECORD

(As Required By s. A-E 7.08, WI Adm. Code)

History of original corner establishment and subsequent restorations and description of any record, monument, occupational, testimonial or other evidence considered:

There are no recent records of this corner and no monuments were found. The easting of a N-S fence was accepted as it fit relationships noted by Herbert Gould in the 1800's. The corner was computed at 1/2 the distance between a pipe at the NE corner and the NE corner of LOT 35 of CSM 177 based on ties to the

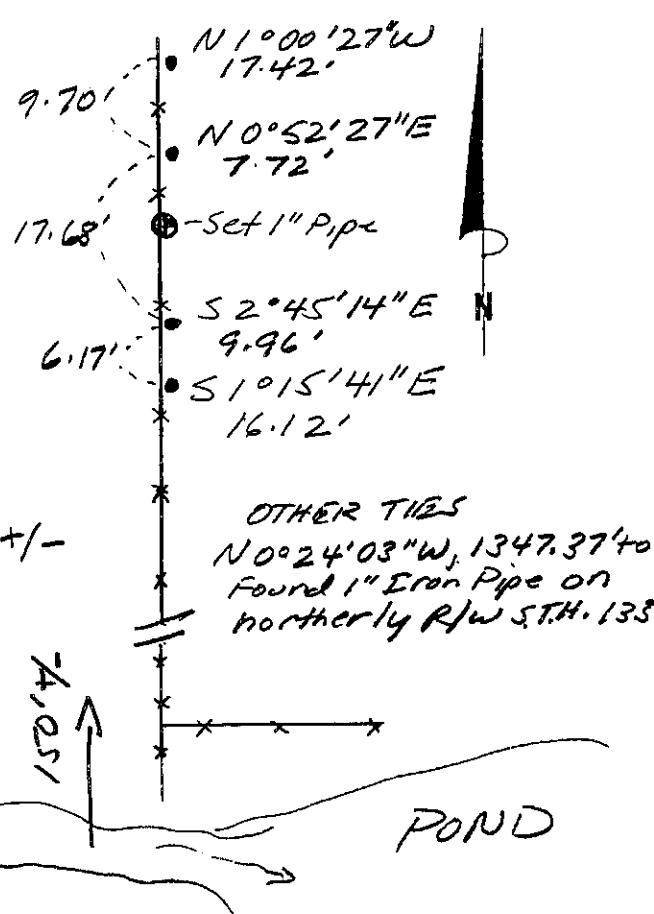
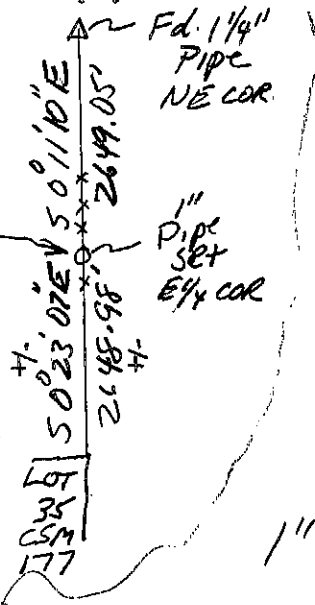
Corner was: (Check All That Apply)

- Restored through acceptance of an obliterated evidence location
- Restored through acceptance of a found perpetuated location
- Considered a lost corner and reestablished through lost corner proportionate methods (include a plan view drawing showing distances and directions to other Public Land Survey Corners used for proportioning and determining the corner location)
- Restored or reestablished in a location that differs from a previous restoration or reestablishment (include a plan view drawing and indicate what was set and /or found)

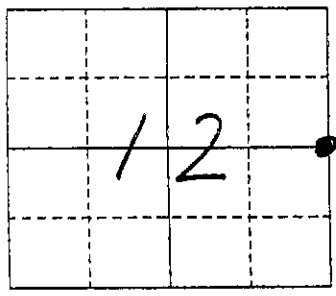
Describe the monument and accessories used to perpetuate the location of this corner. (Include a plan view drawing and indicate what was set and/or found)

Bearings referenced to the Grant County Coordinate System  
 GRANT CO. COORDS.  
 (N) 646126.41  
 (E) 862421.69

The E 1/4  
 corner of Section 12  
 T. 8 N., R. 2 W  
GRANT County, Wisconsin  
 Job ID: 995-9  
 Book # 99-2



Legend  
 • 5/8" Rebar Set  
 x x Fence



● = Location of Corner



I, Michael R. LaRosa  
 (Type or print name) certify that the corner location shown on this record was determined by me or under my direction and control and that this U.S. Public Land Survey Monument Record is correct and complete to the best of my knowledge and belief.  
Michael R. LaRosa 4/20/1999  
 Signature Date

Index No. 40