

GRANT COUNTY CERTIFIED LAND CORNER

CORNER NUMBER 45

CERTIFICATE:

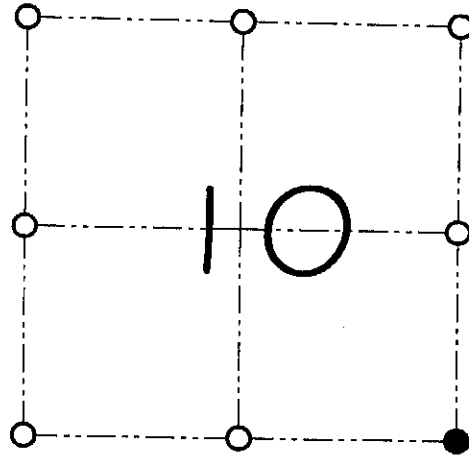
I, Larry L. Austin, do hereby certify that on the 22nd day of March, 2000, I found evidence of the Southeast corner of Section 10, Town 8 North, Range 2 West, of the 4th Principal Meridian, and I re-established said corner according to the Wisconsin statutes as shown and described hereon.

Dated this 23rd day of June, 2000

Larry L. Austin
Larry L. Austin S-1903



SEAL



● = CORNER LOCATION

SOUTHEAST CORNER OF SECTION 10, T 8 N R 2 W TOWN OF WATTESTOWN

HISTORY OF ORIGINAL CORNER ESTABLISHMENT:

Corner was originally set in 1833 by Harvey Parke. In 1888 Gould tied to the corner and established new bearing trees. In 1995 Terry Cornell set a 1" iron pipe.

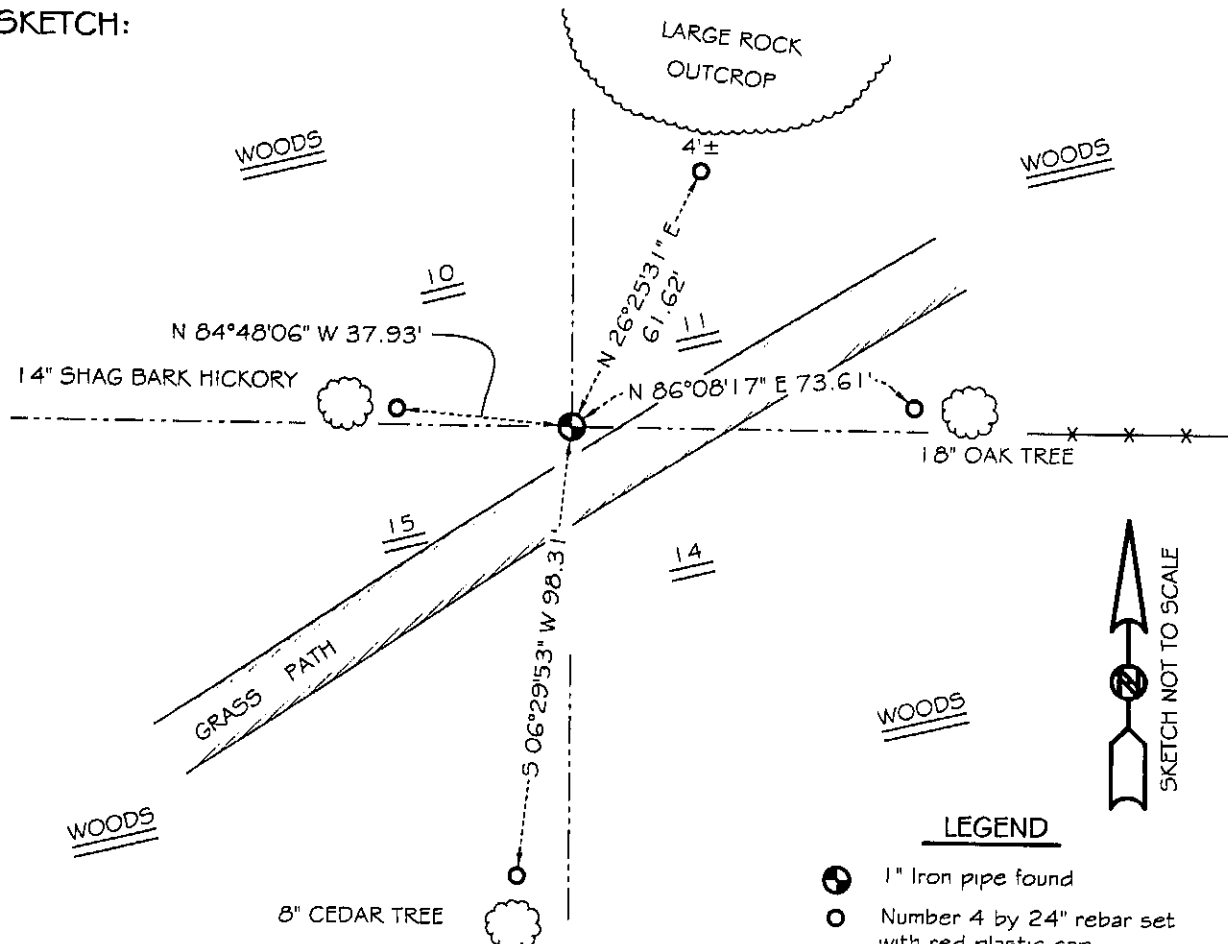
DESCRIPTION OF CORNER EVIDENCE FOUND:

I found the 1" iron pipe and accepted it's location after an EDM & GPS traverse of the area.

DESCRIPTION OF CORNER AND WITNESS MONUMENTS, references and accessories used to perpetuate the original or re-established location of this corner

WITNESS TO THE CORNER LOCATION: SHANE AUSTIN & CODY AUSTIN & BOBBY SEDGWICK

SKETCH:



LEGEND

- 1" Iron pipe found
- Number 4 by 24" rebar set with red plastic cap
- x- Existing fence location