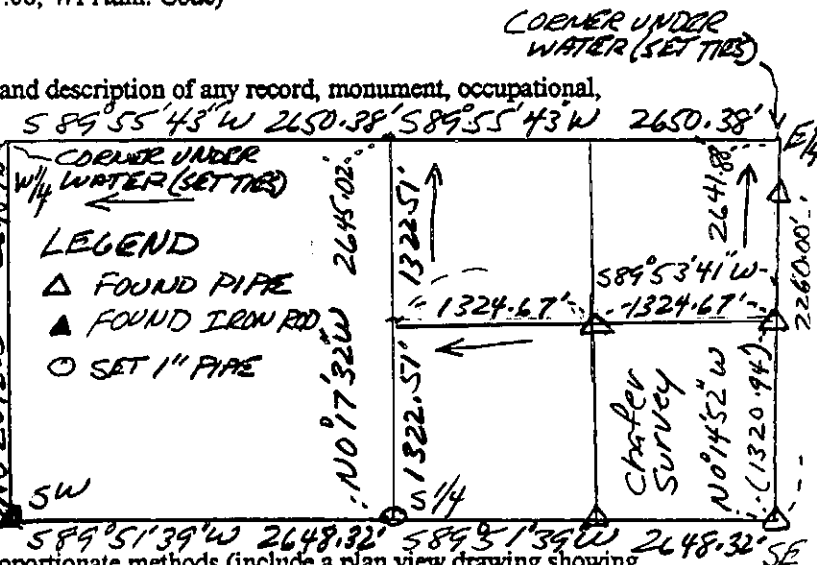


# U.S. PUBLIC LAND SURVEY MONUMENT RECORD

(As Required By s. A-E 7.08, WI Adm. Code)

History of original corner establishment and subsequent restorations and description of any record, monument, occupational, testimonial or other evidence considered:

*There are no recent survey records of this corner. The corner was re-established by extrapolation of a survey by Paul Chater S-1521 dated 4/29/1986 using relationships noted in a 1851 survey by John Everett. See diagram at right for details.*



Corner was: (Check All That Apply)

- Restored through acceptance of an obliterated evidence location
- Restored through acceptance of a found perpetuated location
- Considered a lost corner and reestablished through lost corner proportionate methods (include a plan view drawing showing distances and directions to other Public Land Survey Corners used for proportioning and determining the corner location)
- Restored or reestablished in a location that differs from a previous restoration or reestablishment (include a plan view drawing and indicate what was set and/or found)

Describe the monument and accessories used to perpetuate the location of this corner. (Include a plan view drawing and indicate what was set and/or found)

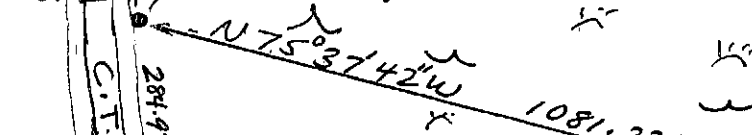
GRANT CO. COORDS.  
(N) 651410.70  
(E) 857100.91

1" = 300' +/-

Legend

• 5/8" Rebar set

Bridge → 11' south of guardrail end



The W 1/4

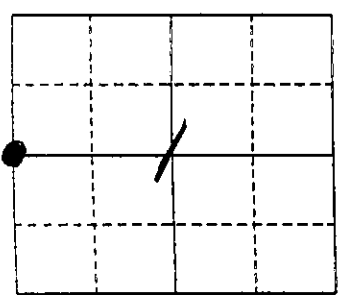
corner of Section 1

T. 8 N., R. 2 W

GRANT County, Wisconsin

Job ID: 995-9

Book # 99-2



● = Location of Corner

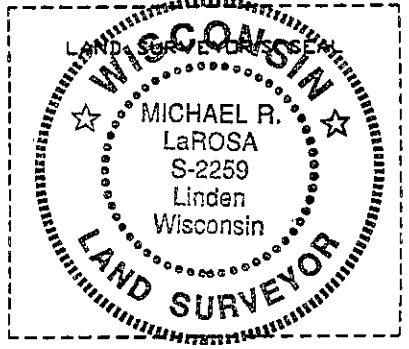
Michael R. LaRosa

Type or print name) certify that the corner location shown on this record was determined by me or under my direction and control and that this U.S. Public Land Survey Monument Record is correct and complete to the best of my knowledge and belief.

Michael R. LaRosa 4/20/1999

Signature

Date



Index No. 19