

U.S. PUBLIC LAND SURVEY MONUMENT RECORD - GRANT COUNTY, WI

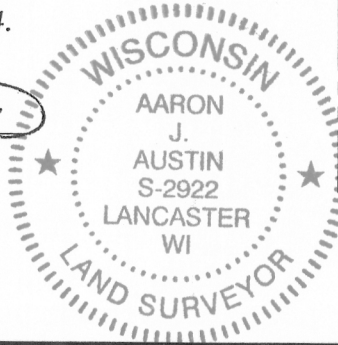
Section 35, Town 8 North Range 1 West, Town of Muscoda

CERTIFICATE:

I, Aaron J. Austin, do hereby certify that the corner location on this record was determined by me and/or under my direct supervision and that this U.S. Public Land Survey Monument Record is correct and complete to the best of my knowledge and belief.

Dated this 19th day of March, 2014.

Aaron J. Austin
 Aaron J. Austin, S-2922



● = CORNER LOCATION

HISTORY OF CORNER ESTABLISHMENT:

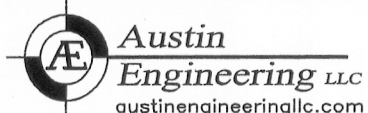
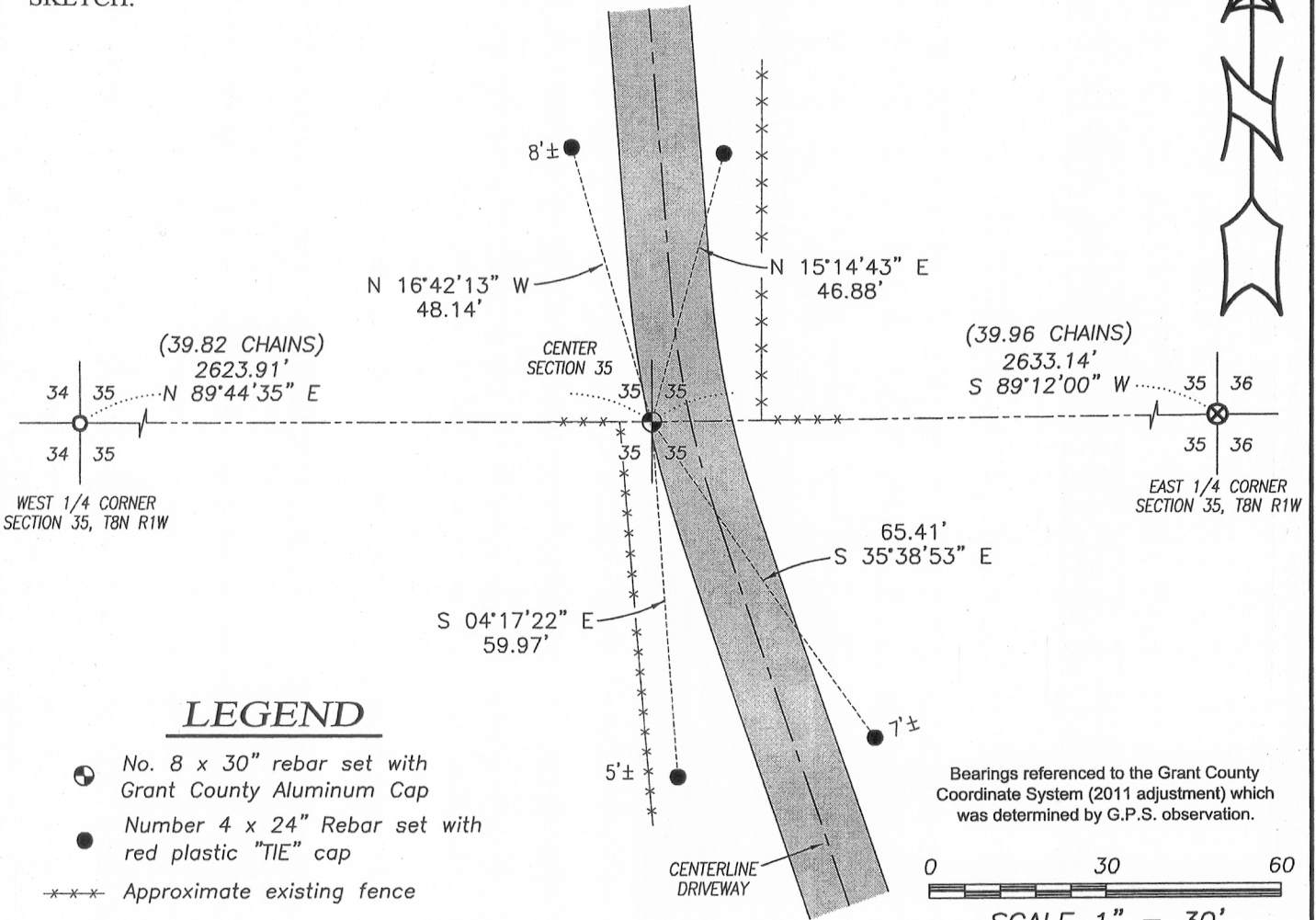
Corner was not set with original survey.
 1883 J.C. Scott made reference to a Stone on a Survey filed in Book D, Page 130.

DESCRIPTION OF CORNER EVIDENCE FOUND:

I reset the corner at the prorated distances along the East-West 1/4 line of Section 35 using an ancient fence corner for the Northing location. The Northing location fits measurements taken to an existing fence along the South line of the North 1/2 of the SW 1/4. I verified this location by G.P.S. methods.

DESCRIPTION OF CORNER AND WITNESS MONUMENTS, references and accessories used to perpetuate the original or re-established location of this corner. Witnesses to corner location Shane Austin.

SKETCH:



4211 HWY 81 E, LANCASTER, WI 53813
 PHONE: 608-723-6363 FAX: 608-723-6702

JOB NO: 13s212
 G:\13s212
 H:\TIE\T8NR1W\118.5

FIELDBOOK: TDSR
 DRAWN BY: AJ AUSTIN
 CREW: SA-BA

118.5

MAR 21 2014