

U.S. PUBLIC LAND SURVEY MONUMENT RECORD – GRANT COUNTY, WI

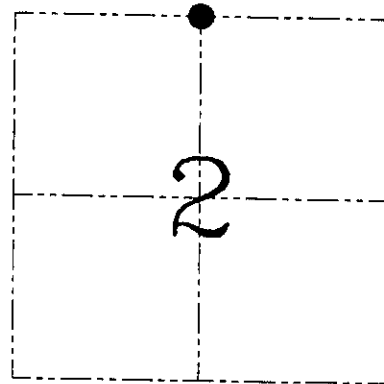
Section 2, Town 7 North, Range 1 West, Town of Castle Rock

CERTIFICATE

I, Larry L. Austin, do hereby certify that the corner location on this record was determined by me and/or under my direct supervision and that this U.S. public land survey monument record is correct and complete to the best of my knowledge and belief.

Dated this 5th day of May, 2002

Larry L. Austin
Larry L. Austin S-1903



● = CORNER LOCATION

HISTORY OF CORNER ESTABLISHMENT

Corner was originally set in 1832 by Sibley.
No other recent surveys of the corner were found.

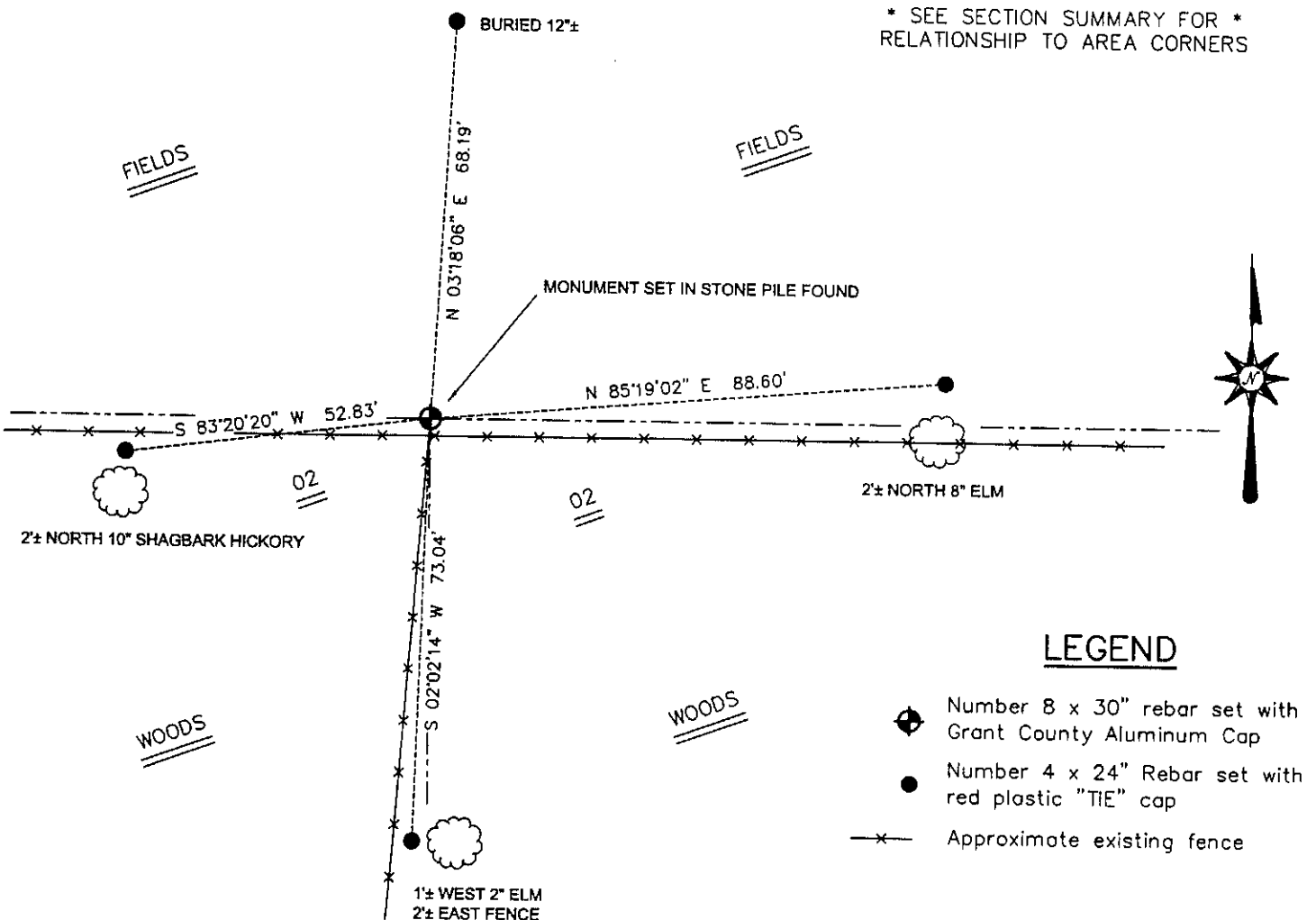
DESCRIPTION OF CORNER EVIDENCE FOUND

I found an existing fence corner and accepted it's location after an EDM & GPS traverse of the area.

DESCRIPTION OF CORNER AND WITNESS MONUMENTS

, references and accessories used to perpetuate the original or re-established location of this corner. Witnesses to the corner location B. Sedgwick & S. Austin & B. Digman

SKETCH:



* SEE SECTION SUMMARY FOR *
RELATIONSHIP TO AREA CORNERS

LEGEND

- Number 8 x 30" rebar set with Grant County Aluminum Cap
- Number 4 x 24" Rebar set with red plastic "TIE" cap
- x- Approximate existing fence

SKETCH NOT TO SCALE

AUSTIN ENGINEERING, LLC

4211 HWY 81 EAST, LANCASTER, WI 53813
PHONE 608-723-6363 FAX 608-723-6702

FIELDBOOK: SDR33, 9917

G: \T7NR1W\03
C: \SWA\TIE\T7NR1W\04
CREW: BS-SB-SA-BD

DRAWN BY: SW AUSTIN
APPROVED: LL AUSTIN

CORNER NUMBER 04