

GRANT COUNTY CERTIFIED LAND CORNER

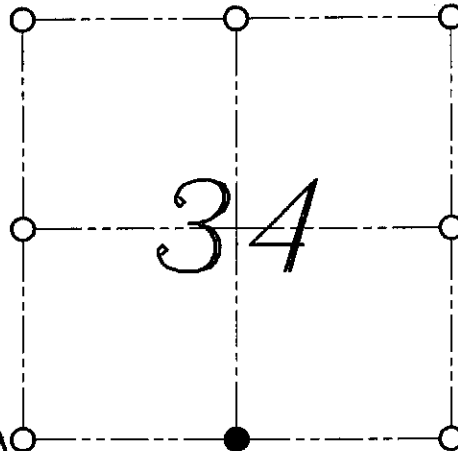
CORNER NUMBER 126

CERTIFICATE:

I, LARRY L. AUSTIN, DO HEREBY CERTIFY THAT ON 26th DAY OF OCTOBER, 1999, I FOUND EVIDENCE OF THE SOUTH 1/4 CORNER OF SECTION 34, TOWN 8 NORTH, RANGE 1 WEST, OF THE FOURTH PRINCIPAL MERIDIAN, AND I RE-ESTABLISHED SAID CORNER ACCORDING TO THE WISCONSIN STATUTES AS SHOWN AND DESCRIBED HEREON.

DATED THIS 2nd DAY OF NOVEMBER, 1999

Larry L. Austin
LARRY L. AUSTIN S-1903



● = CORNER LOCATION
SOUTH 1/4 CORNER OF
SECTION 34, T 8 N R 1 W
TOWN OF MUSCODA



HISTORY OF ORIGINAL CORNER ESTABLISHMENT:

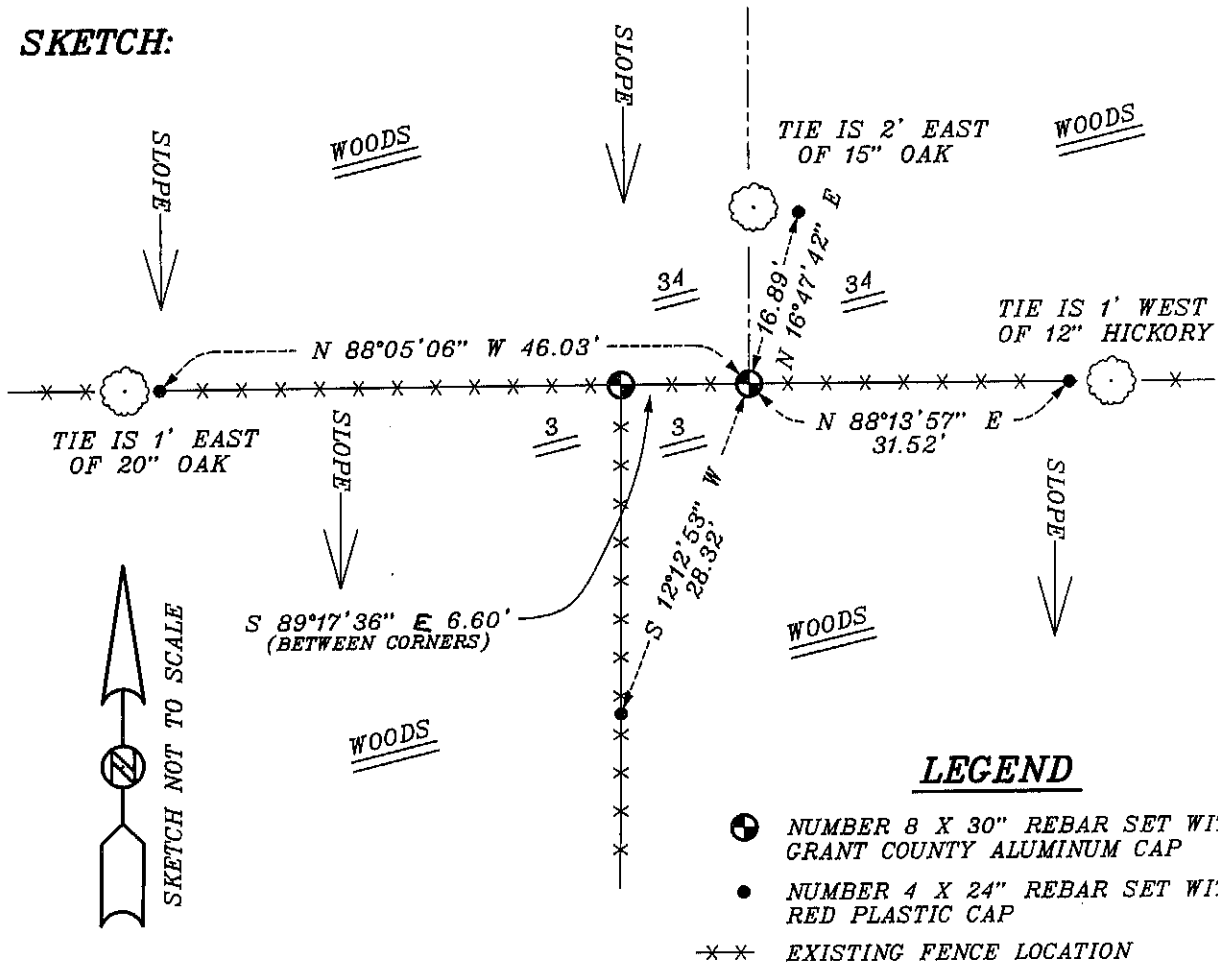
CORNER WAS ORIGINALLY SET IN 1833 BY SIBLEY.
NO OTHER RECORD OF THE CORNER WAS FOUND.

DESCRIPTION OF CORNER EVIDENCE FOUND:

I FOUND AN OCCUPIED LOCATION FOR THE NORTH 1/4 OF SECTION 3. I RESET THE SOUTH 1/4 OF SECTION 34 BASED ON THE PROPORTIONED OFFSET. VERIFIED THIS LOCATION USING E.D.M. AND G.P.S. METHODS.

DESCRIPTION OF CORNER AND WITNESS MONUMENTS, REFERENCES AND ACCESSORIES USED TO PERPETUATE THE ORIGINAL OR RE-ESTABLISHED LOCATION OF THIS CORNER:
WITNESS TO THE CORNER LOCATION: BOBBY SEDGWICK ; SHELBY BLINDERT

SKETCH:



LEGEND

- NUMBER 8 X 30" REBAR SET WITH GRANT COUNTY ALUMINUM CAP
- NUMBER 4 X 24" REBAR SET WITH RED PLASTIC CAP
- ×× EXISTING FENCE LOCATION

GRANT COUNTY CERTIFIED LAND CORNER

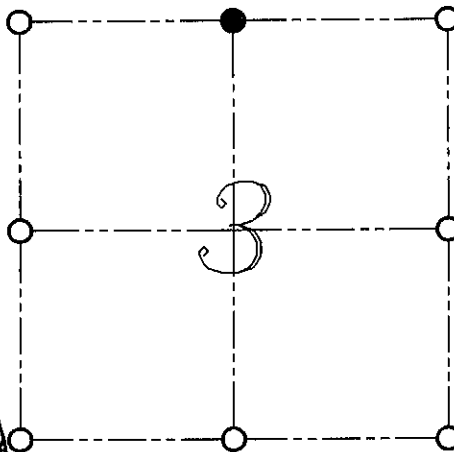
CORNER NUMBER 06

CERTIFICATE:

I, LARRY L. AUSTIN, DO HEREBY CERTIFY THAT ON 26th DAY OF OCTOBER, 1999, I FOUND EVIDENCE OF THE NORTH 1/4 CORNER OF SECTION 3, TOWN 7 NORTH, RANGE 1 WEST, OF THE FOURTH PRINCIPAL MERIDIAN, AND I RE-ESTABLISHED SAID CORNER ACCORDING TO THE WISCONSIN STATUTES AS SHOWN AND DESCRIBED HEREON.

DATED THIS 2nd DAY OF NOVEMBER, 1999

Larry L. Austin
LARRY L. AUSTIN S-1903



● = CORNER LOCATION

NORTH 1/4 CORNER OF SECTION 3, T 7 N R 1 W TOWN OF CASTLE ROCK



HISTORY OF ORIGINAL CORNER ESTABLISHMENT:

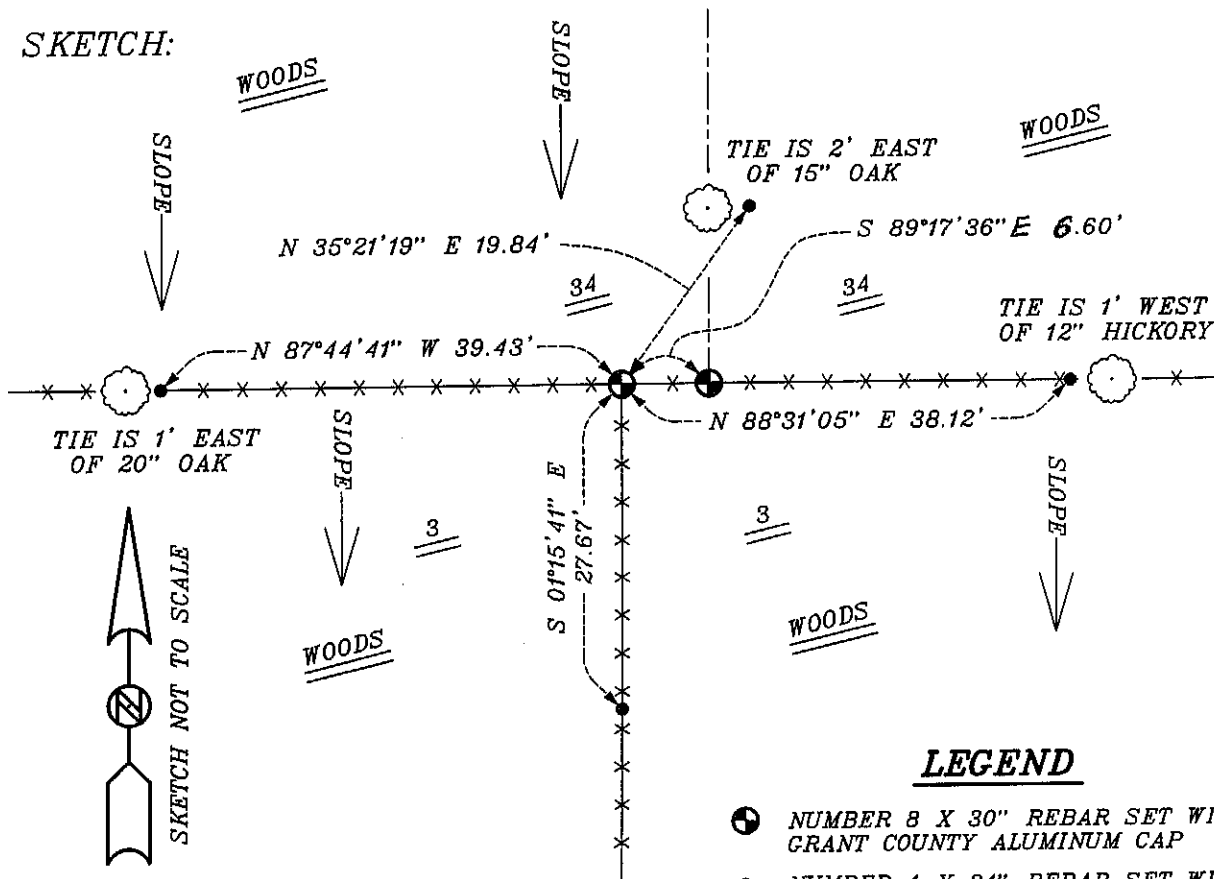
CORNER WAS NOT ORIGINALLY SET.
IN 1880 JOEL BARBER FOUND A STONE HEAP SET BY REED.

DESCRIPTION OF CORNER EVIDENCE FOUND:

I FOUND AN OCCUPIED FENCE CORNER AND ACCEPTED IT'S LOCATION AFTER AN E.D.M. AND G.P.S. TRAVERSE OF THE AREA.

DESCRIPTION OF CORNER AND WITNESS MONUMENTS, REFERENCES AND ACCESSORIES USED TO PERPETUATE THE ORIGINAL OR RE-ESTABLISHED LOCATION OF THIS CORNER:
WITNESS TO THE CORNER LOCATION: BOBBY SEDGWICK ; SHELBY BLINDERT

SKETCH:



LEGEND

- NUMBER 8 X 30" REBAR SET WITH GRANT COUNTY ALUMINUM CAP
- NUMBER 4 X 24" REBAR SET WITH RED PLASTIC CAP
- *-* EXISTING FENCE LOCATION