

# GRANT COUNTY CERTIFIED LAND CORNER

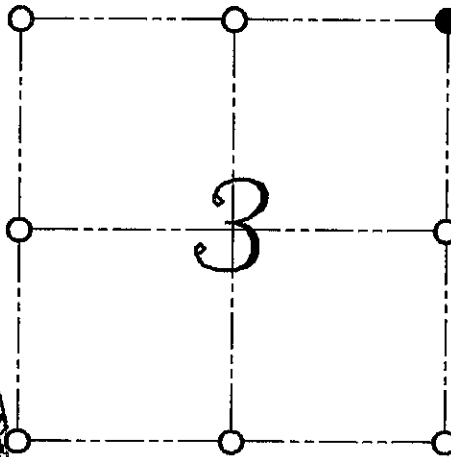
**CERTIFICATE:**

I, LARRY L. AUSTIN, DO HEREBY CERTIFY THAT ON 26th DAY OF OCTOBER, 1999, I FOUND EVIDENCE OF THE NORTHEAST CORNER OF SECTION 03, TOWN 7 NORTH, RANGE 1 WEST, OF THE FOURTH PRINCIPAL MERIDIAN, AND I RE-ESTABLISHED SAID CORNER ACCORDING TO THE WISCONSIN STATUTES AS SHOWN AND DESCRIBED HEREON.

DATED THIS 2nd DAY OF NOVEMBER, 1999

*Larry L. Austin*  
LARRY L. AUSTIN S-1903

CORNER NUMBER 05



SEAL

● = CORNER LOCATION  
NORTHEAST CORNER OF  
SECTION 03, T 7 N R 1 W  
TOWN OF CASTLE ROCK

**HISTORY OF ORIGINAL CORNER ESTABLISHMENT:**

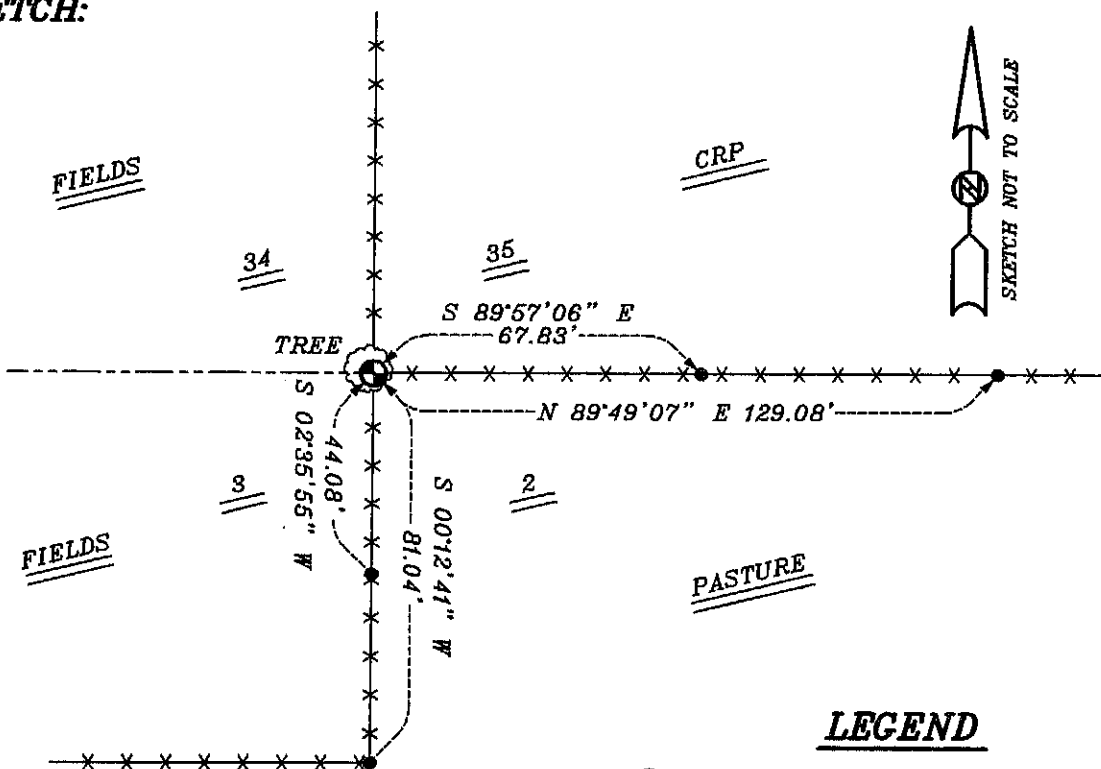
CORNER WAS SET IN 1833 BY SIBLEY.  
NO OTHER RECORD OF THE CORNER WAS FOUND.

**DESCRIPTION OF CORNER EVIDENCE FOUND:**

I FOUND AN EXISTING 1" IRON PIPE EMBEDDED IN THE BASE OF THE TREE.  
I ACCEPTED THIS LOCATION AFTER AN E.D.M. AND G.P.S. TRAVERSE OF THE AREA.

DESCRIPTION OF CORNER AND WITNESS MONUMENTS, REFERENCES AND ACCESSORIES  
USED TO PERPETUATE THE ORIGINAL OR RE-ESTABLISHED LOCATION OF THIS CORNER:  
WITNESS TO THE CORNER LOCATION: BOBBY SEDGWICK ; SHELBY BLINDERT

**SKETCH:**



**LEGEND**

- 1" IRON PIPE FOUND EMBEDDED IN BASE OF TREE
- NUMBER 4 X 24" REBAR SET WITH RED PLASTIC CAP
- \*\*\* EXISTING FENCE LOCATION