

U.S. PUBLIC LAND SURVEY MONUMENT RECORD

(As Required By s. A-E 7.08, WI Adm. Code)

History of original corner establishment and subsequent restorations and description of any record, monument, occupational, testimonial or other evidence considered: *Ownership records indicate continuous occupation at the S 1/4 of 32 T8N R1W since the original conveyance. I accepted an existing 3 way fence intersection as this location. I computed the N 1/4 corner of 5 T7N, R1W at 1/2 the distance between a found monument at the NW corner and the computed easting of the NE corner using relationships shown in a plat of survey by Terry Cornell dated 12/6/1993 and filed in Book W on Page 311. I located*

Corner was: (Check All That Apply) *the S 1/4 of 33, T8N, R1W. See the accompanying Section Summary for these relationships.*

- Restored through acceptance of an obliterated evidence location
- Restored through acceptance of a found perpetuated location
- Considered a lost corner and reestablished through lost corner proportionate methods (include a plan view drawing showing distances and directions to other Public Land Survey Corners used for proportioning and determining the corner location)
- Restored or reestablished in a location that differs from a previous restoration or reestablishment (include a plan view drawing and indicate what was set and/or found)

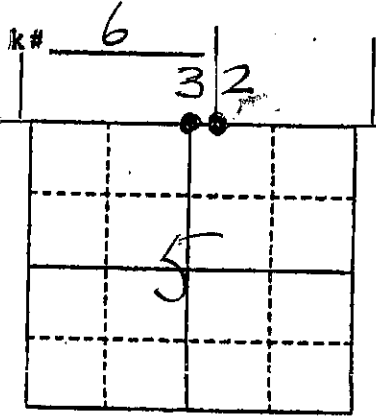
Describe the monument and accessories used to perpetuate the location of this corner. (Include a plan view drawing and indicate what was set and/or found)

Legend: (O) Ring Shank Nail Set in Tree as noted
 • 1/2" Iron Rod Set
 ** Fence

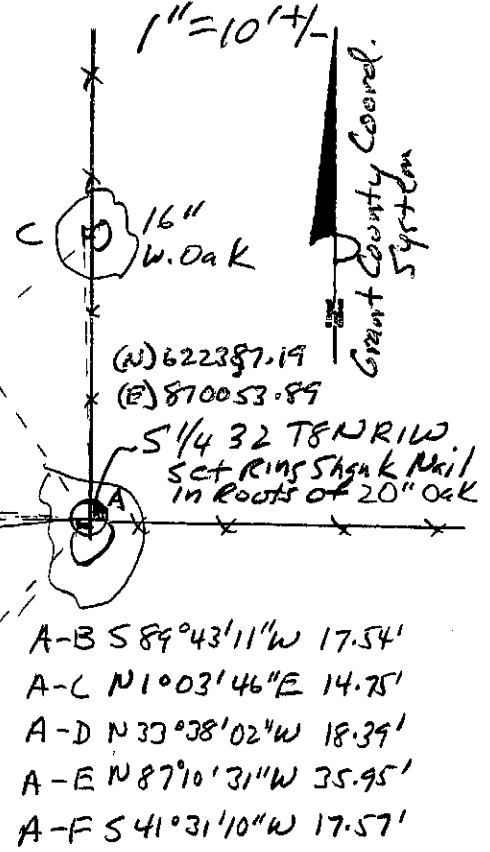
S 1/4 of 32 T8N R1W
 The *N 1/4 of 5 T7N R1W*

Corner of Section _____
 _____ N., R. _____ E.
 Grant County, Wisconsin

ID: 2003-10



N 1/4 5 T7N R1W
 Set 1" x 30" Iron Rod w/ Alum. Cap
 (N) 622387.11
 (E) 870036.35
 B-C N 50° 12' 41" E 23.19'
 B-D N 25° 32' 33" E 17.07'
 B-E N 84° 13' 25" W 18.45'
 B-F S 24° 17' 54" E 14.34'



⊙ = Location of Corner

Michael R. LaRosa
 Type or print name) certify that the corner location shown on this record was determined by me or under my direction and control and that this U.S. Public Land Survey Monument Record is correct and complete to the best of my knowledge and belief.
Michael R. LaRosa 5/28/2003
 Signature Date



Index No. _____