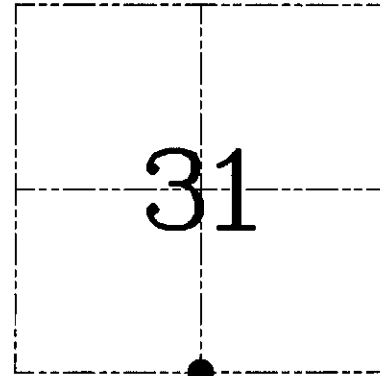
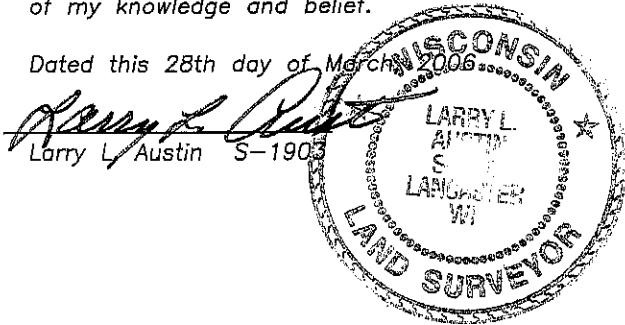


U.S. PUBLIC LAND SURVEY MONUMENT RECORD – GRANT COUNTY, WI
Section 31, Town 8 North Range 1 West, Town of Muscodia

CERTIFICATE

I, Larry L. Austin, do hereby certify that the corner location on this record was determined by me and/or under my direct supervision and that this U.S. public land survey monument record is correct and complete to the best of my knowledge and belief.

Dated this 28th day of March, 2006



● = CORNER LOCATION

HISTORY OF CORNER ESTABLISHMENT

Corner was originally set by Lyon.
 No other record of the corner was found.

DESCRIPTION OF CORNER EVIDENCE FOUND

I reset the corner at the offset from the North 1/4 corner of Section 6, T7N R1W. Verified this location using EDM & GPS methods.

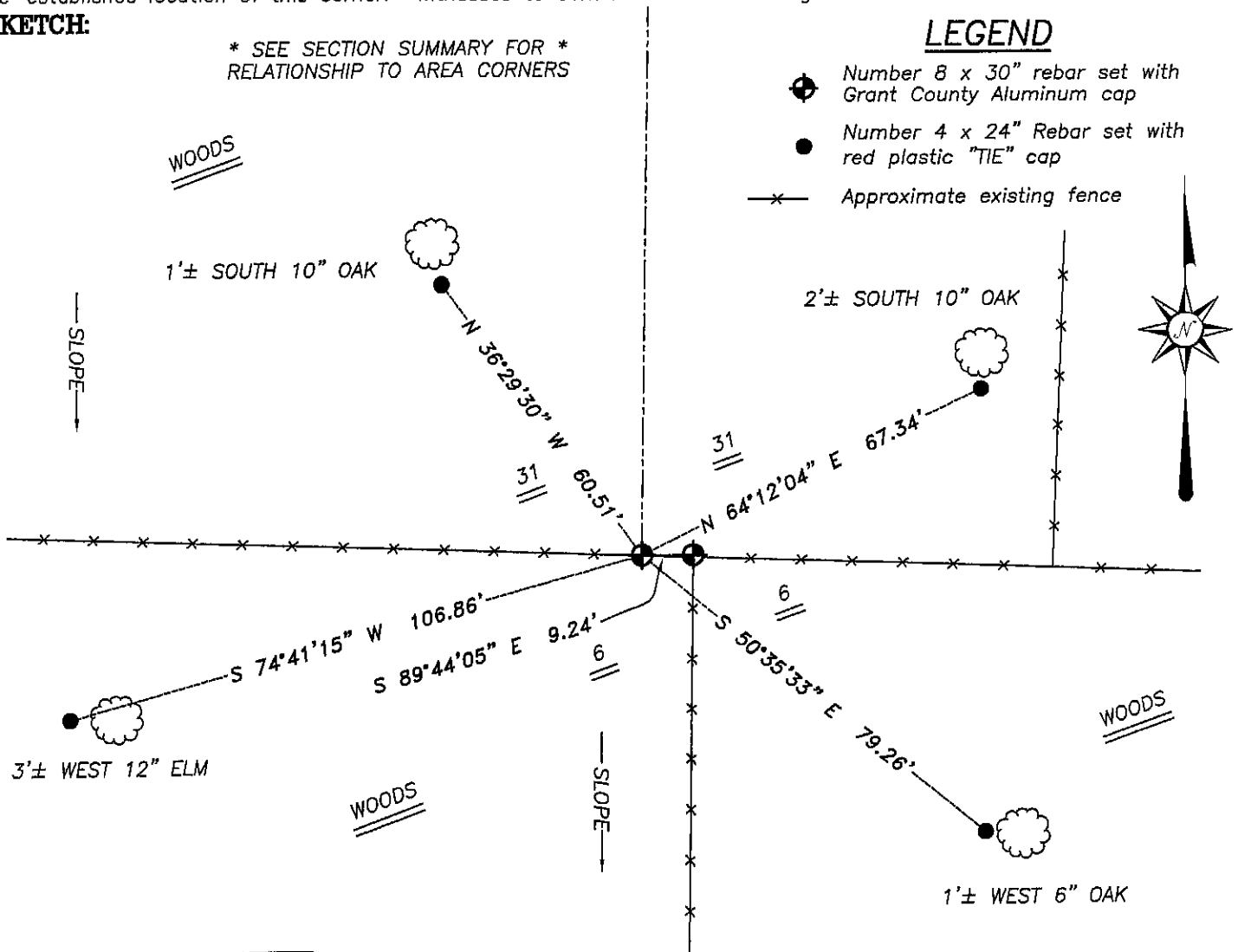
DESCRIPTION OF CORNER AND WITNESS MONUMENTS, references and accessories used to perpetuate the original or re-established location of this corner. Witnesses to corner location Brad Digman & Shane Austin

SKETCH:

* SEE SECTION SUMMARY FOR *
 RELATIONSHIP TO AREA CORNERS

LEGEND

- Number 8 x 30" rebar set with Grant County Aluminum cap
- Number 4 x 24" Rebar set with red plastic "TIE" cap
- x— Approximate existing fence



SKETCH NOT TO SCALE



Austin Engineering LLC

4211 HWY 81 E, LANCASTER, WI 53813
 PHONE 608-723-6363 FAX 608-723-6702

JOB NUMBER 06S067
 FIELDBOOK: TDSR, 2515
 G:\T7NR1W\06
 H:\TIE\T8NR1W\132

DRAWN BY: SW AUSTIN
 APPROVED: LL AUSTIN

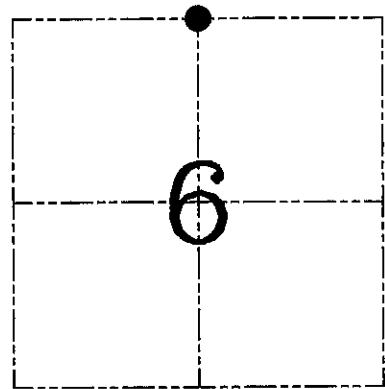
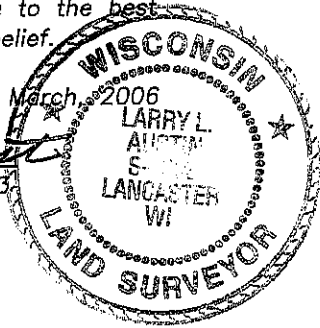
U.S. PUBLIC LAND SURVEY MONUMENT RECORD – GRANT COUNTY, WI
Section 6, Town 7 North Range 1 West, Town of Castle Rock

CERTIFICATE

I, Larry L. Austin, do hereby certify that the corner location on this record was determined by me and/or under my direct supervision and that this U.S. public land survey monument record is correct and complete to the best of my knowledge and belief.

Dated this 28th day of March, 2006

Larry L. Austin
 Larry L. Austin S-1903



● = CORNER LOCATION

HISTORY OF CORNER ESTABLISHMENT

Corner was never originally set.

DESCRIPTION OF CORNER EVIDENCE FOUND

I found and accepted an occupied fence corner at this location after an EDM & GPS traverse of the area.

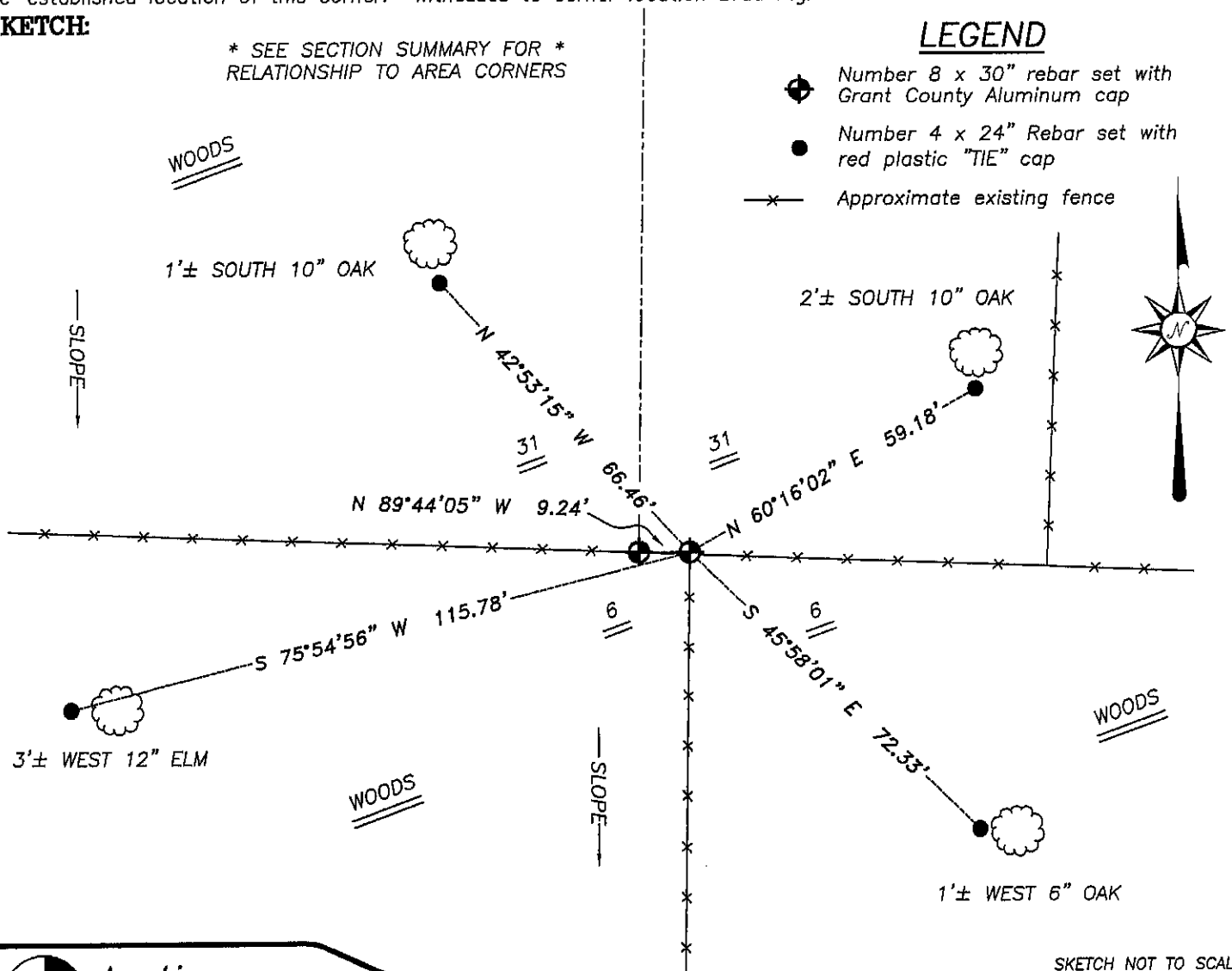
DESCRIPTION OF CORNER AND WITNESS MONUMENTS, references and accessories used to perpetuate the original or re-established location of this corner. Witnesses to corner location Brad Digman & Shane Austin

SKETCH:

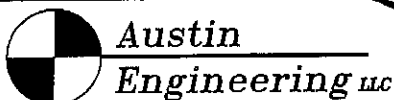
* SEE SECTION SUMMARY FOR *
 RELATIONSHIP TO AREA CORNERS

LEGEND

- Number 8 x 30" rebar set with Grant County Aluminum cap
- Number 4 x 24" Rebar set with red plastic "TIE" cap
- x— Approximate existing fence



SKETCH NOT TO SCALE



4211 HWY 81 E, LANCASTER, WI 53813
 PHONE 608-723-6363 FAX 608-723-6702

JOB NUMBER 06S067
 FIELDBOOK: TDSR, 2515
 G:\T7NR1W\06
 H:\TIE\T7NR1W\12

DRAWN BY: SW AUSTIN
 APPROVED: LL AUSTIN