

U.S. PUBLIC LAND SURVEY MONUMENT RECORD – GRANT COUNTY, WI

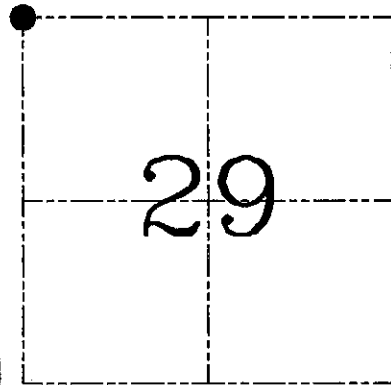
Section 29, Town 8 North Range 1 West, Town of Muscoda

CERTIFICATE

I, Larry L. Austin, do hereby certify that the corner location on this record was determined by me and/or under my direct supervision and that this U.S. public land survey monument record is correct and complete to the best of my knowledge and belief.

Dated this 18th day of August, 2009

Larry L. Austin
Larry L. Austin S-1903



● = CORNER LOCATION

HISTORY OF CORNER ESTABLISHMENT

Corner was originally set in 1833 by Sibley.
Many surveys in the area tied to a 1" iron pipe at this location.

DESCRIPTION OF CORNER EVIDENCE FOUND

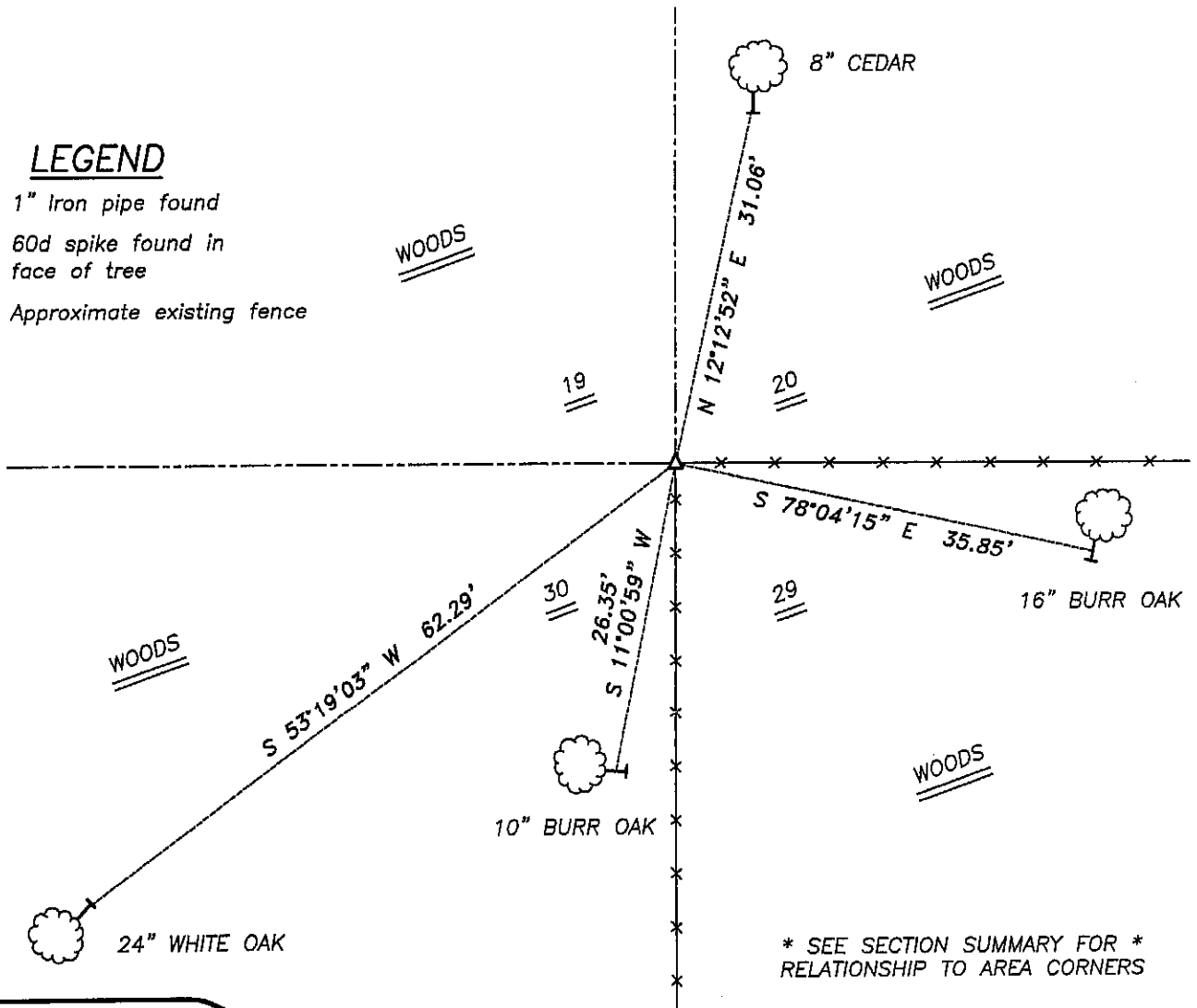
I found and accepted the 1" iron pipe and ties set by a previous survey.
I accepted their locations after an EDM & GPS traverse of the area.

DESCRIPTION OF CORNER AND WITNESS MONUMENTS, references and accessories used to perpetuate the original or re-established location of this corner. Witnesses to corner location Bobby Sedgwick & Shane Austin & Brad Hazen

SKETCH:

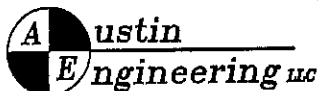
LEGEND

- △ 1" Iron pipe found
- ⊥ 60d spike found in face of tree
- x— Approximate existing fence



* SEE SECTION SUMMARY FOR *
RELATIONSHIP TO AREA CORNERS

SKETCH NOT TO SCALE



4211 HWY 81 E, LANCASTER, WI 53813
PHONE 608-723-6363 FAX 608-723-6702

JOB NUMBER 04S024
FIELDBOOK: TSDR, 2332
G:\T8NR1W\29
H:\TIE\T8NR1W\91

DRAWN BY: SW AUSTIN
APPROVED: LL AUSTIN