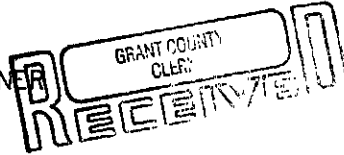


CERTIFIED LAND CORNER



JUL 26 1989

STATE OF WISCONSIN ) S.S.  
COUNTY OF GRANT )

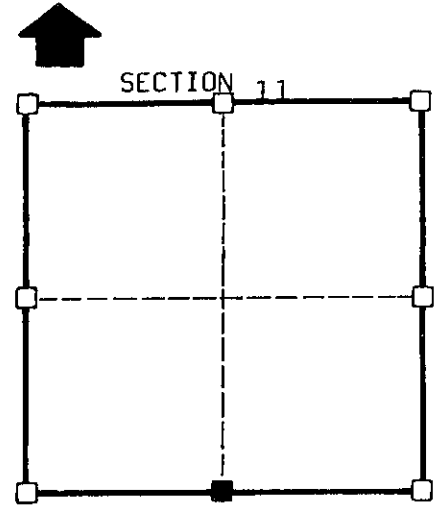
JUL 26 1989

CERTIFICATE

I, Robert M. Lampman, do hereby certify that on the 23rd day of March 1989, I found (evidence) ~~(XXXXXX)~~ of the S 1/4 corner of Section 11, T 8 N, R 1 W, Fourth Principal Meridian, and I re-established said corner according to the Wisconsin Statutes as shown and described hereon.

Dated this 28th day of March 19 89

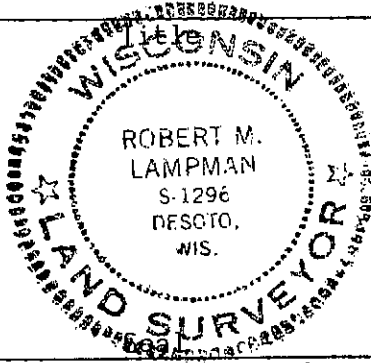
Robert M. Lampman S-1296



■ = corner location

T 8 N R 1 W

Town of: Muscoda



History of original corner establishment:  
Original survey by Sibley in 1833.

Description of corner evidence found:  
Found existing stone used on former surveys.

Description of corner and witness monuments, references and accessories used to perpetuate the original or re-established location of this corner:

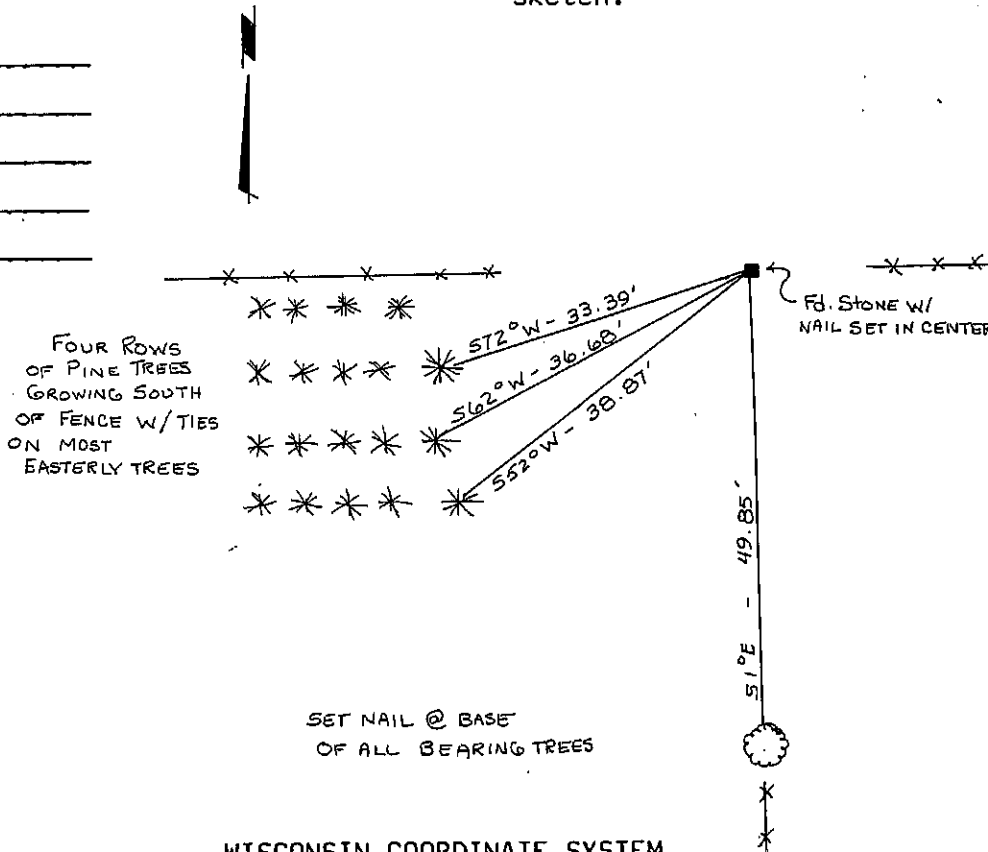
Witnesses to corner location:

Robert M. Lampman

Jerry L. Torgerson

Jessica A. Zamor

Sketch:



SURVEY CONTROL ORDER

Horizontal

Vertical

Corner	East(X)	North(Y)	Elevation(Z)	Zone
Control Sta. Name				

WISCONSIN COORDINATE SYSTEM