

# GRANT COUNTY CERTIFIED LAND CORNER

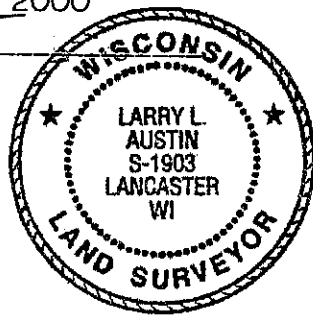
CORNER NUMBER 51

**CERTIFICATE:**

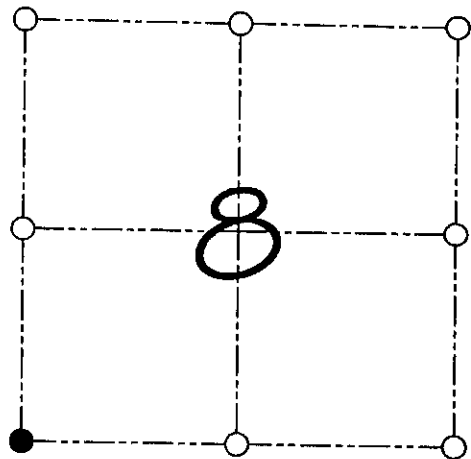
I, Larry L. Austin, do hereby certify that on the 2nd day of December, 1999, I found no evidence of the Southwest corner of Section 8, Town 8 North, Range 1 West, of the 4th Principal Meridian, and I re-established said corner according to the Wisconsin statutes as shown and described hereon.

Dated this 23rd day of June, 2000

*Larry L. Austin*  
Larry L. Austin S-1903



SEAL



● = CORNER LOCATION

SOUTHWEST CORNER OF  
SECTION 8, T 8 N R 1 W  
TOWN OF MUSCODA

**HISTORY OF ORIGINAL CORNER ESTABLISHMENT:**

Corner was originally set in 1833 by Harvey Parke.  
No other record of the corner was found.

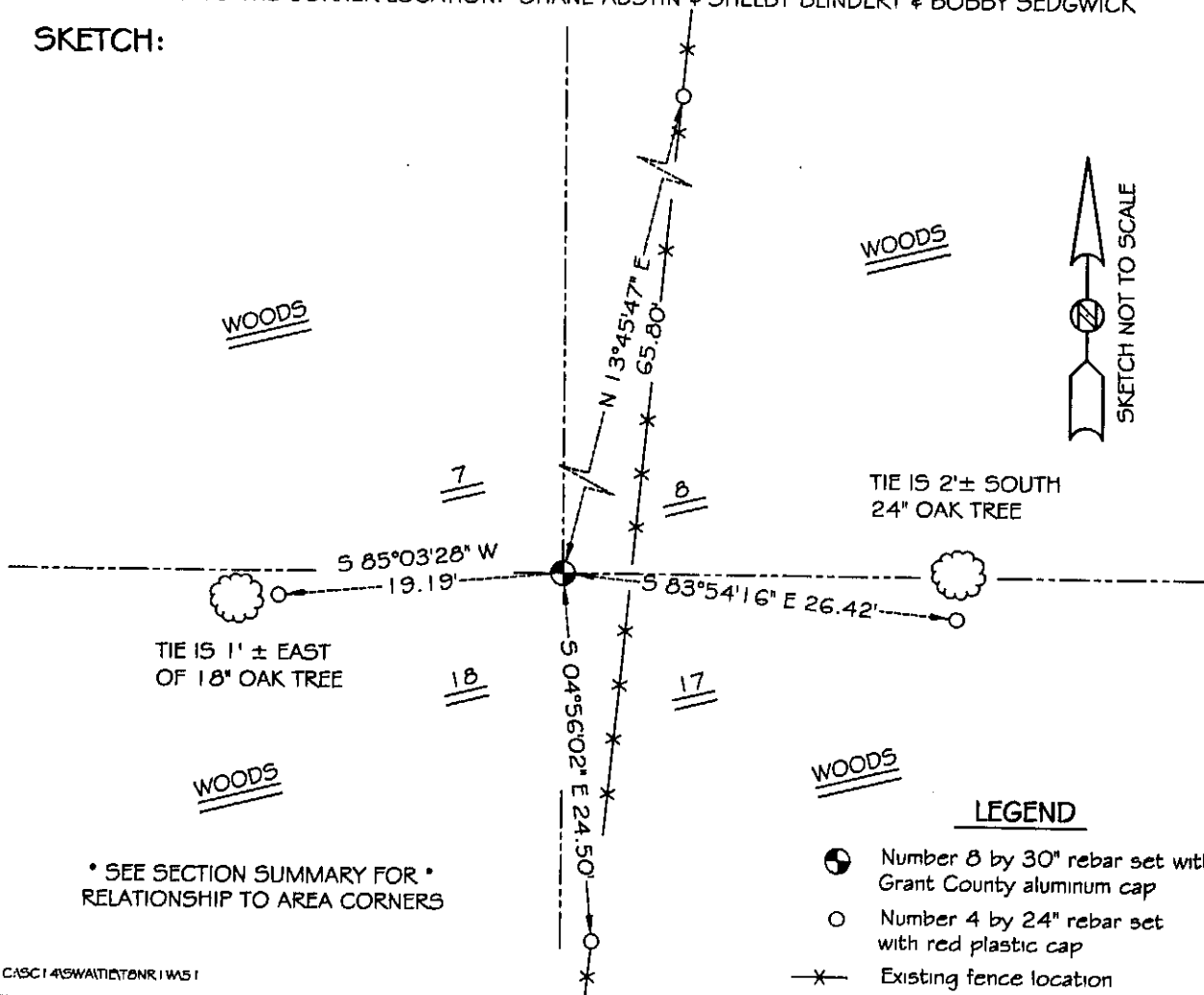
**DESCRIPTION OF CORNER EVIDENCE FOUND:**

I found an existing fence which appeared to go tree to tree and did not accept it. I reset the corner based on proportioning methods along the West line of the Northwest 1/4 of Section 17. Verified this location using E.D.M. & G.P.S. methods.

**DESCRIPTION OF CORNER AND WITNESS MONUMENTS, references and accessories used to perpetuate the original or re-established location of this corner**

WITNESS TO THE CORNER LOCATION: SHANE AUSTIN & SHELBY BLINDERT & BOBBY SEDGWICK

**SKETCH:**



\* SEE SECTION SUMMARY FOR \*  
RELATIONSHIP TO AREA CORNERS

**LEGEND**

- Number 8 by 30" rebar set with Grant County aluminum cap
- Number 4 by 24" rebar set with red plastic cap
- x— Existing fence location