

CERTIFIED LAND CORNER

GRANT COUNTY
RECEIVED
JUL 26 1989

STATE OF WISCONSIN)
COUNTY OF GRANT) S.S.

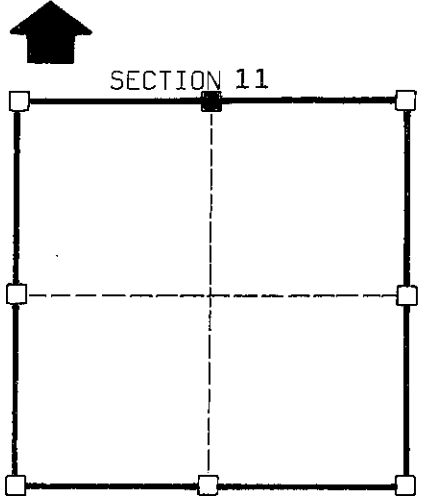
JUL 26 1989

CERTIFICATE

I, Robert M. Lampman, do hereby certify that on the 23rd day of March 1989, I found (evidence)(no evidence) of the N 1/4 corner of Section 11, T8 N, R1 W, Fourth Principal Meridian, and I re-established said corner according to the Wisconsin Statutes as shown and described hereon.

Dated this 28th day of March 1989

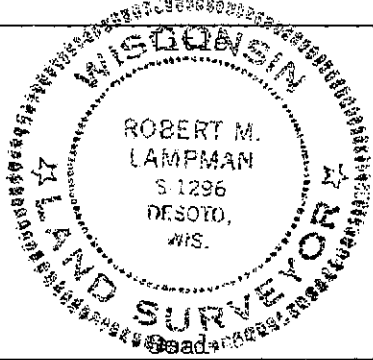
Robert M. Lampman S-1296



■ = corner location

T 8 N R 1 W

Town of: Muscoda



Muscoda Sup

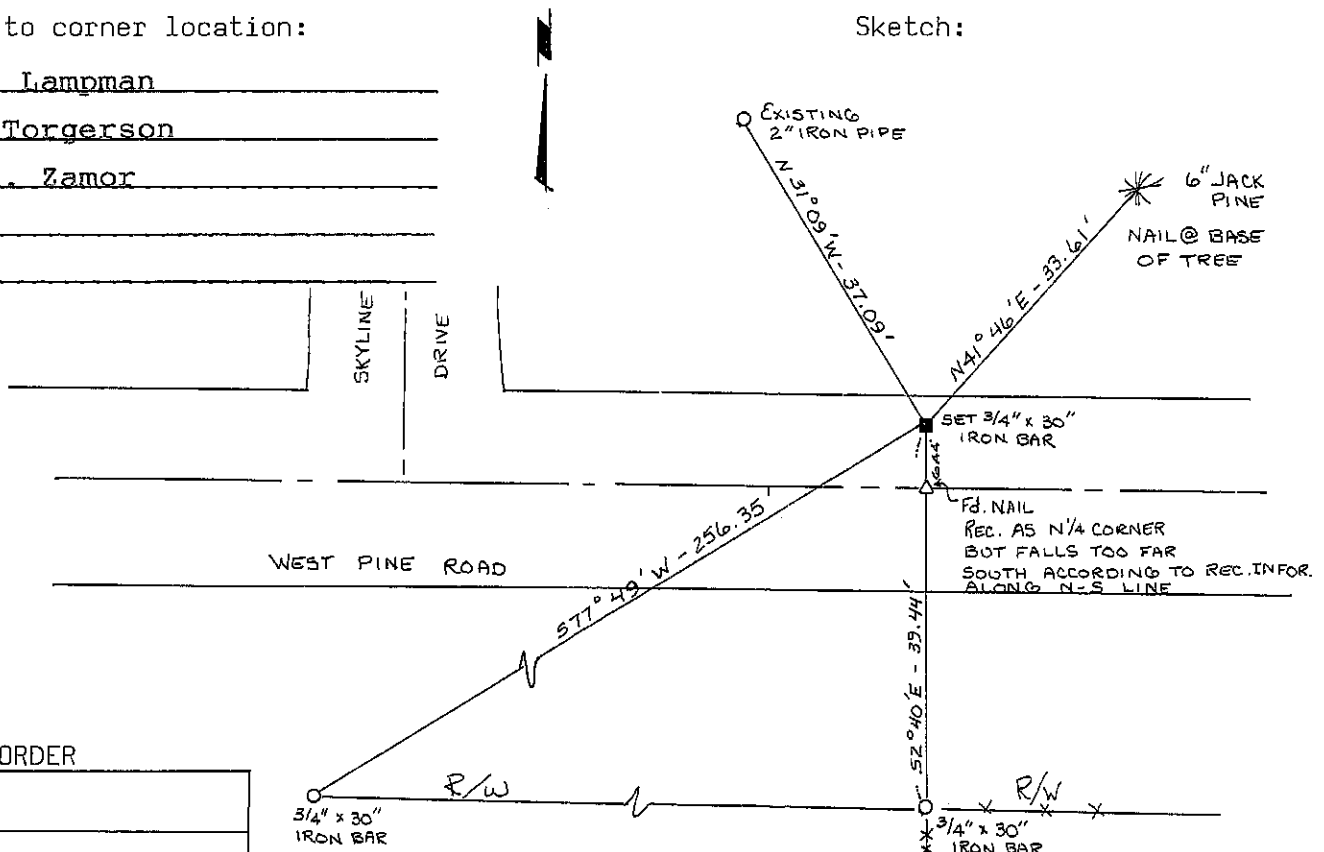
History of original corner establishment:
Original survey by Sibley in 1833.

Description of corner evidence found:
Used existing monumentation along N-S 1/4 line together with recorded deeds to set North one-quarter corner.

Description of corner and witness monuments, references and accessories used to perpetuate the original or re-established location of this corner:

Witnesses to corner location:
Robert M. Lampman
Jerry L. Torgerson
Jessica A. Zamor

Sketch:



SURVEY CONTROL ORDER

Horizontal
Vertical

WISCONSIN COORDINATE SYSTEM

Corner	East(X)	North(Y)	Elevation(Z)	Zone
Control Sta. Name				