

GRANT COUNTY CERTIFIED LAND CORNER

CORNER NUMBER 21

CERTIFICATE:

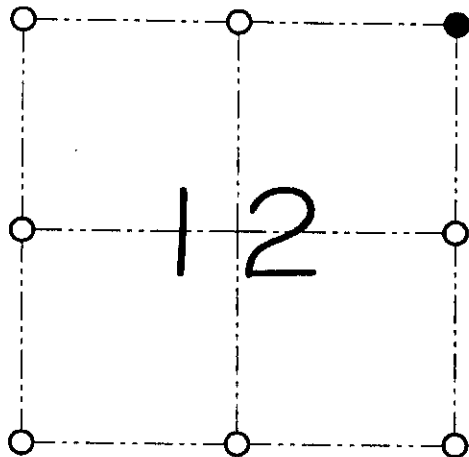
I, Larry L. Austin, do hereby certify that on the 2nd day of December, 1999, I found evidence of the Northeast corner of Section 12, Town 8 North, Range 1 West, of the 4th Principal Meridian, and I re-established said corner according to the Wisconsin statutes as shown and described hereon.

Dated this 23rd day of June, 2000

Larry L. Austin
Larry L. Austin S-1903



SEAL



● = CORNER LOCATION
NORTHEAST CORNER OF SECTION 12, T 8 N R 1 W TOWN OF MUSCODA

HISTORY OF ORIGINAL CORNER ESTABLISHMENT:

Corner was set in 1833 by Harvey Parke.
A 1" iron pipe with brass cap was used on many local surveys.

DESCRIPTION OF CORNER EVIDENCE FOUND:

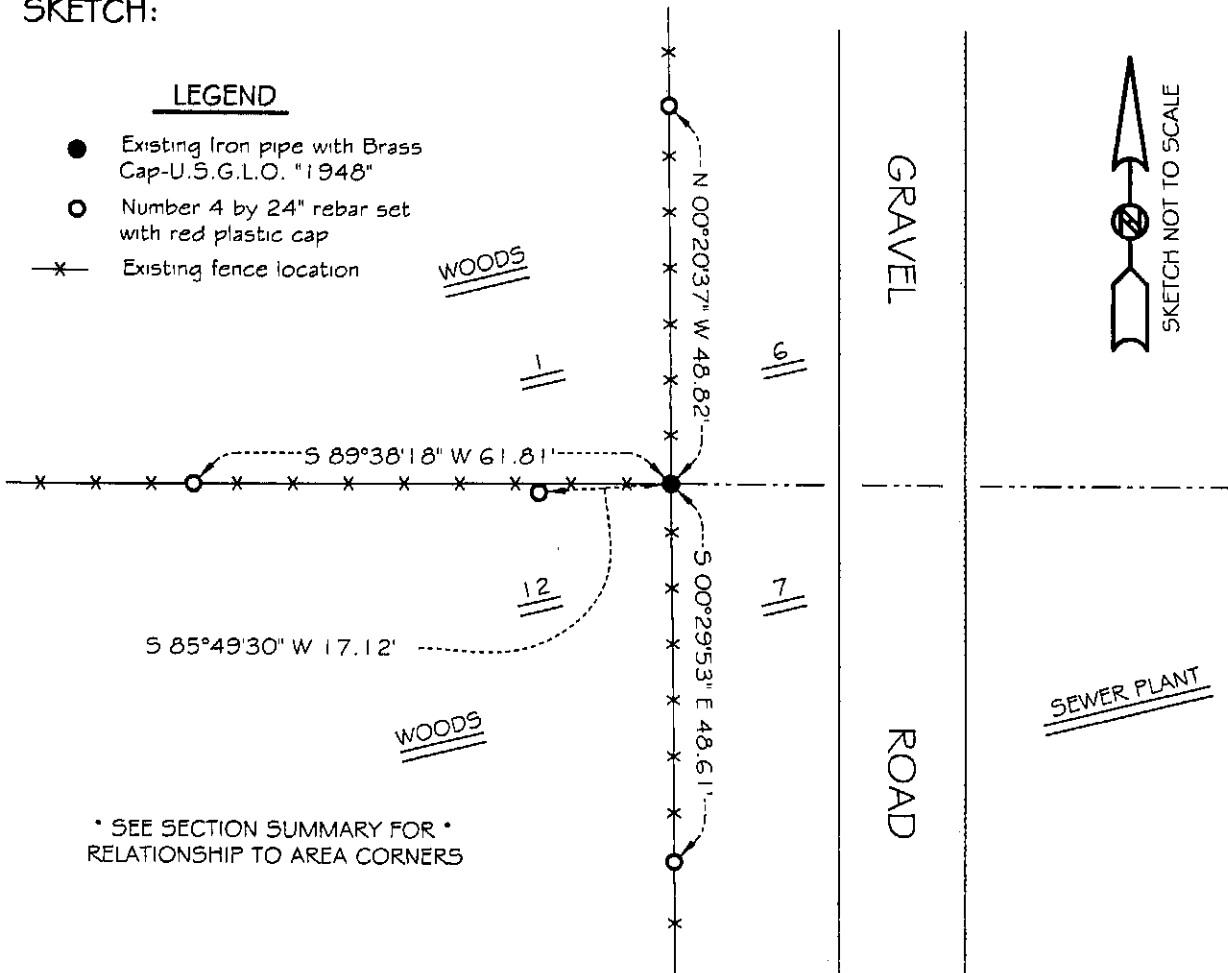
I found the 1" iron pipe and accepted it's location after an E.D.M. & G.P.S. traverse of the area.

DESCRIPTION OF CORNER AND WITNESS MONUMENTS, references and accessories used to perpetuate the original or re-established location of this corner

WITNESS TO THE CORNER LOCATION: SHANE AUSTIN & SHELBY BLINDERT & BOBBY SEDGWICK

SKETCH:

- LEGEND**
- Existing Iron pipe with Brass Cap-U.S.G.L.O. "1948"
 - Number 4 by 24" rebar set with red plastic cap
 - x— Existing fence location



* SEE SECTION SUMMARY FOR *
RELATIONSHIP TO AREA CORNERS