

U.S. PUBLIC LAND SURVEY MONUMENT RECORD - GRANT COUNTY, WI

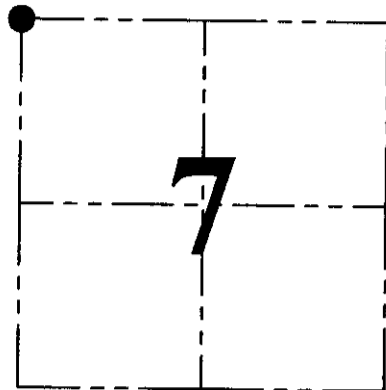
Section 7, Town 5 North Range 1 West, Town of Clifton

CERTIFICATE:

I, Aaron J. Austin, Wisconsin Professional Land Surveyor, do hereby certify that the corner location on this record was determined by me and/or under my direct supervision and that this U.S. Public Land Survey Monument Record is correct and complete to the best of my knowledge and belief.

Dated this 10th day of September, 2015.

Aaron J. Austin
 Wisconsin Professional Land Surveyor
 S-2922
 LANCASTER, WI



● = CORNER LOCATION

HISTORY OF CORNER ESTABLISHMENT:

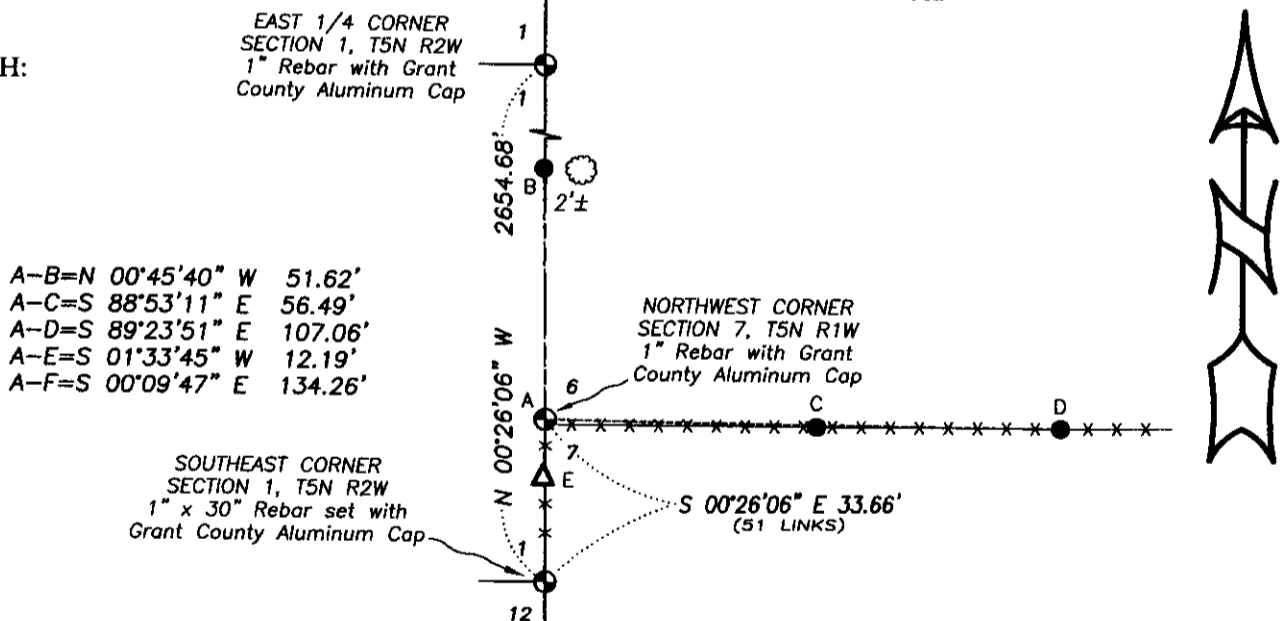
1832-Henry Parke set original corner.
 1889-Herbert Goold tied to the corner on a Survey in Book D, Page 170 and 171.
 No other record was found for this corner.

DESCRIPTION OF CORNER EVIDENCE FOUND:

I reset this corner at the recorded offset from the Southeast corner of Section 1, T5N R2W on the East line of Section 1. This also matched an existing fence corner which the Southeast corner of Section 1 was set from. I set 4 witness corners and verified this location with G.P.S. and E.D.M. methods.

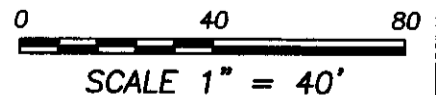
DESCRIPTION OF CORNER AND WITNESS MONUMENTS, references and accessories used to perpetuate the original or re-established location of this corner. Witnesses to corner location Shane Austin.

SKETCH:



LEGEND

- ⊕ Section Corner - as designated
- 1/2" x 12" Rebar set with red plastic "TIE" cap
- △ 1" diameter iron pipe found
- x-x- Approximate existing fence



Austin Engineering LLC
 austinengineeringllc.com
 4211 HWY 81 E, LANCASTER, WI 53813
 PHONE: 608-723-6363 FAX: 608-723-6702

JOB NO: 15s179
 H:CRD\15s179
 H:\TIE\T5NR1W\33

FIELDBOOK: TDSR
 DRAWN BY: AJ AUSTIN
 CREW: SW AUSTIN